



[Go to Product page](#)

Datasheet for ABIN377042

Normal Rabbit Serum

1 Image

Overview

Quantity:	5 mL
Host:	Rabbit
Application:	Flow Cytometry (FACS), Control (Ct)

Product Details

Characteristics:	Normal Rabbit Serum
Purification:	Purification Method: Processed to minimize hemolysis and 0.2 m filtered.

Application Details

Application Notes:	• Applications: Referenced applications include - Block , Control , IHC-PS , IHC-WM , ICC , IP
Comment:	blocking sera, control sera, serum additive in buffers
Restrictions:	For Research Use only

Handling

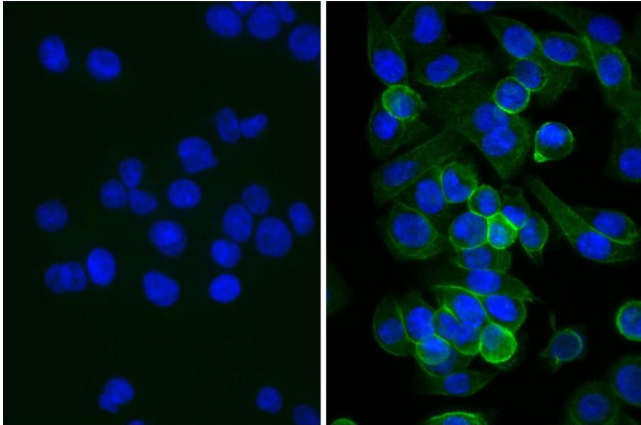
Format:	Liquid
Buffer:	The serum is supplied as 5.0 mL with 0.1 % Sodium azide as a preservative.
Preservative:	Sodium azide
Precaution of Use:	This product contains Sodium azide: a POISONOUS AND HAZARDOUS SUBSTANCE which should be handled by trained staff only.
Handling Advice:	Each reagent is stable for the period shown on the bottle label if stored as directed.

Handling

Storage: 4 °C, -20 °C

Storage Comment: The serum is supplied as 5.0 mL with 0.1% NaN₃ as a preservative. Store at 2-8C or aliquot and store at or below -20C for long- term storage. Reagent is stable for the period shown on the label if stored as directed.

Images



Immunofluorescence

Image 1. Human pancreatic carcinoma cell line MIA PaCa-2 was blocked with Normal Rabbit Serum, and DAPI.