



[Go to Product page](#)

Datasheet for ABIN387739

anti-TMEM104 antibody (AA 158-207)

1 Image

Overview

Quantity:	100 µL
Target:	TMEM104
Binding Specificity:	AA 158-207
Reactivity:	Human, Cow, Guinea Pig, Rabbit, Rat, Bat, Monkey
Host:	Rabbit
Clonality:	Polyclonal
Conjugate:	This TMEM104 antibody is un-conjugated
Application:	Western Blotting (WB)

Product Details

Immunogen:	Synthetic peptide located between aa158-207 of human TMEM104 (Q8NE00-2). Percent identity by BLAST analysis: Human, Chimpanzee, Gorilla, Orangutan, Gibbon, Monkey, Marmoset, Bat, Rabbit, Guinea pig (100%), Elephant, Dog, Horse, Pig (92%), Galago (85%), Panda, Bovine (84%), Rat (76%). Type of Immunogen: Synthetic peptide
Isotype:	IgG
Specificity:	Human TMEM104
Predicted Reactivity:	Percent identity by BLAST analysis: Human, Rabbit (100%) Dog, Horse, Pig (92%) Bovine (84%).
Purification:	Protein A purified

Target Details

Target:	TMEM104
Alternative Name:	TMEM104 (TMEM104 Products)
Background:	Name/Gene ID: TMEM104 Subfamily: Amino acid transporter Family: Transporter Synonyms: TMEM104, Transmembrane protein 104
Gene ID:	54868
UniProt:	Q8NE00

Application Details

Application Notes:	Approved: WB Usage: ELISA titer using peptide based assay: 1:62500. Western Blot: Suggested dilution at 5.0 µg/mL in 5 % skim milk / PBS buffer, and HRP conjugated anti-Rabbit IgG should be diluted in 1:50000 - 100000 as second antibody.
Comment:	Target Species of Antibody: Human
Restrictions:	For Research Use only

Handling

Format:	Lyophilized
Reconstitution:	Distilled Water.
Concentration:	Lot specific
Buffer:	Lyophilized from PBS with 2 % sucrose
Handling Advice:	Avoid repeat freeze-thaw cycles.
Storage:	4 °C,-20 °C
Storage Comment:	Long term: -20°C, the use of 50% glycerol is recommended if storing aliquots in -20°C for long term use (up to 1 year) Short term (less than 1 week): 4°C. Avoid freeze-thaw cycles.

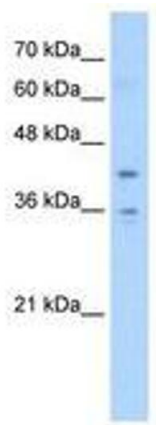


Image 1.