

Datasheet for ABIN387765  
**anti-FXYD1 antibody (pSer68)**



[Go to Product page](#)

1 Image

Overview

Quantity:	400 µL
Target:	FXYD1
Binding Specificity:	pSer68
Reactivity:	Mouse
Host:	Mouse
Clonality:	Monoclonal
Conjugate:	This FXYD1 antibody is un-conjugated
Application:	Western Blotting (WB)

Product Details

Immunogen:	This PLM Antibody is generated from mice immunized with a KLH conjugated synthetic phosphopeptide corresponding to amino acid residues surrounding S68 of mouse PLM.
Clone:	41AT858-235
Isotype:	IgG1
Purification:	This antibody is purified through a protein G column, followed by dialysis against PBS.

Target Details

Target:	FXYD1
Alternative Name:	PLM ( <a href="#">FXYD1 Products</a> )
Background:	This gene encodes a member of the FXYD family of small membrane proteins that share a 35-

## Target Details

---

amino acid signature sequence domain, beginning with the sequence PFXVD and containing 7 invariant and 6 highly conserved amino acids. The protein encoded by this gene is a plasma membrane substrate for several kinases, including protein kinase A, protein kinase C, NIMA kinase, and myotonic dystrophy kinase. It is thought to form an ion channel or regulate ion channel activity and act as an accessory protein of Na,K-ATPase. Alternatively spliced transcript variants have been described.

---

Molecular Weight: 10323

---

Gene ID: 56188

---

NCBI Accession: [NP\\_062376](#), [NP\\_443717](#), [NP\\_443718](#), [NP\\_919302](#)

---

UniProt: [Q9Z239](#)

## Application Details

---

---

Application Notes: WB: 1:100~500

---

Restrictions: For Research Use only

## Handling

---

---

Format: Liquid

---

Buffer: Purified polyclonal antibody supplied in PBS with 0.09 % (W/V) sodium azide.

---

Preservative: Sodium azide

---

Precaution of Use: This product contains Sodium azide: a POISONOUS AND HAZARDOUS SUBSTANCE which should be handled by trained staff only.

---

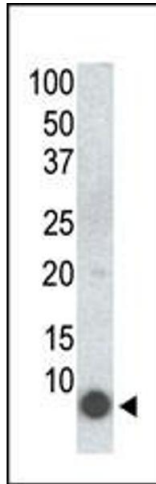
Storage: 4 °C, -20 °C

---

Storage Comment: Maintain refrigerated at 2-8 °C for up to 6 months. For long term storage store at -20 °C in small aliquots to prevent freeze-thaw cycles.

---

Expiry Date: 6 months



### Western Blotting

**Image 1.** Western blot analysis of anti-PLM Mab (ABIN387765 and ABIN2838013) in 293 cells transfected with a plasmid encoding PLM.