

## Datasheet for ABIN387790

**anti-LIN28A antibody**

## 3 Images

[Go to Product page](#)

## Overview

Quantity:	400 µL
Target:	LIN28A
Reactivity:	Human
Host:	Mouse
Clonality:	Monoclonal
Conjugate:	This LIN28A antibody is un-conjugated
Application:	Western Blotting (WB), Immunofluorescence (IF), Immunohistochemistry (Paraffin-embedded Sections) (IHC (p))

## Product Details

Immunogen:	LIN28A recombinant protein is used to produce this monoclonal antibody.
Clone:	55CT58-12-1
Isotype:	IgG1 kappa
Purification:	This antibody is prepared by Saturated Ammonium Sulfate (SAS) precipitation followed by dialysis against PBS.

## Target Details

Target:	LIN28A
Alternative Name:	LIN28A ( <a href="#">LIN28A Products</a> )
Molecular Weight:	22743

## Target Details

Gene ID:	79727
NCBI Accession:	<a href="#">NP_078950</a>
UniProt:	<a href="#">Q9H9Z2</a>
Pathways:	<a href="#">Stem Cell Maintenance</a>

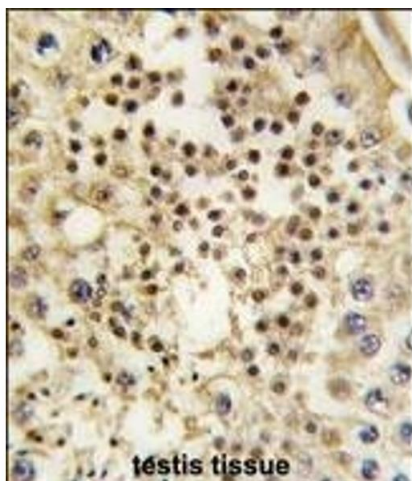
## Application Details

Application Notes:	IF: 1:10~50. WB: 1:200~2000. IHC-P: 1:50~200
Restrictions:	For Research Use only

## Handling

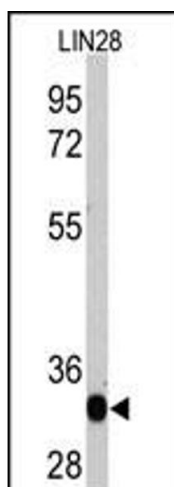
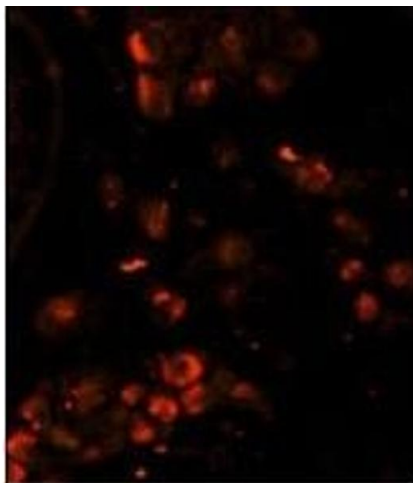
Format:	Liquid
Buffer:	Purified polyclonal antibody supplied in PBS with 0.09 % (W/V) sodium azide.
Preservative:	Sodium azide
Precaution of Use:	This product contains Sodium azide: a POISONOUS AND HAZARDOUS SUBSTANCE which should be handled by trained staff only.
Storage:	4 °C, -20 °C
Storage Comment:	Maintain refrigerated at 2-8 °C for up to 6 months. For long term storage store at -20 °C in small aliquots to prevent freeze-thaw cycles.
Expiry Date:	6 months

## Images



### Immunohistochemistry (Paraffin-embedded Sections)

**Image 1.** Formalin-fixed and paraffin-embedded human testis tissue reacted with LIN28A Monoclonal Antibody (ABIN387790 and ABIN2838026), which was peroxidase-conjugated to the secondary antibody, followed by DAB staining. This data demonstrates the use of this antibody for immunohistochemistry, clinical relevance has not been evaluated.



### Immunofluorescence

**Image 2.** Immunofluorescence analysis of LIN28A Monoclonal Antibody with paraffin-embedded human testis tissue. 0.025 mg/mL primary antibody was followed by PE-conjugated goat anti-mouse IgG (whole molecule). PE emits orange fluorescence.

### Western Blotting

**Image 3.** Western blot analysis of LIN28 recombinant protein by anti-LIN28A Monoclonal Antibody (ABIN387790 and ABIN2838026). LIN28 (arrow) was detected using the purified Mab.