

Datasheet for ABIN387792
anti-MAP1LC3A antibody[Go to Product page](#)

1 Image

17 Publications

Overview

Quantity:	200 µL
Target:	MAP1LC3A
Reactivity:	Human, Mouse, Rat
Host:	Mouse
Clonality:	Monoclonal
Conjugate:	This MAP1LC3A antibody is un-conjugated
Application:	Western Blotting (WB)

Product Details

Immunogen:	This LC3 antibody is generated from mouse immunized with a full length recombinant protein of human LC3 (APG8).
Clone:	166AT1234
Isotype:	IgG1 kappa
Purification:	This antibody is purified through a protein G column, followed by dialysis against PBS.

Target Details

Target:	MAP1LC3A
Alternative Name:	LC3 (MAP1LC3A Products)
Background:	MAP1A and MAP1B are microtubule-associated proteins which mediate the physical interactions between microtubules and components of the cytoskeleton. MAP1A and MAP1B each consist of a heavy chain subunit and multiple light chain subunits. The protein encoded by

Target Details

this gene is one of the light chain subunits and can associate with either MAP1A or MAP1B.
Two transcript variants encoding different isoforms have been found for this gene.

Gene ID:	84557
NCBI Accession:	NP_115903 , NP_852610
UniProt:	Q9H492 , Q9GZQ8
Pathways:	Autophagy

Application Details

Application Notes:	WB: 1:8000
Restrictions:	For Research Use only

Handling

Format:	Liquid
Buffer:	Purified monoclonal antibody supplied in PBS with 0.09 % (W/V) sodium azide.
Preservative:	Sodium azide
Precaution of Use:	This product contains Sodium azide: a POISONOUS AND HAZARDOUS SUBSTANCE which should be handled by trained staff only.
Handling Advice:	Avoid freeze-thaw cycles.
Storage:	4 °C, -20 °C
Storage Comment:	Maintain refrigerated at 2-8 °C for up to 6 months. For long term storage store at -20 °C in small aliquots.
Expiry Date:	6 months

Publications

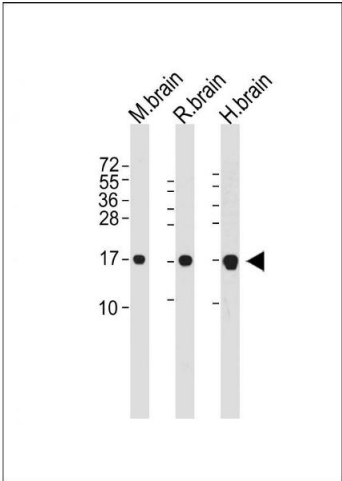
Product cited in:	Wu, Li, Fang, Yi, Chen, Long, Gao, Wei, Chen: "Investigation of synergistic mechanism and identification of interaction site of aldose reductase with the combination of gigantol and syringic acid for prevention of diabetic cataract." in: BMC complementary and alternative medicine , Vol. 16, Issue 1, pp. 286, (2017) (PubMed).
	Guo, Wang, Liu, Myatt, Sun: "Induction of PGF2? synthesis by cortisol through GR dependent

Publications

induction of CBR1 in human amnion fibroblasts." in: **Endocrinology**, Vol. 155, Issue 8, pp. 3017-24, (2014) ([PubMed](#)).

There are more publications referencing this product on: [Product page](#)

Images



Western Blotting

Image 1. All lanes : Anti-P1LC3A Antibody at dilution Lane 1: Mouse brain whole cell lysate Lane 2: Rat brain whole cell lysate Lane 3: Hun brain whole cell lysate Lysates/proteins at 20 µg per lane. Secondary Goat Anti-mouse IgG, (H+L), Peroxidase conjugated at 1/10000 dilution. Predicted band size : 14 kDa Blocking/Dilution buffer: 5 % NFDm/TBST.