

Datasheet for ABIN387800

anti-KLF4 antibody[Go to Product page](#)

3 Images

2 Publications

Overview

Quantity:	200 µL
Target:	KLF4
Reactivity:	Human, Mouse
Host:	Mouse
Clonality:	Monoclonal
Conjugate:	This KLF4 antibody is un-conjugated
Application:	Western Blotting (WB), Immunofluorescence (IF), Flow Cytometry (FACS)

Product Details

Immunogen:	KLF4 recombinant protein is used to produce this monoclonal antibody.
Clone:	56CT5-1-6
Isotype:	IgG2b kappa
Purification:	This antibody is purified through a protein G column, followed by dialysis against PBS.

Target Details

Target:	KLF4
Alternative Name:	KLF4 (KLF4 Products)
Molecular Weight:	54671
Gene ID:	9314
NCBI Accession:	NP_004226

Target Details

UniProt: [O43474](#)

Pathways: [Peptide Hormone Metabolism](#), [Stem Cell Maintenance](#)

Application Details

Application Notes: IF: 1:10~50. WB: 1:4000. FC: 1:10~50

Restrictions: For Research Use only

Handling

Format: Liquid

Buffer: Purified monoclonal antibody supplied in PBS with 0.09 % (W/V) sodium azide.

Preservative: Sodium azide

Precaution of Use: This product contains Sodium azide: a POISONOUS AND HAZARDOUS SUBSTANCE which should be handled by trained staff only.

Handling Advice: Avoid freeze-thaw cycles.

Storage: 4 °C, -20 °C

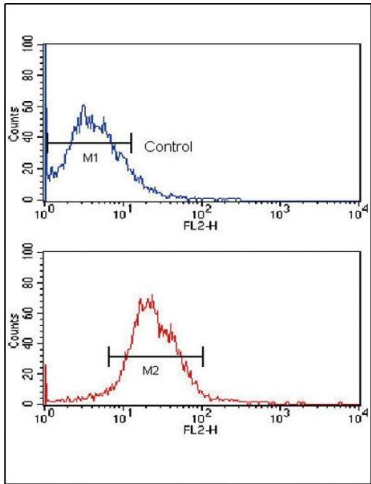
Storage Comment: Maintain refrigerated at 2-8 °C for up to 6 months. For long term storage store at -20 °C in small aliquots.

Expiry Date: 6 months

Publications

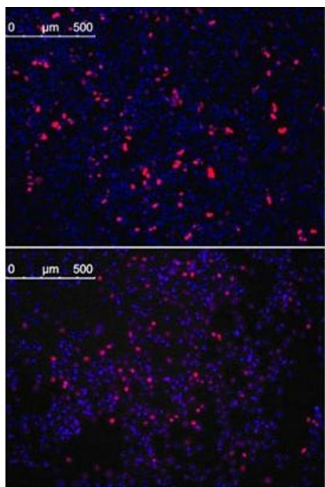
Product cited in: Ball, Oppel, Ehrenberg, Dubash, Dieter, Hoffmann, Abel, Herbst, Koch, Werner, Bergmann, Ishaque, Schmidt, von Kalle, Scholl, Fröhling, Brors, Weichert, Weitz, Glimm: "Succession of transiently active tumor-initiating cell clones in human pancreatic cancer xenografts." in: **EMBO molecular medicine**, Vol. 9, Issue 7, pp. 918-932, (2018) ([PubMed](#)).

Wei, Wang, Kanai, Jia, Le, Li, Wang, Xie: "KLF4? up-regulation promotes cell cycle progression and reduces survival time of patients with pancreatic cancer." in: **Gastroenterology**, Vol. 139, Issue 6, pp. 2135-45, (2010) ([PubMed](#)).



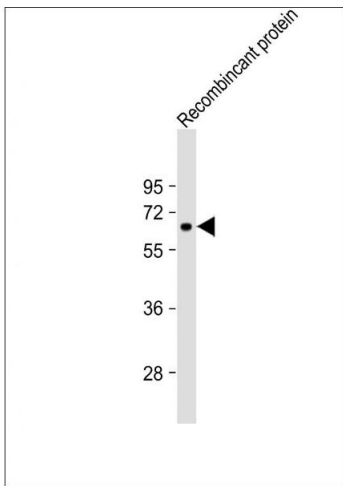
Flow Cytometry

Image 1. Flow cytometric analysis of MCF-7 cells using KLF4 Monoclonal Antibody (bottom histogram) compared to a negative control (top histogram). PE-conjugated goat-anti-mouse secondary antibodies were used for the analysis.



Immunofluorescence

Image 2. Immunofluorescence analysis of KLF4 antibody , (ABIN387800 and ABIN2843896) (5 μg/mL). HeLa cells transfected with pMX constructs of human KLF4 (top) and NIH3T3 cells transfected with pMX constructs of mouse KLF4 (bottom) were analyzed at approximately 62 hours after transfection.



Western Blotting

Image 3. Anti-KLF4 Antibody at 1:4000 dilution + Recombinant protein lysate Lysates/proteins at 20 μg per lane. Secondary Goat Anti-mouse IgG, (H+L), Peroxidase conjugated at 1/10000 dilution. Predicted band size : 60 kDa Blocking/Dilution buffer: 5 % NFDM/TBST.