

Datasheet for ABIN387812

anti-EPH Receptor B2 antibody

3 Images



[Go to Product page](#)

Overview

Quantity:	200 µL
Target:	EPH Receptor B2 (EPHB2)
Reactivity:	Human
Host:	Mouse
Clonality:	Monoclonal
Conjugate:	This EPH Receptor B2 antibody is un-conjugated
Application:	Western Blotting (WB), Flow Cytometry (FACS), Immunohistochemistry (Paraffin-embedded Sections) (IHC (p))

Product Details

Immunogen:	Purified His-tagged EPHB2 protein(Fragment, between amino acids 127~425) was used to produce this monoclonal antibody.
Clone:	48CT12-6-4
Isotype:	IgG1 kappa
Purification:	This antibody is purified through a protein G column, followed by dialysis against PBS.

Target Details

Target:	EPH Receptor B2 (EPHB2)
Alternative Name:	EPHB2 (EPHB2 Products)
Background:	Ephrin receptors and their ligands, the ephrins, mediate numerous developmental processes, particularly in the nervous system. Based on their structures and sequence relationships,

Target Details

ephrins are divided into the ephrin-A (EFNA) class, which are anchored to the membrane by a glycosylphosphatidylinositol linkage, and the ephrin-B (EFNB) class, which are transmembrane proteins. The Eph family of receptors are divided into 2 groups based on the similarity of their extracellular domain sequences and their affinities for binding ephrin-A and ephrin-B ligands. Ephrin receptors make up the largest subgroup of the receptor tyrosine kinase (RTK) family. The protein encoded by this gene is a receptor for ephrin-B family members.

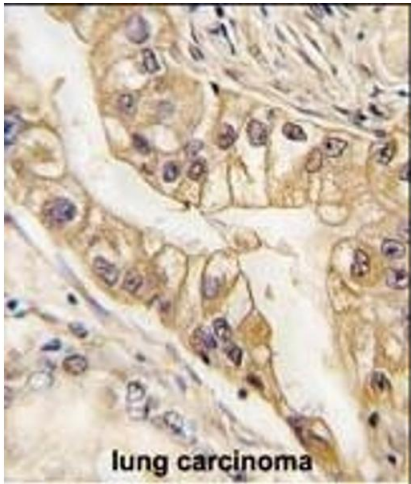
Molecular Weight:	117493
NCBI Accession:	NP_004433 , NP_059145
UniProt:	P29323
Pathways:	RTK Signaling , Regulation of long-term Neuronal Synaptic Plasticity , S100 Proteins

Application Details

Application Notes:	WB: 1:1000. IHC: 1:400. IHC-P: 1:200. FC: 1:10~50
Restrictions:	For Research Use only

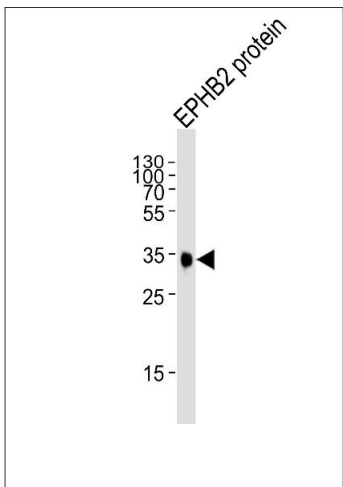
Handling

Format:	Liquid
Buffer:	Purified monoclonal antibody supplied in PBS with 0.09 % (W/V) sodium azide.
Preservative:	Sodium azide
Precaution of Use:	This product contains Sodium azide: a POISONOUS AND HAZARDOUS SUBSTANCE which should be handled by trained staff only.
Storage:	4 °C, -20 °C
Storage Comment:	Maintain refrigerated at 2-8 °C for up to 6 months. For long term storage store at -20 °C in small aliquots to prevent freeze-thaw cycles.
Expiry Date:	6 months



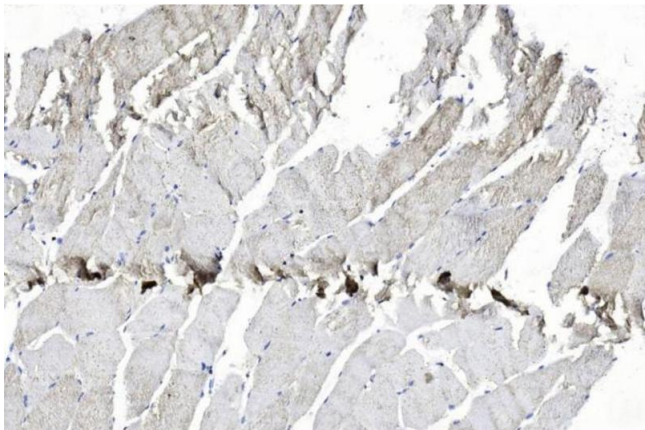
Immunohistochemistry (Paraffin-embedded Sections)

Image 1. Formalin-fixed and paraffin-embedded human lung carcinoma tissue reacted with EPHB2 Monoclonal Antibody (ABIN387812 and ABIN2843903) , which was peroxidase-conjugated to the secondary antibody, followed by DAB staining. This data demonstrates the use of this antibody for immunohistochemistry, clinical relevance has not been evaluated.



Western Blotting

Image 2. Western blot analysis of lysate from EPHB2 protein, using EphB2 Antibody (ABIN387812 and ABIN2843903). (ABIN387812 and ABIN2843903) was diluted at 1:1000. A goat anti-mouse IgG H&L(HRP) at 1:3000 dilution was used as the secondary antibody. Lysate at 35 µg.



Immunohistochemistry

Image 3. Immunohistochemical analysis of paraffin-embedded Human Skeletal muscle section using Pink1 am7623b. am7623b was diluted at 1:400 dilution. A undiluted biotinylated goat polyvalent antibody was used as the secondary, followed by DAB staining.