

Datasheet for ABIN387854  
**anti-EHMT1 antibody (N-Term)**[Go to Product page](#)

## 1 Image

## Overview

Quantity:	400 µL
Target:	EHMT1
Binding Specificity:	AA 203-233, N-Term
Reactivity:	Human
Host:	Rabbit
Clonality:	Polyclonal
Conjugate:	This EHMT1 antibody is un-conjugated
Application:	Western Blotting (WB)

## Product Details

Immunogen:	This EHMT1 antibody is generated from rabbits immunized with a KLH conjugated synthetic peptide between 203-233 amino acids from the N-terminal region of human EHMT1.
Clone:	RB13017
Isotype:	Ig Fraction
Purification:	This antibody is prepared by Saturated Ammonium Sulfate (SAS) precipitation followed by dialysis against PBS.

## Target Details

Target:	EHMT1
Alternative Name:	EHMT1 ( <a href="#">EHMT1 Products</a> )

## Target Details

**Background:** EHMT1, also known as EUHMTASE1, is a histone methyltransferase. This protein methylates 'Lys-9' of histone H3 in vitro. H3 'Lys-9' methylation represents a specific tag for epigenetic transcriptional repression by recruiting HP1 proteins to methylated histones. EHMT1 is Probably targeted to histone H3 by different DNA-binding proteins like E2F6, MGA, MAX and/or DP1. During G0 phase, it probably contributes to silencing of MYC- and E2F-responsive genes, suggesting a role in the G0/G1 transition of the cell cycle.

**Molecular Weight:** 141466

**Gene ID:** 79813

**NCBI Accession:** [NP\\_001138999](#), [NP\\_079033](#)

**UniProt:** [Q9H9B1](#)

## Application Details

**Application Notes:** WB: 1:1000

**Restrictions:** For Research Use only

## Handling

**Format:** Liquid

**Buffer:** Purified polyclonal antibody supplied in PBS with 0.09 % (W/V) sodium azide.

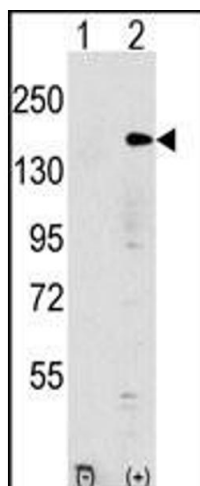
**Preservative:** Sodium azide

**Precaution of Use:** This product contains Sodium azide: a POISONOUS AND HAZARDOUS SUBSTANCE which should be handled by trained staff only.

**Storage:** 4 °C, -20 °C

**Storage Comment:** Maintain refrigerated at 2-8 °C for up to 6 months. For long term storage store at -20 °C in small aliquots to prevent freeze-thaw cycles.

**Expiry Date:** 6 months



#### Western Blotting

**Image 1.** Western blot analysis of EHMT1 (arrow) using rabbit polyclonal EHMT1 Antibody (N-term) (ABIN387854 and ABIN2844016). 293 cell lysates (2  $\mu$ g/lane) either nontransfected (Lane 1) or transiently transfected with the EHMT1 gene (Lane 2) (Origene Technologies).