



[Go to Product page](#)

Datasheet for ABIN387855
anti-EHMT1 antibody (C-Term)

1 Image

Overview

Quantity:	400 µL
Target:	EHMT1
Binding Specificity:	AA 1145-1174, C-Term
Reactivity:	Human
Host:	Rabbit
Clonality:	Polyclonal
Conjugate:	This EHMT1 antibody is un-conjugated
Application:	Western Blotting (WB)

Product Details

Immunogen:	This EHMT1 antibody is generated from rabbits immunized with a KLH conjugated synthetic peptide between 1145-1174 amino acids from the C-terminal region of human EHMT1.
Clone:	RB13019
Isotype:	Ig Fraction
Predicted Reactivity:	M
Purification:	This antibody is prepared by Saturated Ammonium Sulfate (SAS) precipitation followed by dialysis against PBS.

Target Details

Target:	EHMT1
---------	-------

Target Details

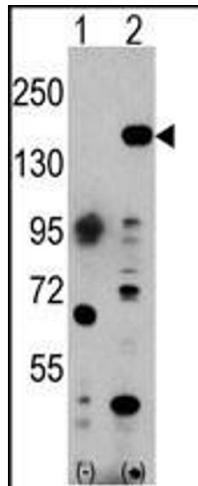
Alternative Name:	EHMT1 (EHMT1 Products)
Background:	EHMT1, also known as EUHMTASE1, is a histone methyltransferase. This protein methylates 'Lys-9' of histone H3 in vitro. H3 'Lys-9' methylation represents a specific tag for epigenetic transcriptional repression by recruiting HP1 proteins to methylated histones. EHMT1 is Probably targeted to histone H3 by different DNA-binding proteins like E2F6, MGA, MAX and/or DP1. During G0 phase, it probably contributes to silencing of MYC- and E2F-responsive genes, suggesting a role in the G0/G1 transition of the cell cycle.
Molecular Weight:	141466
Gene ID:	79813
NCBI Accession:	NP_001138999 , NP_079033
UniProt:	Q9H9B1

Application Details

Application Notes:	WB: 1:1000
Restrictions:	For Research Use only

Handling

Format:	Liquid
Buffer:	Purified polyclonal antibody supplied in PBS with 0.09 % (W/V) sodium azide.
Preservative:	Sodium azide
Precaution of Use:	This product contains Sodium azide: a POISONOUS AND HAZARDOUS SUBSTANCE which should be handled by trained staff only.
Storage:	4 °C,-20 °C
Storage Comment:	Maintain refrigerated at 2-8 °C for up to 6 months. For long term storage store at -20 °C in small aliquots to prevent freeze-thaw cycles.
Expiry Date:	6 months



Western Blotting

Image 1. Western blot analysis of EHMT1 (arrow) using rabbit polyclonal EHMT1 Antibody (C-term) (ABIN387855 and ABIN2844017). 293 cell lysates (2 μ g/lane) either nontransfected (Lane 1) or transiently transfected with the EHMT1 gene (Lane 2) (Origene Technologies).