

Datasheet for ABIN387909
anti-UBA3 antibody (C-Term)



[Go to Product page](#)

4 Images

Overview

Quantity:	400 µL
Target:	UBA3
Binding Specificity:	AA 415-445, C-Term
Reactivity:	Human, Mouse
Host:	Rabbit
Clonality:	Polyclonal
Conjugate:	This UBA3 antibody is un-conjugated
Application:	Western Blotting (WB), Immunohistochemistry (Paraffin-embedded Sections) (IHC (p))

Product Details

Immunogen:	This UBE1C antibody is generated from rabbits immunized with a KLH conjugated synthetic peptide between 415-445 amino acids from the C-terminal region of human UBE1C.
Clone:	RB2803
Isotype:	Ig Fraction
Predicted Reactivity:	Zf, Rat
Purification:	This antibody is purified through a protein A column, followed by peptide affinity purification.

Target Details

Target:	UBA3
Alternative Name:	UBE1C (UBA3 Products)

Target Details

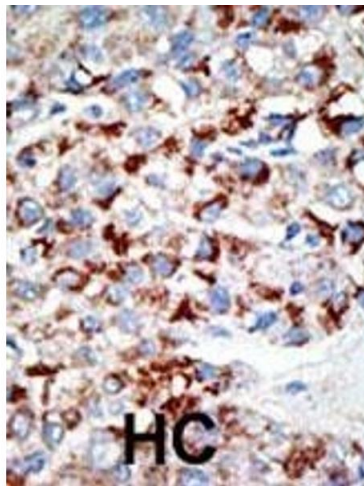
Background:	The modification of proteins with ubiquitin is an important cellular mechanism for targeting abnormal or short-lived proteins for degradation. Ubiquitination involves at least three classes of enzymes: ubiquitin-activating enzymes, or E1s, ubiquitin-conjugating enzymes, or E2s, and ubiquitin-protein ligases, or E3s. This gene encodes a member of the E1 ubiquitin-activating enzyme family. The encoded enzyme associates with AppBp1, an amyloid beta precursor protein binding protein, to form a heterodimer, and then the enzyme complex activates NEDD8, a ubiquitin-like protein, which regulates cell division, signaling and embryogenesis. Multiple alternatively spliced transcript variants encoding distinct isoforms have been found for this gene.
Molecular Weight:	51852
Gene ID:	9039
NCBI Accession:	NP_003959 , NP_937838
UniProt:	Q8TBC4

Application Details

Application Notes:	WB: 1:1000. WB: 1:1000. WB: 1:1000. IHC-P: 1:50~100
Restrictions:	For Research Use only

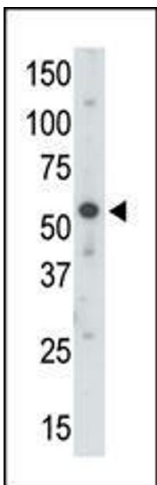
Handling

Format:	Liquid
Buffer:	Purified polyclonal antibody supplied in PBS with 0.09 % (W/V) sodium azide.
Preservative:	Sodium azide
Precaution of Use:	This product contains Sodium azide: a POISONOUS AND HAZARDOUS SUBSTANCE which should be handled by trained staff only.
Storage:	4 °C,-20 °C
Storage Comment:	Maintain refrigerated at 2-8 °C for up to 6 months. For long term storage store at -20 °C in small aliquots to prevent freeze-thaw cycles.
Expiry Date:	6 months



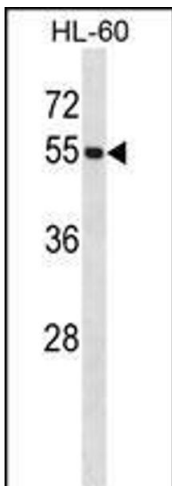
Immunohistochemistry (Paraffin-embedded Sections)

Image 1. Formalin-fixed and paraffin-embedded human cancer tissue reacted with the primary antibody, which was peroxidase-conjugated to the secondary antibody, followed by DAB staining. This data demonstrates the use of this antibody for immunohistochemistry, clinical relevance has not been evaluated. BC = breast carcinoma, HC = hepatocarcinoma.



Western Blotting

Image 2. The anti-UBE1 C-term Pab (ABIN387909 and ABIN2844296) is used in Western blot to detect UBE1 in mouse brain tissue lysate.



Western Blotting

Image 3. UBE1C Antibody (ABIN387909 and ABIN2844296) western blot analysis in HL-60 cell line lysates (35 μ g/lane). This demonstrates the UBE1C antibody detected the UBE1C protein (arrow).

Please check the [product details page](#) for more images. Overall 4 images are available for ABIN387909.