

Datasheet for ABIN387924  
**anti-SETDB1 antibody (C-Term)**[Go to Product page](#)

## 2 Images

## Overview

Quantity:	400 µL
Target:	SETDB1
Binding Specificity:	AA 1193-1225, C-Term
Reactivity:	Human
Host:	Rabbit
Clonality:	Polyclonal
Conjugate:	This SETDB1 antibody is un-conjugated
Application:	Western Blotting (WB)

## Product Details

Immunogen:	This SETDB1 antibody is generated from rabbits immunized with a KLH conjugated synthetic peptide between 1193-1225 amino acids from the C-terminal region of human SETDB1.
Clone:	RB5748
Isotype:	Ig Fraction
Predicted Reactivity:	M, X, Zf
Purification:	This antibody is prepared by Saturated Ammonium Sulfate (SAS) precipitation followed by dialysis against PBS.

## Target Details

Target:	SETDB1
---------	--------

## Target Details

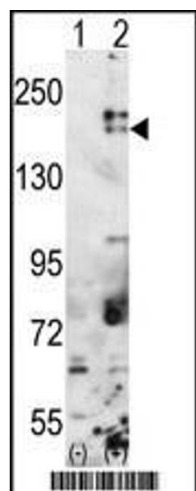
Alternative Name:	SETDB1 ( <a href="#">SETDB1 Products</a> )
Background:	The SET domain is a highly conserved, approximately 150-amino acid motif implicated in the modulation of chromatin structure. It was originally identified as part of a larger conserved region present in the Drosophila Trithorax protein and was subsequently identified in the Drosophila Su(var)3-9 and 'Enhancer of zeste' proteins, from which the acronym SET is derived. Studies have suggested that the SET domain may be a signature of proteins that modulate transcriptionally active or repressed chromatin states through chromatin remodeling activities.
Molecular Weight:	143157
Gene ID:	9869
NCBI Accession:	<a href="#">NP_001138887</a> , <a href="#">NP_001230420</a> , <a href="#">NP_036564</a>
UniProt:	<a href="#">Q15047</a>

## Application Details

Application Notes:	WB: 1:1000. WB: 1:1000
Restrictions:	For Research Use only

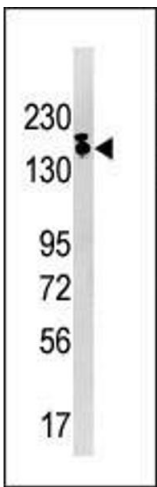
## Handling

Format:	Liquid
Buffer:	Purified polyclonal antibody supplied in PBS with 0.09 % (W/V) sodium azide.
Preservative:	Sodium azide
Precaution of Use:	This product contains Sodium azide: a POISONOUS AND HAZARDOUS SUBSTANCE which should be handled by trained staff only.
Storage:	4 °C,-20 °C
Storage Comment:	Maintain refrigerated at 2-8 °C for up to 6 months. For long term storage store at -20 °C in small aliquots to prevent freeze-thaw cycles.
Expiry Date:	6 months



#### Western Blotting

**Image 1.** Western blot analysis of SETDB1 (arrow) using rabbit polyclonal SETDB1 Antibody (C-term) (ABIN387924 and ABIN2844389). 293 cell lysates (2 µg/lane) either nontransfected (Lane 1) or transiently transfected with the SETDB1 gene (Lane 2) (Origene Technologies).



#### Western Blotting

**Image 2.** Western blot analysis of anti-SETDB1 Pab (ABIN387924 and ABIN2844389) in Ramos cell line lysate (35 µg/lane). SETDB1 (arrow) was detected using the purified Pab.