



[Go to Product page](#)

Datasheet for ABIN387926

anti-EHMT1 antibody (AA 979-1010)

1 Image

Overview

Quantity:	400 µL
Target:	EHMT1
Binding Specificity:	AA 979-1010
Reactivity:	Human
Host:	Rabbit
Clonality:	Polyclonal
Conjugate:	This EHMT1 antibody is un-conjugated
Application:	Western Blotting (WB)

Product Details

Immunogen:	This EHMT1 (EUHMTASE1) antibody is generated from rabbits immunized with a KLH conjugated synthetic peptide between 979-1010 amino acids from the Central region of human EHMT1 (EUHMTASE1).
Clone:	RB5751
Isotype:	Ig Fraction
Purification:	This antibody is prepared by Saturated Ammonium Sulfate (SAS) precipitation followed by dialysis against PBS.

Target Details

Target:	EHMT1
Alternative Name:	EHMT1 (EUHMTASE1) (EHMT1 Products)

Target Details

Background: EHMT1, also known as EUHMTASE1, is a histone methyltransferase. This protein methylates 'Lys-9' of histone H3 in vitro. H3 'Lys-9' methylation represents a specific tag for epigenetic transcriptional repression by recruiting HP1 proteins to methylated histones. EHMT1 is Probably targeted to histone H3 by different DNA-binding proteins like E2F6, MGA, MAX and/or DP1. During G0 phase, it probably contributes to silencing of MYC- and E2F-responsive genes, suggesting a role in the G0/G1 transition of the cell cycle.

Molecular Weight: 141466

Gene ID: 79813

NCBI Accession: [NP_001138999](#), [NP_079033](#)

UniProt: [Q9H9B1](#)

Application Details

Application Notes: WB: 1:1000

Restrictions: For Research Use only

Handling

Format: Liquid

Buffer: Purified polyclonal antibody supplied in PBS with 0.09 % (W/V) sodium azide.

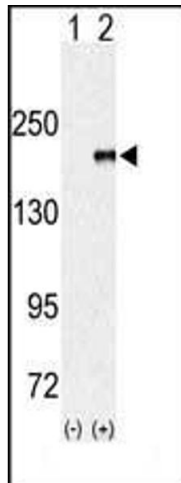
Preservative: Sodium azide

Precaution of Use: This product contains Sodium azide: a POISONOUS AND HAZARDOUS SUBSTANCE which should be handled by trained staff only.

Storage: 4 °C, -20 °C

Storage Comment: Maintain refrigerated at 2-8 °C for up to 6 months. For long term storage store at -20 °C in small aliquots to prevent freeze-thaw cycles.

Expiry Date: 6 months



Western Blotting

Image 1. Western blot analysis of EUHMTASE (arrow) using rabbit polyclonal EHMT1 (EUHMTASE1) Antibody (Center) (ABIN387926 and ABIN2844398). 293 cell lysates (2 µg/lane) either nontransfected (Lane 1) or transiently transfected with the EUHMTASE gene (Lane 2) (Origene Technologies).