

Datasheet for ABIN387983
anti-ISG15 antibody (N-Term)



[Go to Product page](#)

4 Images

5 Publications

Overview

Quantity:	400 µL
Target:	ISG15
Binding Specificity:	AA 31-61, N-Term
Reactivity:	Human
Host:	Rabbit
Clonality:	Polyclonal
Conjugate:	This ISG15 antibody is un-conjugated
Application:	Western Blotting (WB), Immunohistochemistry (Paraffin-embedded Sections) (IHC (p))

Product Details

Immunogen:	This ISG15 antibody is generated from rabbits immunized with a KLH conjugated synthetic peptide between 31-61 amino acids from the N-terminal region of human ISG15.
Clone:	RB02791
Isotype:	Ig Fraction
Purification:	This antibody is purified through a protein A column, followed by peptide affinity purification.

Target Details

Target:	ISG15
Alternative Name:	ISG15 (ISG15 Products)
Background:	ISG15 is secreted from monocytes in response to type I interferons and causes natural killer

Target Details

(NK)-cell proliferation and an augmentation of non-MCH (major histocompatibility complex)-restricted cytotoxicity. Synthesis is stimulated by IFN-alpha or IFN-beta or IFN-omega , but not IFN-gamma . ISG15 expression is also induced by overexpression of interferon regulatory factors that participate in transcriptional regulation of IFN genes, and by influenza B virus. ISG15 is secreted also by cell lines of monocyte, T-lymphocyte, B-lymphocyte, human fibroblasts, and epithelial origins. The induction of terminal differentiation in human melanoma cells is associated with alterations in ISG15 expression. Enhancement of NK cell proliferation, augmentation of non-major histocompatibility complex-restricted cytotoxicity, and induction of IFN-gamma from T cells identify ISG15 as a member of the cytokine cascade and suggest that it may be responsible for amplifying and directing some of the immunomodulatory effects of IFN-alpha or IFN-beta. ISG15 has also been shown to function intracellularly as a ubiquitin homolog.

Molecular Weight: 17888

Gene ID: 9636

NCBI Accession: [NP_005092](#)

UniProt: [P05161](#)

Application Details

Application Notes: WB: 1:1000. WB: 1:1000. WB: 1:1000. IHC-P: 1:50~100

Restrictions: For Research Use only

Handling

Format: Liquid

Buffer: Purified polyclonal antibody supplied in PBS with 0.09 % (W/V) sodium azide.

Preservative: Sodium azide

Precaution of Use: This product contains Sodium azide: a POISONOUS AND HAZARDOUS SUBSTANCE which should be handled by trained staff only.

Storage: 4 °C,-20 °C

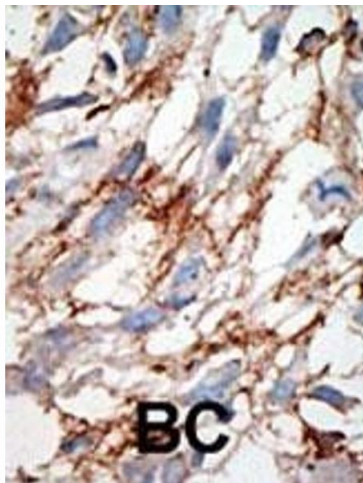
Storage Comment: Maintain refrigerated at 2-8 °C for up to 6 months. For long term storage store at -20 °C in small aliquots to prevent freeze-thaw cycles.

Expiry Date: 6 months

Publications

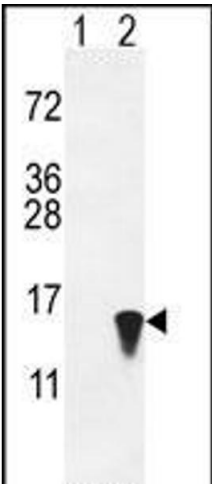
- Product cited in: Cheriyamundath, Basu, Haase, Doernberg, Gavert, Brabletz, Ben-Zeev: "ISG15 induction is required during L1-mediated colon cancer progression and metastasis." in: **Oncotarget**, Vol. 10, Issue 67, pp. 7122-7131, (2019) ([PubMed](#)).
- Speer, Li, Buta, Payelle-Brogard, Qian, Vigant, Rubino, Gardner, Wedeking, Hermann, Duehr, Sanal, Tezcan, Mansouri, Tabarsi, Mansouri, Francois-Newton, Daussy, Rodriguez, Lenschow, Freiberg et al.: "ISG15 deficiency and increased viral resistance in humans but not mice. ..." in: **Nature communications**, Vol. 7, pp. 11496, (2018) ([PubMed](#)).
- Katzenell, Leib: "Herpes simplex virus and interferon signaling induce novel autophagic clusters in sensory neurons." in: **Journal of virology**, (2016) ([PubMed](#)).
- Huang, Bulavin: "Oncogene-mediated regulation of p53 ISGylation and functions." in: **Oncotarget**, Vol. 5, Issue 14, pp. 5808-18, (2015) ([PubMed](#)).
- Schanz, Baston-Büst, Heiss, Beyer, Krüssel, Hess: "Interferon stimulated gene 15 expression at the human embryo-maternal interface." in: **Archives of gynecology and obstetrics**, Vol. 290, Issue 4, pp. 783-9, (2014) ([PubMed](#)).

Images



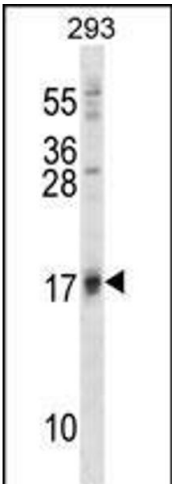
Immunohistochemistry (Paraffin-embedded Sections)

Image 1. Formalin-fixed and paraffin-embedded human cancer tissue reacted with the primary antibody, which was peroxidase-conjugated to the secondary antibody, followed by DAB staining. This data demonstrates the use of this antibody for immunohistochemistry, clinical relevance has not been evaluated. BC = breast carcinoma, HC = hepatocarcinoma.



Western Blotting

Image 2. Western blot analysis of ISG15 (arrow) using rabbit polyclonal hISG15-A46 (ABIN387983 and ABIN2844984). 293 cell lysates (2 µg/lane) either nontransfected (Lane 1) or transiently transfected with the ISG15 gene (Lane 2).



Western Blotting

Image 3. ISG15 Antibody (A46) (ABIN387983 and ABIN2844984) western blot analysis in 293 cell line lysates (35 µg/lane). This demonstrates the ISG15 antibody detected the ISG15 protein (arrow).

Please check the [product details page](#) for more images. Overall 4 images are available for ABIN387983.