

Datasheet for ABIN387989

anti-IFITM3 antibody (N-Term)

6 Images

6 Publications

[Go to Product page](#)

Overview

Quantity:	400 µL
Target:	IFITM3
Binding Specificity:	AA 1-30, N-Term
Reactivity:	Human, Mouse
Host:	Rabbit
Clonality:	Polyclonal
Conjugate:	This IFITM3 antibody is un-conjugated
Application:	Western Blotting (WB), Immunofluorescence (IF), Immunohistochemistry (Paraffin-embedded Sections) (IHC (p))

Product Details

Immunogen:	This Interferon-inducible protein (IFITM3) antibody is generated from rabbits immunized with a KLH conjugated synthetic peptide between 1-30 amino acids from the N-terminal region of human Interferon-inducible protein (IFITM3).
Clone:	RB13975
Isotype:	Ig Fraction
Purification:	This antibody is purified through a protein A column, followed by peptide affinity purification.

Target Details

Target:	IFITM3
Alternative Name:	Interferon-inducible protein (IFITM3) (IFITM3 Products)

Target Details

Background:	The family of interferon-induced transmembrane protein (Ifitm/mil/fragilis) cell surface proteins may modulate cell adhesion and influence cell differentiation.
Molecular Weight:	14632
Gene ID:	10410
NCBI Accession:	NP_066362
UniProt:	Q01628

Application Details

Application Notes:	IF: 1:100~500. WB: 1:1000. WB: 1:2000. WB: 1:1000. IHC-P-Leica: 1:100. IHC-P-Leica: 1:100
Restrictions:	For Research Use only

Handling

Format:	Liquid
Buffer:	Purified polyclonal antibody supplied in PBS with 0.09 % (W/V) sodium azide.
Preservative:	Sodium azide
Precaution of Use:	This product contains Sodium azide: a POISONOUS AND HAZARDOUS SUBSTANCE which should be handled by trained staff only.
Handling Advice:	Avoid freeze-thaw cycles.
Storage:	4 °C,-20 °C
Storage Comment:	Maintain refrigerated at 2-8 °C for up to 6 months. For long term storage store at -20 °C in small aliquots.
Expiry Date:	6 months

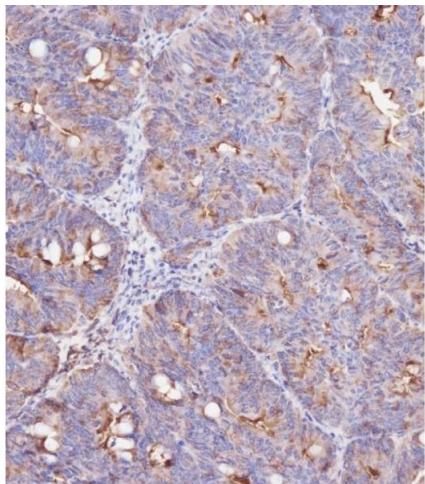
Publications

Product cited in:	Wu, Li, Fang, Yi, Chen, Long, Gao, Wei, Chen: "Investigation of synergistic mechanism and identification of interaction site of aldose reductase with the combination of gigantol and syringic acid for prevention of diabetic cataract." in: BMC complementary and alternative medicine , Vol. 16, Issue 1, pp. 286, (2017) (PubMed).
	Guo, Wang, Liu, Myatt, Sun: "Induction of PGF2? synthesis by cortisol through GR dependent

induction of CBR1 in human amnion fibroblasts." in: **Endocrinology**, Vol. 155, Issue 8, pp. 3017-24, (2014) ([PubMed](#)).

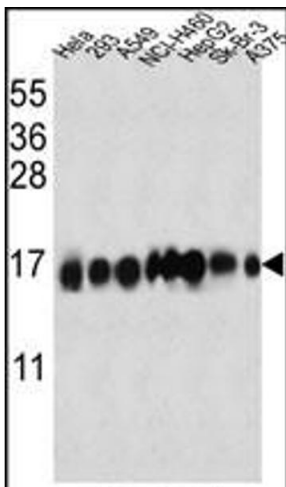
There are more publications referencing this product on: [Product page](#)

Images



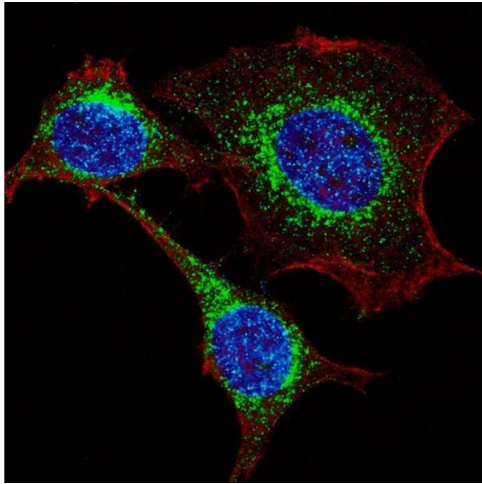
Immunohistochemistry (Paraffin-embedded Sections)

Image 1. Immunohistochemical analysis of (ABIN387989 and ABIN2845007) on paraffin-embedded Human colon carcinoma tissue was performed on the Leica®BOND RXm. Tissue was fixed with formaldehyde at room temperature. Heat induced epitope retrieval was performed by EDTA buffer (pH 9.0). Samples were incubated with primary Antibody (1:100) for 15 min at room temperature. Leica Bond Polymer Refine Detection was used as the secondary antibody.



Western Blotting

Image 2. IFITM3 Antibody (N-term) (ABIN387989 and ABIN2845007) western blot analysis in Hela,293,A549,NCI-,HepG2,Sk-Br-3, cell line lysates (35 µg/lane).This demonstrates the IFITM3 antibody detected the IFITM3 protein (arrow).



Immunofluorescence

Image 3. Fluorescent confocal image of HeLa cells stained with IFITM3 (N-term) antibody. HeLa cells were fixed with 4 % PFA (20 min), permeabilized with Triton X-100 (0.2 %, 30 min), then incubated with Fragilis (IFITM3) (N-term) primary antibody (1:200, 2 h at room temperature). For secondary antibody, Alexa Fluor® 488 conjugated donkey anti-rabbit antibody (green) was used (1:1000, 1h). Cytoplasmic actin was counterstained with Alexa Fluor® 555 (red) conjugated Phalloidin (5.25 μ M, 25 min). Nuclei were counterstained with Hoechst 33342 (blue) (10 μ g/mL, 3 min). Note the highly specific localization of the IFITM3 immunoreactivity to the Golgi.

Please check the [product details page](#) for more images. Overall 6 images are available for ABIN387989.