

Datasheet for ABIN388010
anti-PRDM2 antibody (AA 245-573)[Go to Product page](#)

1 Image

Overview

Quantity:	400 µL
Target:	PRDM2
Binding Specificity:	AA 245-573
Reactivity:	Rat
Host:	Rabbit
Clonality:	Polyclonal
Conjugate:	This PRDM2 antibody is un-conjugated
Application:	Immunohistochemistry (Paraffin-embedded Sections) (IHC (p))

Product Details

Immunogen:	Purified recombinant GST fusion protein encoding aa 245-573 of rat PRDM2.
Clone:	HS1637
Isotype:	IgG
Purification:	This antibody is purified through a protein A column, followed by peptide affinity purification.

Target Details

Target:	PRDM2
Alternative Name:	PRDM2 (RIZ1) (PRDM2 Products)
Background:	PRDM2 is a 250-kD nuclear protein containing 8 zinc finger motifs. It contains an RB-binding motif that is related to that of the adenovirus E1A oncoprotein, RIZ also shares an antigenic

Target Details

epitope with the C terminus of E1A. It is expressed in human retinoblastoma cells and at low levels in all other human cell lines examined. Using fluorescence in situ hybridization, the PRDM2 gene has been mapped to 1p36. PRDM2 may be a candidate target of 1p36 alterations that commonly occur in neuroendocrine, breast, liver, colon, skin, and lymphoid tumors.

Molecular Weight: 187555

Gene ID: 7799

NCBI Accession: [NP_001007258](#), [NP_001129082](#), [NP_036363](#), [NP_056950](#)

UniProt: [Q63755](#)

Application Details

Application Notes: IHC-P: 1:100~500

Restrictions: For Research Use only

Handling

Format: Liquid

Buffer: Purified polyclonal antibody supplied in PBS with 0.09 % (W/V) sodium azide.

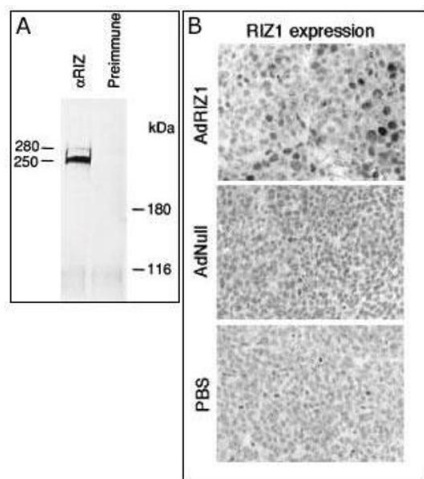
Preservative: Sodium azide

Precaution of Use: This product contains Sodium azide: a POISONOUS AND HAZARDOUS SUBSTANCE which should be handled by trained staff only.

Storage: 4 °C,-20 °C

Storage Comment: Maintain refrigerated at 2-8 °C for up to 6 months. For long term storage store at -20 °C in small aliquots to prevent freeze-thaw cycles.

Expiry Date: 6 months



Immunohistochemistry (Paraffin-embedded Sections)

Image 1. A) Rat B50 brain tumor cell extracts were immunoprecipitated with RIZ1 antibody (cat (ABIN388010 and ABIN2845353)) or preimmune (ref.9). B) Immunohistochemical analysis of RIZ1 in adenovirus-transduced tumor cells. Established HC xenograft tumors at day 2 after infection of AdRIZ1, Adnull, or buffer alone were processed for RIZ1 in situ detection (TUNEL) analysis (ref.10).