

Datasheet for ABIN388025  
**anti-PRMT8 antibody (C-Term)**[Go to Product page](#)

## 3 Images

## Overview

Quantity:	400 µL
Target:	PRMT8
Binding Specificity:	AA 344-373, C-Term
Reactivity:	Human
Host:	Rabbit
Clonality:	Polyclonal
Conjugate:	This PRMT8 antibody is un-conjugated
Application:	Western Blotting (WB)

## Product Details

Immunogen:	This PRMT8 antibody is generated from rabbits immunized with a KLH conjugated synthetic peptide between 344-373 amino acids from the C-terminal region of human PRMT8.
Clone:	RB13015
Isotype:	Ig Fraction
Predicted Reactivity:	M
Purification:	This antibody is prepared by Saturated Ammonium Sulfate (SAS) precipitation followed by dialysis against PBS.

## Target Details

Target:	PRMT8
---------	-------

## Target Details

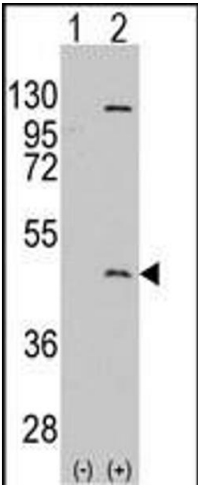
Alternative Name:	PRMT8 ( <a href="#">PRMT8 Products</a> )
Background:	Protein arginine methylation plays a role in signal transduction, RNA processing, transcriptional regulation, and DNA repair. PRMT8, a protein arginine N-methyltransferase most closely related to PRMT1, methylates the guanidino nitrogens of arginyl residues in some proteins. This protein associates with the plasma membrane following myristoylation and exhibits a brain-specific expression pattern, making it unique within this family of enzymes.
Molecular Weight:	45291
Gene ID:	56341
NCBI Accession:	<a href="#">NP_001243465</a> , <a href="#">NP_062828</a>
UniProt:	<a href="#">Q9NR22</a>

## Application Details

Application Notes:	WB: 1:1000. WB: 1:1000. WB: 1:1000
Restrictions:	For Research Use only

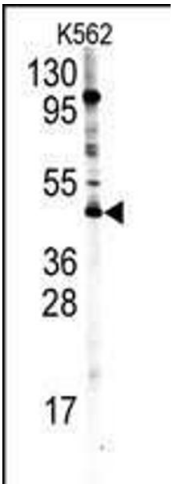
## Handling

Format:	Liquid
Buffer:	Purified polyclonal antibody supplied in PBS with 0.09 % (W/V) sodium azide.
Preservative:	Sodium azide
Precaution of Use:	This product contains Sodium azide: a POISONOUS AND HAZARDOUS SUBSTANCE which should be handled by trained staff only.
Storage:	4 °C, -20 °C
Storage Comment:	Maintain refrigerated at 2-8 °C for up to 6 months. For long term storage store at -20 °C in small aliquots to prevent freeze-thaw cycles.
Expiry Date:	6 months



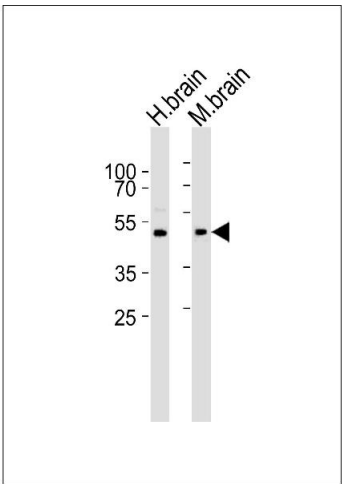
#### Western Blotting

**Image 1.** Western blot analysis of PRMT8 (arrow) using rabbit polyclonal PRMT8 Antibody (C-term) (ABIN388025 and ABIN2845473). 293 cell lysates (2 µg/lane) either nontransfected (Lane 1) or transiently transfected with the PRMT8 gene (Lane 2) (Origene Technologies).



#### Western Blotting

**Image 2.** Western blot analysis of PRMT8 Antibody (C-term) (ABIN388025 and ABIN2845473) in K562 cell line lysates (35 µg/lane). PRMT8 (arrow) was detected using the purified Fab.



#### Western Blotting

**Image 3.** Western blot analysis of lysates from human brain, mouse brain tissue lysate (from left to right), using PRMT8 Antibody (C-term) (ABIN388025 and ABIN2845473). (ABIN388025 and ABIN2845473) was diluted at 1:1000 at each lane. A goat anti-rabbit IgG H&L(HRP) at 1:10000 dilution was used as the secondary antibody. Lysates at 35 µg per lane.