



Datasheet for ABIN388027

anti-SUMO1 antibody (C-Term)



[Go to Product page](#)

4 Images

3 Publications

Overview

Quantity:	400 µL
Target:	SUMO1
Binding Specificity:	AA 55-86, C-Term
Reactivity:	Human
Host:	Rabbit
Clonality:	Polyclonal
Conjugate:	This SUMO1 antibody is un-conjugated
Application:	Western Blotting (WB), Flow Cytometry (FACS), Immunohistochemistry (Paraffin-embedded Sections) (IHC (p))

Product Details

Immunogen:	This SUMO1 antibody is generated from rabbits immunized with a KLH conjugated synthetic peptide between 55-86 amino acids from the C-terminal region of human SUMO1.
Clone:	RB0632
Isotype:	Ig Fraction
Predicted Reactivity:	B, M, Pig, Rat
Purification:	This antibody is prepared by Saturated Ammonium Sulfate (SAS) precipitation followed by dialysis against PBS.

Target Details

Target:	SUMO1
---------	-------

Target Details

Alternative Name:	SUMO1 (SUMO1 Products)
Background:	Covalent modification of target lysines by SUMO (small ubiquitin-like modifier) modulates processes such as protein localization, transcription, nuclear transport, mitosis, DNA replication and repair, signal transduction, and viral reproduction. SUMO does not seem to be involved in protein degradation and may in fact function as an antagonist of ubiquitin in the degradation process. The SUMO family consists of SUMO1 and closely related homologs SUMO2, SUMO3, and SUMO4. Sumoylation has been shown to regulate a wide range of proteins, including MDM2, PIAS, PML, RanGAP1, RanBP2, p53, p73, HIPK2, TEL, c-Jun, Fas, Daxx, TNFRI, Topo-I, Topo-II, PARK2, WRN, Sp100, I κ B-alpha, Androgen receptor (AR), GLUT1/4, CaMK, DNMT3B, TDG, HIF1A, CHD3, EXOSC9, RAD51, and viral targets such as CMV-IE1/2, EBV-BZLF1, and HPV/BPV-E1.
Molecular Weight:	11557
Gene ID:	7341
NCBI Accession:	NP_001005781 , NP_001005782 , NP_003343
UniProt:	P63165
Pathways:	M Phase , Positive Regulation of Endopeptidase Activity , Protein targeting to Nucleus , Ubiquitin Proteasome Pathway

Application Details

Application Notes:	WB: 1:1000. WB: 1:1000. IHC-P: 1:50~100. FC: 1:10~50
Restrictions:	For Research Use only

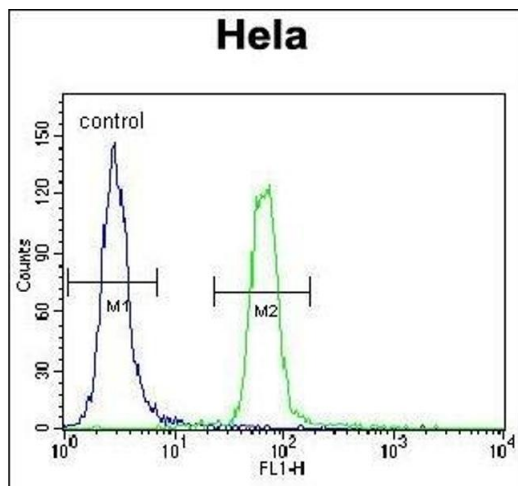
Handling

Format:	Liquid
Buffer:	Purified polyclonal antibody supplied in PBS with 0.09 % (W/V) sodium azide.
Preservative:	Sodium azide
Precaution of Use:	This product contains Sodium azide: a POISONOUS AND HAZARDOUS SUBSTANCE which should be handled by trained staff only.
Storage:	4 °C,-20 °C
Storage Comment:	Maintain refrigerated at 2-8 °C for up to 6 months. For long term storage store at -20 °C in small aliquots to prevent freeze-thaw cycles.

Publications

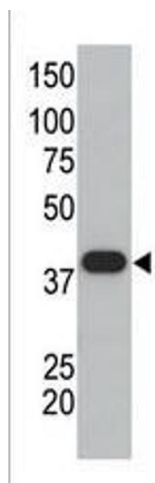
Product cited in: Wang, Wang, Liu, Liu, Tay, Walsh, Yang, Wu: "CRISPR/Cas9 mediated genome editing of *Helicoverpa armigera* with mutations of an ABC transporter gene *HaABCA2* confers resistance to *Bacillus thuringiensis* Cry2A toxins." in: **Insect biochemistry and molecular biology**, Vol. 87, pp. 147-153, (2017) ([PubMed](#)).

Images



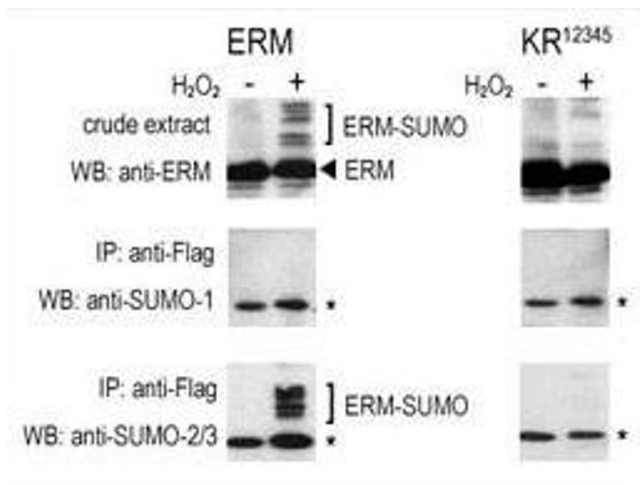
Flow Cytometry

Image 1. SUMO1 Antibody (C-term) (ABIN388027 and ABIN2845493) flow cytometric analysis of HeLa cells (right histogram) compared to a negative control cell (left histogram). FITC-conjugated goat-anti-rabbit secondary antibodies were used for the analysis.



Western Blotting

Image 2. The anti-SUMO1 polyclonal antibody (ABIN388027 and ABIN2845493) is used in Western blot to detect GST-SUMO1 fusion protein.



Western Blotting

Image 3. COS-7 cells were transfected for 24 hrs with a plasmid expressing FLAG-ERM (left panels) or FLAG-ERM K (right panels). Untreated (-) and H₂O₂-treated (+) cells were collected for immunoblot analysis. Top panels: cell lysates probed by western blot (WB) with an anti-ERM antibody. Center panels: cell lysates immunoprecipitated (IP) with an anti-FLAG antibody followed by WB with (ABIN388027 and ABIN2845493) SUMO-1 antibody. Bottom panels: cell lysates immunoprecipitated with an anti-FLAG antibody followed by WB with (ABIN388034 and ABIN2845512) SUMO-2/3 antibody. (*) represents immunoprecipitated ERM-like forms recognized by anti-SUMO antibodies.

Please check the [product details page](#) for more images. Overall 4 images are available for ABIN388027.