



[Go to Product page](#)

Datasheet for ABIN388045

anti-SEN2 antibody (C-Term)

3 Images

2 Publications

Overview

Quantity:	400 µL
Target:	SEN2
Binding Specificity:	AA 502-533, C-Term
Reactivity:	Human, Mouse
Host:	Rabbit
Clonality:	Polyclonal
Conjugate:	This SEN2 antibody is un-conjugated
Application:	Western Blotting (WB), Immunohistochemistry (Paraffin-embedded Sections) (IHC (p))

Product Details

Immunogen:	This SEN2 antibody is generated from rabbits immunized with a KLH conjugated synthetic peptide between 502-533 amino acids from the C-terminal region of human SEN2.
Clone:	RB2705
Isotype:	Ig Fraction
Purification:	This antibody is prepared by Saturated Ammonium Sulfate (SAS) precipitation followed by dialysis against PBS.

Target Details

Target:	SEN2
Alternative Name:	SEN2 (SEN2 Products)

Target Details

Background:	SUMO is a small ubiquitin-like protein that can be covalently conjugated to other proteins. SENP2 is one of a group of enzymes that process newly synthesized SUMO1, SUMO2, and SUMO3 into the conjugatable mature forms and catalyze the deconjugation of these same SUMO proteins from their targeted substrates. SENP2 may also down-regulate CTNNB1 levels and thereby modulate the Wnt pathway.
Molecular Weight:	67855
Gene ID:	59343
NCBI Accession:	NP_067640
UniProt:	Q9HC62
Pathways:	Chromatin Binding

Application Details

Application Notes:	WB: 1:1000. WB: 1:1000. IHC-P: 1:50~100
Restrictions:	For Research Use only

Handling

Format:	Liquid
Buffer:	Purified polyclonal antibody supplied in PBS with 0.09 % (W/V) sodium azide.
Preservative:	Sodium azide
Precaution of Use:	This product contains Sodium azide: a POISONOUS AND HAZARDOUS SUBSTANCE which should be handled by trained staff only.
Storage:	4 °C, -20 °C
Storage Comment:	Maintain refrigerated at 2-8 °C for up to 6 months. For long term storage store at -20 °C in small aliquots to prevent freeze-thaw cycles.
Expiry Date:	6 months

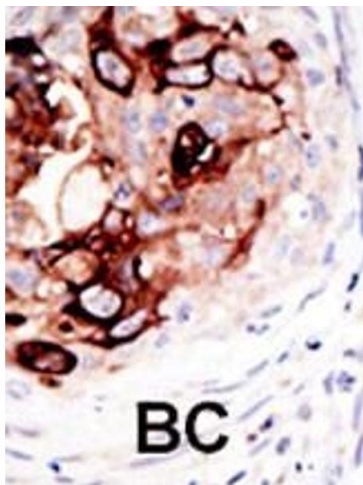
Publications

Product cited in:	Xu, Wang, Chang, Du, Diao, Jiang, Wang, Ma, Zhang: "Mammalian sterile 20-like kinase 1/2 inhibits the Wnt/?-catenin signalling pathway by directly binding casein kinase 1?." in: The Biochemical journal , Vol. 458, Issue 1, pp. 159-69, (2014) (PubMed).
-------------------	--

Rajyaguru, She, Parker: "Scd6 targets eIF4G to repress translation: RGG motif proteins as a class of eIF4G-binding proteins." in: **Molecular cell**, Vol. 45, Issue 2, pp. 244-54, (2012) ([PubMed](#)).

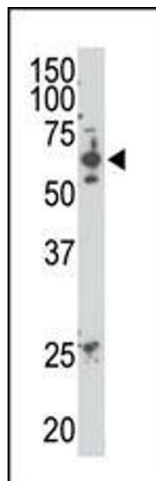
Nissan, Rajyaguru, She, Song, Parker: "Decapping activators in *Saccharomyces cerevisiae* act by multiple mechanisms." in: **Molecular cell**, Vol. 39, Issue 5, pp. 773-83, (2010) ([PubMed](#)).

Images



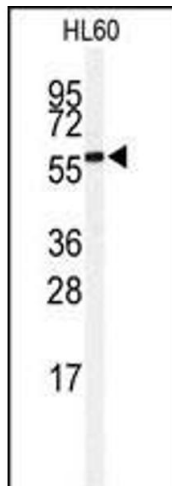
Immunohistochemistry (Paraffin-embedded Sections)

Image 1. Formalin-fixed and paraffin-embedded human cancer tissue reacted with the primary antibody, which was peroxidase-conjugated to the secondary antibody, followed by AEC staining. This data demonstrates the use of this antibody for immunohistochemistry, clinical relevance has not been evaluated. BC = breast carcinoma, HC = hepatocarcinoma.



Western Blotting

Image 2. The SENP2 C-term polyclonal antibody (ABIN388045 and ABIN2845577) is used in Western blot to detect SENP2 in mouse heart tissue lysate.



Western Blotting

Image 3. Western blot analysis of anti-SEN2 Antibody (C-term) (ABIN388045 and ABIN2845577) in HL60 cell line lysates (35 µg/lane). SEN2(arrow) was detected using the purified Pab.