

Datasheet for ABIN388052

anti-SENP6 antibody (C-Term)

3 Images

3 Publications

[Go to Product page](#)

Overview

Quantity:	400 µL
Target:	SENP6
Binding Specificity:	AA 1081-1112, C-Term
Reactivity:	Human
Host:	Rabbit
Clonality:	Polyclonal
Conjugate:	This SENP6 antibody is un-conjugated
Application:	Western Blotting (WB), Immunohistochemistry (Paraffin-embedded Sections) (IHC (p))

Product Details

Immunogen:	This SENP6 antibody is generated from rabbits immunized with a KLH conjugated synthetic peptide between 1081-1112 amino acids from the C-terminal region of human SENP6.
Clone:	RB0664
Isotype:	Ig Fraction
Purification:	This antibody is prepared by Saturated Ammonium Sulfate (SAS) precipitation followed by dialysis against PBS.

Target Details

Target:	SENP6
Alternative Name:	SENP6 (SENP6 Products)

Target Details

Background: SENP6 (SUSP1) is a protease that deconjugates SUMO1, SUMO2 and SUMO3 from targeted proteins. This protein does not seem to be involved in the processing of full-length SUMO proteins to their mature conjugatable forms. SENP6 deconjugates SUMO1 from RXRA, leading to transcriptional activation. It may act preferentially on substrates containing 3 or more SUMO2 or SUMO3 moieties.

Molecular Weight: 126146

Gene ID: 26054

NCBI Accession: [NP_001093879](#), [NP_056386](#)

UniProt: [Q9GZR1](#)

Application Details

Application Notes: WB: 1:1000. IHC-P: 1:50~100. IHC-P: 1:100

Restrictions: For Research Use only

Handling

Format: Liquid

Buffer: Purified polyclonal antibody supplied in PBS with 0.09 % (W/V) sodium azide.

Preservative: Sodium azide

Precaution of Use: This product contains Sodium azide: a POISONOUS AND HAZARDOUS SUBSTANCE which should be handled by trained staff only.

Storage: 4 °C,-20 °C

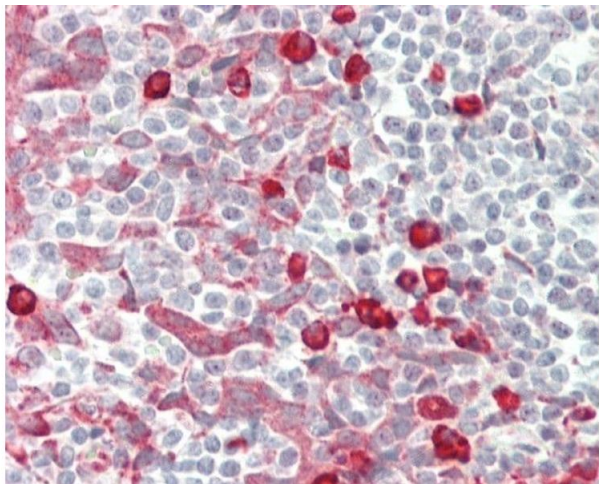
Storage Comment: Maintain refrigerated at 2-8 °C for up to 6 months. For long term storage store at -20 °C in small aliquots to prevent freeze-thaw cycles.

Expiry Date: 6 months

Publications

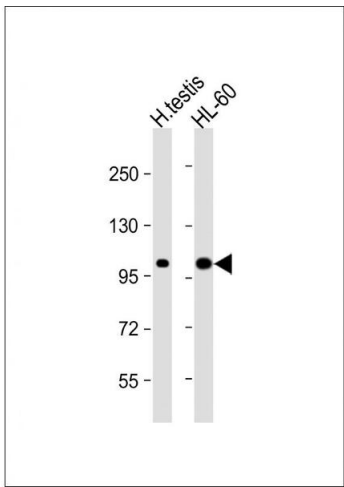
Product cited in: Wu, Li, Fang, Yi, Chen, Long, Gao, Wei, Chen: "Investigation of synergistic mechanism and identification of interaction site of aldose reductase with the combination of gigantol and syringic acid for prevention of diabetic cataract." in: **BMC complementary and alternative medicine**, Vol. 16, Issue 1, pp. 286, (2017) ([PubMed](#)).

Guo, Wang, Liu, Myatt, Sun: "Induction of PGF2 γ synthesis by cortisol through GR dependent induction of CBR1 in human amnion fibroblasts." in: **Endocrinology**, Vol. 155, Issue 8, pp. 3017-24, (2014) ([PubMed](#)).



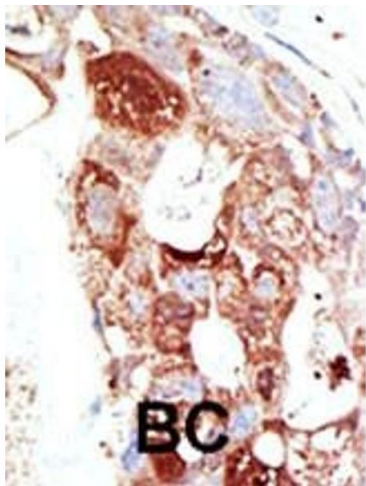
Immunohistochemistry (Paraffin-embedded Sections)

Image 1. Formalin-fixed and paraffin-embedded H. tonsil tissue reacted with SENP6 Antibody (C-term) (ABIN388052 and ABIN2845633).



Western Blotting

Image 2. All lanes : Anti-SENP6 Antibody at 1:1000 dilution
Lane 1: human testis lysate Lane 2: HL-60 whole cell lysate
Lysates/proteins at 20 μ g per lane. Secondary Goat Anti-Rabbit IgG, (H+L), Peroxidase conjugated at 1/10000 dilution. Predicted band size : 126 kDa Blocking/Dilution buffer: 5 % NFDM/TBST.



Immunohistochemistry (Paraffin-embedded Sections)

Image 3. Formalin-fixed and paraffin-embedded human cancer tissue reacted with the primary antibody, which was peroxidase-conjugated to the secondary antibody, followed by DAB staining. This data demonstrates the use of this antibody for immunohistochemistry, clinical relevance has not been evaluated. BC = breast carcinoma, HC = hepatocarcinoma.