

Datasheet for ABIN388073  
**anti-SENP8 antibody (N-Term)**

## 2 Images

[Go to Product page](#)

## Overview

Quantity:	400 µL
Target:	SENP8
Binding Specificity:	AA 4-35, N-Term
Reactivity:	Human, Mouse
Host:	Rabbit
Clonality:	Polyclonal
Conjugate:	This SENP8 antibody is un-conjugated
Application:	Western Blotting (WB)

## Product Details

Immunogen:	This SENP8 antibody is generated from rabbits immunized with a KLH conjugated synthetic peptide between 4-35 amino acids from the N-terminal region of human SENP8.
Clone:	RB2330
Isotype:	Ig Fraction
Purification:	This antibody is prepared by Saturated Ammonium Sulfate (SAS) precipitation followed by dialysis against PBS.

## Target Details

Target:	SENP8
Alternative Name:	SENP8 ( <a href="#">SENP8 Products</a> )

## Target Details

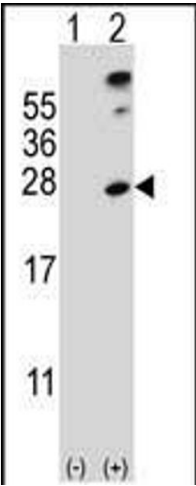
Background:	NEDD8 is a ubiquitin-like protein that becomes conjugated to the cullin subunit of several ubiquitin ligases. This conjugation, called neddylation, is required for optimal ubiquitin ligase activity. SENP8 is a protease that catalyzes two essential functions in the NEDD8 pathway: processing of full-length NEDD8 to its mature form and deconjugation of NEDD8 from targeted proteins such as cullins or p53.
Molecular Weight:	24107
Gene ID:	123228
NCBI Accession:	<a href="#">NP_001159812</a> , <a href="#">NP_001165580</a> , <a href="#">NP_001165581</a> , <a href="#">NP_001165582</a> , <a href="#">NP_660205</a>
UniProt:	<a href="#">Q96LD8</a>

## Application Details

Application Notes:	WB: 1:1000. WB: 1:1000
Restrictions:	For Research Use only

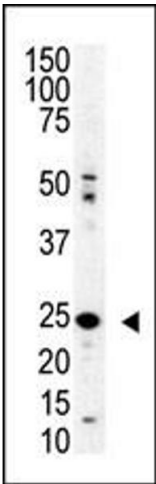
## Handling

Format:	Liquid
Buffer:	Purified polyclonal antibody supplied in PBS with 0.09 % (W/V) sodium azide.
Preservative:	Sodium azide
Precaution of Use:	This product contains Sodium azide: a POISONOUS AND HAZARDOUS SUBSTANCE which should be handled by trained staff only.
Storage:	4 °C,-20 °C
Storage Comment:	Maintain refrigerated at 2-8 °C for up to 6 months. For long term storage store at -20 °C in small aliquots to prevent freeze-thaw cycles.
Expiry Date:	6 months



#### Western Blotting

**Image 1.** Western blot analysis of SENP8 (arrow) using rabbit polyclonal SENP8 Antibody (S19) (ABIN388073 and ABIN2845796). 293 cell lysates (2 µg/lane) either nontransfected (Lane 1) or transiently transfected (Lane 2) with the SENP8 gene.



#### Western Blotting

**Image 2.** Western blot analysis of SENP8 polyclonal antibody (ABIN388073 and ABIN2845796) in mouse spleen lysate. SENP8 (arrow) was detected using purified Pab. Secondary HRP-anti-rabbit was used for signal visualization with chemiluminescence.