

Datasheet for ABIN388082

anti-SUV39H2 antibody (C-Term)**3** Images[Go to Product page](#)

Overview

Quantity:	400 µL
Target:	SUV39H2
Binding Specificity:	AA 360-390, C-Term
Reactivity:	Human, Rat
Host:	Rabbit
Clonality:	Polyclonal
Conjugate:	This SUV39H2 antibody is un-conjugated
Application:	Western Blotting (WB), Immunohistochemistry (Paraffin-embedded Sections) (IHC (p))

Product Details

Immunogen:	This SUV39H2 antibody is generated from rabbits immunized with a KLH conjugated synthetic peptide between 360-390 amino acids from the C-terminal region of human SUV39H2.
Clone:	RB02739
Isotype:	Ig Fraction
Predicted Reactivity:	Pr
Purification:	This antibody is prepared by Saturated Ammonium Sulfate (SAS) precipitation followed by dialysis against PBS.

Target Details

Target:	SUV39H2
---------	---------

Target Details

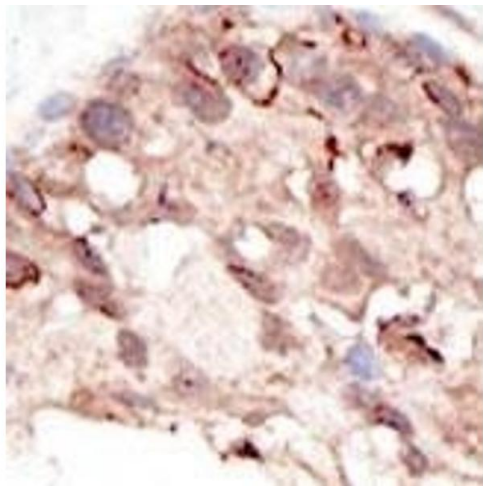
Alternative Name:	SUV39H2 (SUV39H2 Products)
Background:	<p>The murine gene Suv39h2 encodes an H3 histone methyltransferase (HMTase) 59 % identical in sequence to mouse Suv39h1. During embryogenesis, both proteins overlap in tissue expression, yet Suv39h2 transcripts are restricted to the testes in adult animals.</p> <p>Immunolocalization of the Suv39h2 protein during spermatogenesis indicates enrichment at the heterochromatin from the leptotene to the round spermatid stage. Moreover, Suv39h2 specifically accumulates with chromatin of the sex chromosomes, which undergo transcriptional silencing during the first meiotic prophase. Suv39h2 HMTase may also organize meiotic heterochromatin with the potential for epigenetic imprint to the male germline.</p>
Molecular Weight:	46682
Gene ID:	79723
NCBI Accession:	NP_001180353 , NP_001180354 , NP_001180355 , NP_001180356 , NP_078946
UniProt:	Q9H5I1

Application Details

Application Notes:	WB: 1:1000. WB: 1:1000. IHC-P: 1:50~100
Restrictions:	For Research Use only

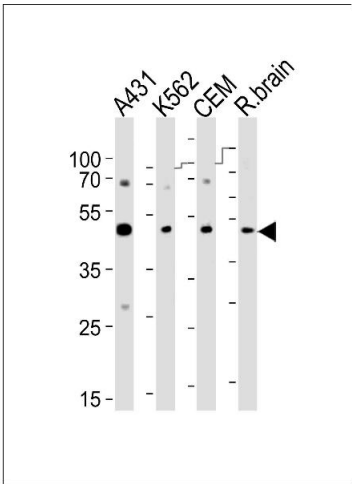
Handling

Format:	Liquid
Buffer:	Purified polyclonal antibody supplied in PBS with 0.09 % (W/V) sodium azide.
Preservative:	Sodium azide
Precaution of Use:	This product contains Sodium azide: a POISONOUS AND HAZARDOUS SUBSTANCE which should be handled by trained staff only.
Handling Advice:	Avoid freeze-thaw cycles.
Storage:	4 °C,-20 °C
Storage Comment:	Maintain refrigerated at 2-8 °C for up to 6 months. For long term storage store at -20 °C in small aliquots.
Expiry Date:	6 months



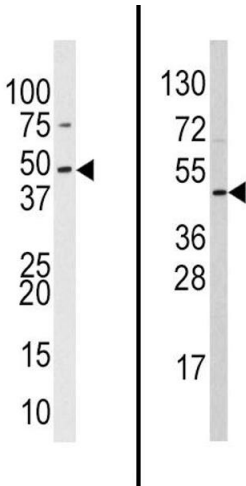
Immunohistochemistry (Paraffin-embedded Sections)

Image 1. Formalin-fixed and paraffin-embedded human cancer tissue reacted with the primary antibody, which was peroxidase-conjugated to the secondary antibody, followed by DAB staining. This data demonstrates the use of this antibody for immunohistochemistry, clinical relevance has not been evaluated. BC = breast carcinoma, HC = hepatocarcinoma.



Western Blotting

Image 2. Western blot analysis of lysates from A431, K562, CEM cell line and rat brain tissue lyaste(from left to right), using SUV39H2 Antibody B. B was diluted at 1:1000 at each lane. A goat anti-rabbit IgG H&L(HRP) at 1:10000 dilution was used as the secondary antibody. Lysates at 35 µg per lane.



Western Blotting

Image 3. Western blot analysis of anti-hSUV39H2- Pab (Cat. (ABIN388082 and ABIN2845970)) in 293 and HL60 cell line lysates (35 µg/lane). hSUV39H2-(arrow) was detected using the purified Pab.