

Datasheet for ABIN388092
anti-BCL2A1 antibody (Ala1)[Go to Product page](#)

2 Images

1 Publication

Overview

Quantity:	400 µL
Target:	BCL2A1
Binding Specificity:	AA 30-65, Ala1
Reactivity:	Human
Host:	Rabbit
Clonality:	Polyclonal
Conjugate:	This BCL2A1 antibody is un-conjugated
Application:	Western Blotting (WB), Immunohistochemistry (Paraffin-embedded Sections) (IHC (p))

Product Details

Immunogen:	This BCL2A1 (A1) antibody is generated from rabbits immunized with a KLH conjugated synthetic peptide between 30-65 amino acids from human BCL2A1 (A1).
Clone:	RB1251
Isotype:	Ig Fraction
Purification:	This antibody is prepared by Saturated Ammonium Sulfate (SAS) precipitation followed by dialysis against PBS.

Target Details

Target:	BCL2A1
Alternative Name:	BCL2A1 (BCL2A1 Products)

Target Details

Background: Bcl-2 related Protein A1 is a member of the BCL-2 protein family. The proteins of this family form hetero- or homodimers and act as anti- and pro-apoptotic regulators that are involved in a wide variety of cellular activities such as embryonic development, homeostasis and tumorigenesis. The protein encoded by this gene is able to reduce the release of pro-apoptotic cytochrome c from mitochondria and block caspase activation. This gene is a direct transcription target of NF-kappa B in response to inflammatory mediators, and has been shown to be up-regulated by different extracellular signals, such as granulocyte-macrophage colony-stimulating factor (GM-CSF), CD40, phorbol ester and inflammatory cytokine TNF and IL-1, which suggests a cytoprotective function that is essential for lymphocyte activation as well as cell survival.

Molecular Weight: 20132

Gene ID: 597

NCBI Accession: [NP_001108207](#), [NP_004040](#)

UniProt: [Q16548](#)

Application Details

Application Notes: WB: 1:1000. IHC-P: 1:50~100

Restrictions: For Research Use only

Handling

Format: Liquid

Buffer: Purified polyclonal antibody supplied in PBS with 0.09 % (W/V) sodium azide.

Preservative: Sodium azide

Precaution of Use: This product contains Sodium azide: a POISONOUS AND HAZARDOUS SUBSTANCE which should be handled by trained staff only.

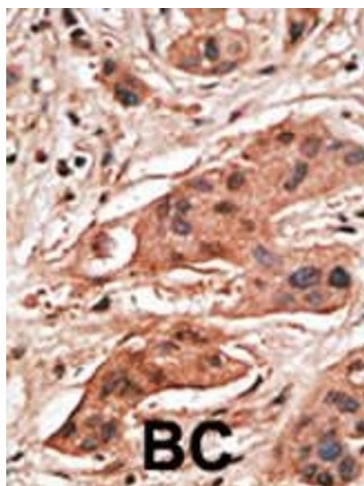
Storage: 4 °C, -20 °C

Storage Comment: Maintain refrigerated at 2-8 °C for up to 6 months. For long term storage store at -20 °C in small aliquots to prevent freeze-thaw cycles.

Expiry Date: 6 months

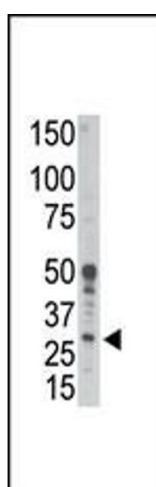
Product cited in: Hedlund, Karlsson, Osborn, Ludwig, Isacson: "Global gene expression profiling of somatic motor neuron populations with different vulnerability identify molecules and pathways of degeneration and protection." in: **Brain : a journal of neurology**, Vol. 133, Issue Pt 8, pp. 2313-30, (2010) ([PubMed](#)).

Images



Immunohistochemistry (Paraffin-embedded Sections)

Image 1. Formalin-fixed and paraffin-embedded human cancer tissue reacted with the primary antibody, which was peroxidase-conjugated to the secondary antibody, followed by DAB staining. This data demonstrates the use of this antibody for immunohistochemistry, clinical relevance has not been evaluated. BC = breast carcinoma, HC = hepatocarcinoma.



Western Blotting

Image 2. Western blot analysis of anti-Bcl2-related Protein A1 Pab (ABIN388092 and ABIN2846124) in human placenta tissue lysate. Bcl2-related Protein A1 (arrow) was detected using purified Pab. Secondary HRP-anti-rabbit was used for signal visualization with chemiluminescence.