

Datasheet for ABIN388097  
**anti-BCL2L2 antibody (AA 24-59)**

## 5 Images

[Go to Product page](#)

## Overview

Quantity:	400 µL
Target:	BCL2L2
Binding Specificity:	AA 24-59
Reactivity:	Human, Mouse
Host:	Rabbit
Clonality:	Polyclonal
Conjugate:	This BCL2L2 antibody is un-conjugated
Application:	Western Blotting (WB), Immunohistochemistry (Paraffin-embedded Sections) (IHC (p))

## Product Details

Immunogen:	This Bcl antibody is generated from rabbits immunized with a KLH conjugated synthetic peptide between 24-59 amino acids from human Bcl.
Clone:	RB0972
Isotype:	Ig Fraction
Predicted Reactivity:	B
Purification:	This antibody is prepared by Saturated Ammonium Sulfate (SAS) precipitation followed by dialysis against PBS.

## Target Details

Target:	BCL2L2
---------	--------

## Target Details

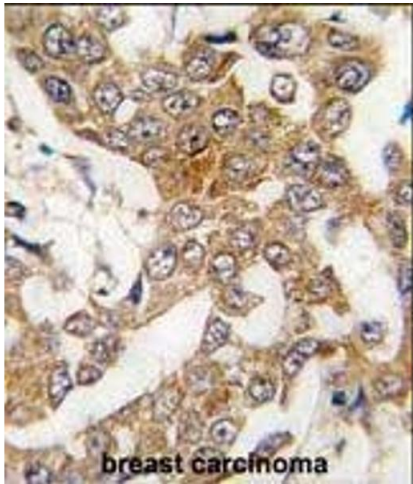
Alternative Name:	Bcl-w ( <a href="#">BCL2L2 Products</a> )
Background:	Bcl-w is a member of the BCL-2 protein family. The proteins of this family form hetero- or homodimers and act as anti- and pro-apoptotic regulators. Expression of this gene in cells has been shown to contribute to reduced cell apoptosis under cytotoxic conditions. Studies of the related gene in mice indicated a role in the survival of NGF- and BDNF-dependent neurons. Mutation and knockout studies of the mouse gene demonstrated an essential role in adult spermatogenesis.
Molecular Weight:	20746
Gene ID:	599
NCBI Accession:	<a href="#">NP_001186768</a> , <a href="#">NP_004041</a>
UniProt:	<a href="#">Q92843</a>

## Application Details

Application Notes:	WB: 1:1000. WB: 1:1000. WB: 1:1000. IHC-P: 1:50~100. IHC-P: 1:50~100
Restrictions:	For Research Use only

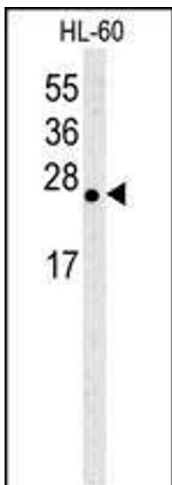
## Handling

Format:	Liquid
Buffer:	Purified polyclonal antibody supplied in PBS with 0.09 % (W/V) sodium azide.
Preservative:	Sodium azide
Precaution of Use:	This product contains Sodium azide: a POISONOUS AND HAZARDOUS SUBSTANCE which should be handled by trained staff only.
Storage:	4 °C,-20 °C
Storage Comment:	Maintain refrigerated at 2-8 °C for up to 6 months. For long term storage store at -20 °C in small aliquots to prevent freeze-thaw cycles.
Expiry Date:	6 months



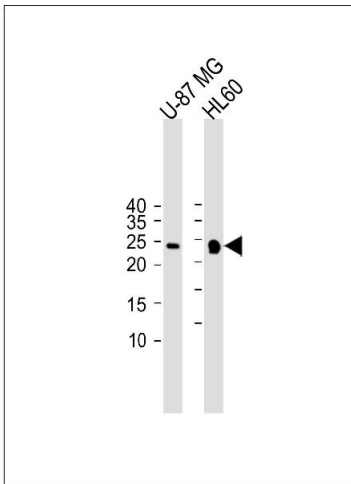
#### Immunohistochemistry (Paraffin-embedded Sections)

**Image 1.** Formalin-fixed and paraffin-embedded human breast carcinoma tissue reacted with Bcl-w BH3 Domain Antibody (ABIN388097 and ABIN2846167) , which was peroxidase-conjugated to the secondary antibody, followed by DAB staining. This data demonstrates the use of this antibody for immunohistochemistry, clinical relevance has not been evaluated.



#### Western Blotting

**Image 2.** Western blot analysis of anti-Bcl-w BH3 domain Pab (ABIN388097 and ABIN2846167) in HL-60 cell lysate. Bcl-w BH3 domain (arrow) was detected using purified Pab. Secondary HRP-anti-rabbit was used for signal visualization with chemiluminescence.



#### Western Blotting

**Image 3.** All lanes : Anti-Bcl-w Antibody (BH3 Domain Specific) at 1:1000 dilution Lane 1: U-87 MG whole cell lysate Lane 2: HL-60 whole cell lysate Lysates/proteins at 20 µg per lane. Secondary Goat Anti-Rabbit IgG, (H+L), Peroxidase conjugated (AS) at 1/15000 dilution. Observed band size : 21 kDa Blocking/Dilution buffer: 5 % NFDM/TBST.

Please check the [product details page](#) for more images. Overall 5 images are available for ABIN388097.