

Datasheet for ABIN388101
anti-BIM antibody (AA 130-165)



[Go to Product page](#)

2 Images

2 Publications

Overview

Quantity:	400 µL
Target:	BIM (BCL2L11)
Binding Specificity:	AA 130-165
Reactivity:	Human
Host:	Rabbit
Clonality:	Polyclonal
Conjugate:	This BIM antibody is un-conjugated
Application:	Western Blotting (WB), Immunohistochemistry (Paraffin-embedded Sections) (IHC (p))

Product Details

Immunogen:	This Bim BH3 Domain antibody is generated from rabbits immunized with a KLH conjugated synthetic peptide between 130-165 amino acids from human Bim BH3 Domain.
Clone:	RB00963
Isotype:	Ig Fraction
Purification:	This antibody is prepared by Saturated Ammonium Sulfate (SAS) precipitation followed by dialysis against PBS.

Target Details

Target:	BIM (BCL2L11)
Alternative Name:	Bim (BCL2L11 Products)

Target Details

Background:	Bim belongs to the BCL-2 protein family. BCL-2 family members form hetero- or homodimers and act as anti- or pro-apoptotic regulators that are involved in a wide variety of cellular activities. Bim contains a Bcl-2 homology domain 3 (BH3). It has been shown to interact with other members of the BCL-2 protein family, including BCL2, BCL2L1/BCL-X(L), and MCL1, and to act as an apoptotic activator. The expression of this gene can be induced by nerve growth factor (NGF), as well as by the forkhead transcription factor FKHR-L1, which suggests a role of this gene in neuronal and lymphocyte apoptosis. Transgenic studies of the mouse counterpart suggested that this gene functions as an essential initiator of apoptosis in thymocyte-negative selection.
Molecular Weight:	22171
Gene ID:	10018
NCBI Accession:	NP_001191035 , NP_001191036 , NP_001191037 , NP_001191038 , NP_001191039 , NP_001191040 , NP_001191041 , NP_001191042 , NP_006529 , NP_619527 , NP_619528 , NP_619529 , NP_619530 , NP_619531 , NP_61953
UniProt:	O43521
Pathways:	PI3K-Akt Signaling , Neurotrophin Signaling Pathway , Tube Formation , Positive Regulation of Endopeptidase Activity

Application Details

Application Notes:	WB: 1:1000. IHC-P: 1:50~100
Restrictions:	For Research Use only
Handling	
Format:	Liquid
Buffer:	Purified polyclonal antibody supplied in PBS with 0.09 % (W/V) sodium azide.
Preservative:	Sodium azide
Precaution of Use:	This product contains Sodium azide: a POISONOUS AND HAZARDOUS SUBSTANCE which should be handled by trained staff only.
Storage:	4 °C,-20 °C
Storage Comment:	Maintain refrigerated at 2-8 °C for up to 6 months. For long term storage store at -20 °C in small aliquots to prevent freeze-thaw cycles.

Handling

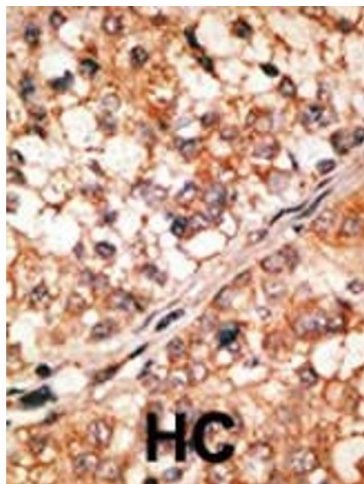
Expiry Date: 6 months

Publications

Product cited in: Jiao, Li, Zhang, Liu, Chi: "Role of Sirtuin3 in high glucose-induced apoptosis in renal tubular epithelial cells." in: **Biochemical and biophysical research communications**, Vol. 480, Issue 3, pp. 387-393, (2017) ([PubMed](#)).

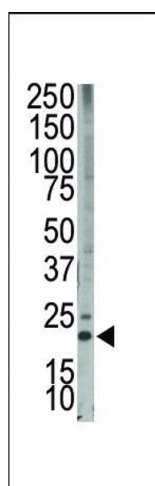
Del Gaizo Moore, Schlis, Sallan, Armstrong, Letai: "BCL-2 dependence and ABT-737 sensitivity in acute lymphoblastic leukemia." in: **Blood**, Vol. 111, Issue 4, pp. 2300-9, (2008) ([PubMed](#)).

Images



Immunohistochemistry (Paraffin-embedded Sections)

Image 1. Formalin-fixed and paraffin-embedded human cancer tissue reacted with the primary antibody, which was peroxidase-conjugated to the secondary antibody, followed by DAB staining. This data demonstrates the use of this antibody for immunohistochemistry, clinical relevance has not been evaluated. BC = breast carcinoma, HC = hepatocarcinoma.



Western Blotting

Image 2. The anti-Bim BH3 domain Pab (ABIN388101 and ABIN2846193) is used in Western blot to detect Bim BH3 in HL-60 cell lysate.