

Datasheet for ABIN388102
anti-BMF antibody (AA 115-150)

2 Images

[Go to Product page](#)

Overview

Quantity:	400 µL
Target:	BMF
Binding Specificity:	AA 115-150
Reactivity:	Human
Host:	Rabbit
Clonality:	Polyclonal
Conjugate:	This BMF antibody is un-conjugated
Application:	Western Blotting (WB), Immunohistochemistry (Paraffin-embedded Sections) (IHC (p))

Product Details

Immunogen:	This Bmf BH3 Domain antibody is generated from rabbits immunized with a KLH conjugated synthetic peptide between 115-150 amino acids from human Bmf BH3 Domain.
Clone:	RB00594
Isotype:	Ig Fraction
Predicted Reactivity:	M
Purification:	This antibody is prepared by Saturated Ammonium Sulfate (SAS) precipitation followed by dialysis against PBS.

Target Details

Target:	BMF
---------	-----

Target Details

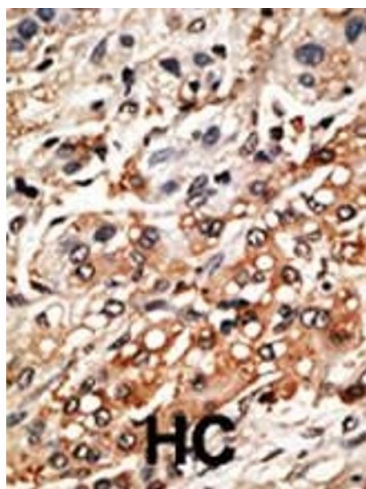
Alternative Name:	Bmf (BMF Products)
Background:	Bmf belongs to the BCL2 protein family. BCL2 family members form hetero- or homodimers and act as anti- or pro-apoptotic regulators that are involved in a wide variety of cellular activities. This protein contains a single BCL2 homology domain 3 (BH3), and has been shown to bind BCL2 proteins and function as an apoptotic activator. This protein is found to be sequestered to myosin V motors by its association with dynein light chain 2, which may be important for sensing intracellular damage and triggering apoptosis.
Molecular Weight:	20508
Gene ID:	90427
NCBI Accession:	NP_001003940 , NP_001003942 , NP_001003943 , NP_277038
UniProt:	Q96LC9

Application Details

Application Notes:	WB: 1:1000. IHC-P: 1:50~100
Restrictions:	For Research Use only

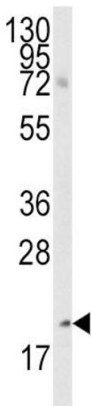
Handling

Format:	Liquid
Buffer:	Purified polyclonal antibody supplied in PBS with 0.09 % (W/V) sodium azide.
Preservative:	Sodium azide
Precaution of Use:	This product contains Sodium azide: a POISONOUS AND HAZARDOUS SUBSTANCE which should be handled by trained staff only.
Storage:	4 °C,-20 °C
Storage Comment:	Maintain refrigerated at 2-8 °C for up to 6 months. For long term storage store at -20 °C in small aliquots to prevent freeze-thaw cycles.
Expiry Date:	6 months



Immunohistochemistry (Paraffin-embedded Sections)

Image 1. Formalin-fixed and paraffin-embedded human cancer tissue reacted with the primary antibody, which was peroxidase-conjugated to the secondary antibody, followed by DAB staining. This data demonstrates the use of this antibody for immunohistochemistry, clinical relevance has not been evaluated. BC = breast carcinoma, HC = hepatocarcinoma.



Western Blotting

Image 2. Western blot analysis of anti-Bmf BH3 Domain Antibody (ABIN388102 and ABIN2846200) in cell line lysates (35 µg/lane). Bmf(arrow) was detected using the purified Pab.