

Datasheet for ABIN388105  
**anti-MCL-1 antibody (AA 191-226)**[3 Images](#)[4 Publications](#)[Go to Product page](#)

## Overview

Quantity:	400 µL
Target:	MCL-1 (MCL1)
Binding Specificity:	AA 191-226
Reactivity:	Human, Mouse, Rat
Host:	Rabbit
Clonality:	Polyclonal
Conjugate:	This MCL-1 antibody is un-conjugated
Application:	Western Blotting (WB), Flow Cytometry (FACS), Immunohistochemistry (Paraffin-embedded Sections) (IHC (p))

## Product Details

Immunogen:	This MCL1 antibody is generated from rabbits immunized with a KLH conjugated synthetic peptide between 191-226 amino acids from human MCL1.
Clone:	RB00961
Isotype:	Ig Fraction
Purification:	This antibody is purified through a protein A column, followed by peptide affinity purification.

## Target Details

Target:	MCL-1 (MCL1)
Alternative Name:	MCL1 ( <a href="#">MCL1 Products</a> )

## Target Details

Background:	The Mcl-1 protein belongs to the Bcl-2 family. Alternative splicing occurs at this locus and two transcript variants encoding distinct isoforms have been identified. The longer gene product (isoform 1) enhances cell survival by inhibiting apoptosis while the alternatively spliced shorter gene product (isoform 2) promotes apoptosis and is death-inducing.
Molecular Weight:	37337
Gene ID:	4170
NCBI Accession:	<a href="#">NP_001184249</a> , <a href="#">NP_068779</a> , <a href="#">NP_877495</a>
UniProt:	<a href="#">Q07820</a>
Pathways:	<a href="#">MAPK Signaling</a>

## Application Details

Application Notes:	WB: 1:2000. WB: 1:2000. IHC-P: 1:10~50. FC: 1:25
Restrictions:	For Research Use only

## Handling

Format:	Liquid
Buffer:	Purified polyclonal antibody supplied in PBS with 0.09 % (W/V) sodium azide.
Preservative:	Sodium azide
Precaution of Use:	This product contains Sodium azide: a POISONOUS AND HAZARDOUS SUBSTANCE which should be handled by trained staff only.
Storage:	4 °C,-20 °C
Storage Comment:	Maintain refrigerated at 2-8 °C for up to 6 months. For long term storage store at -20 °C in small aliquots to prevent freeze-thaw cycles.
Expiry Date:	6 months

## Publications

Product cited in:	Ma, He, Zhang, Fei, Niu, Wang, Ding, Xu, Chen, Zhu: "DNA methylation-regulated miR-193a-3p dictates resistance of hepatocellular carcinoma to 5-fluorouracil via repression of SRSF2 expression." in: <b>The Journal of biological chemistry</b> , Vol. 287, Issue 8, pp. 5639-49, (2012) ( <a href="#">PubMed</a> ).
-------------------	---

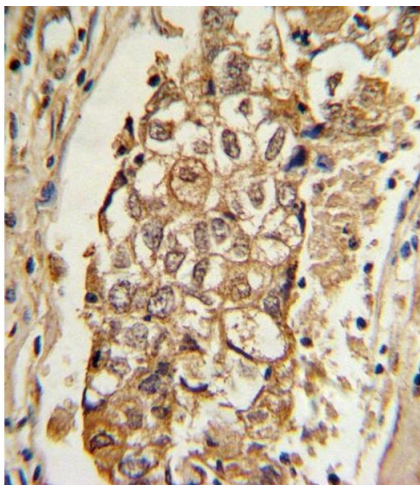
Tsang, Tang, Chan, Co, Au Yeung, Yau, Kong, Fung, Kwok: "P-glycoprotein enhances radiation-induced apoptotic cell death through the regulation of miR-16 and Bcl-2 expressions in hepatocellular carcinoma cells." in: **Apoptosis : an international journal on programmed cell death**, Vol. 16, Issue 5, pp. 524-35, (2011) ([PubMed](#)).

Johnson, Lucas, Muthusamy, Smith, Edwards, De Lay, Croce, Grever, Byrd: "Characterization of the TCL-1 transgenic mouse as a preclinical drug development tool for human chronic lymphocytic leukemia." in: **Blood**, Vol. 108, Issue 4, pp. 1334-8, (2006) ([PubMed](#)).

Yamane, Dylla, Muijtjens, Weissman: "Enforced Bcl-2 expression overrides serum and feeder cell requirements for mouse embryonic stem cell self-renewal." in: **Proceedings of the National Academy of Sciences of the United States of America**, Vol. 102, Issue 9, pp. 3312-7, (2005) ([PubMed](#)).

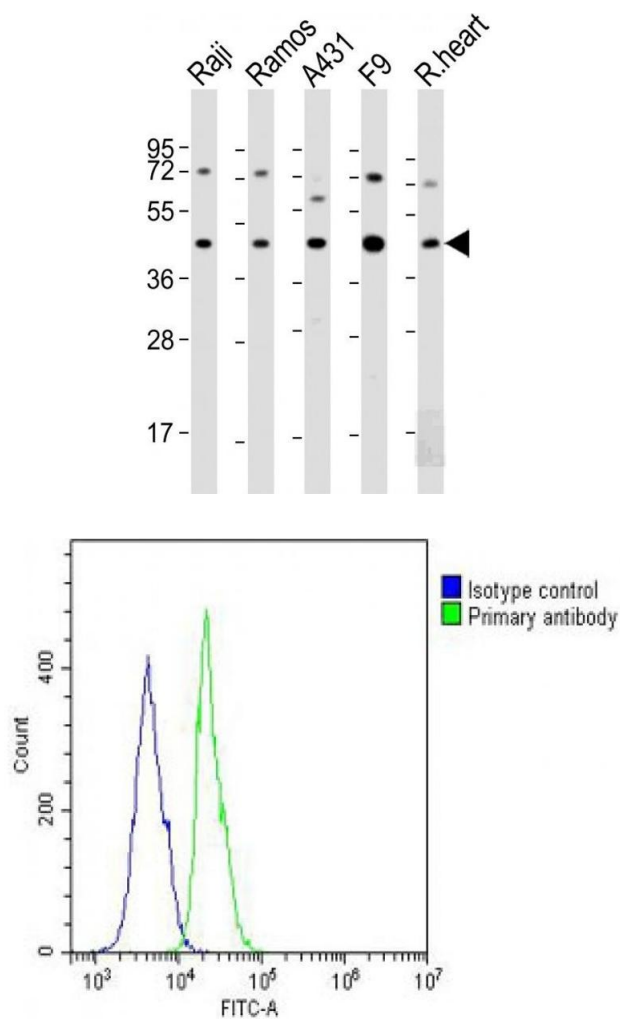
## Images

---



### Immunohistochemistry (Paraffin-embedded Sections)

**Image 1.** Formalin-fixed and paraffin-embedded human breast carcinoma with MCL1 Antibody (BH3 Domain Specific), which was peroxidase-conjugated to the secondary antibody, followed by DAB staining. This data demonstrates the use of this antibody for immunohistochemistry, clinical relevance has not been evaluated.



Western Blotting

**Image 2.** All lanes : Anti-MCL1 Antibody (BH3 Domain Specific) at 1:2000 dilution Lane 1: Raji whole cell lysate Lane 2: Ramos whole cell lysate Lane 3: A431 whole cell lysate Lane 4: F9 whole cell lysate Lane 5: A20 whole cell lysate Lysates/proteins at 20 µg per lane. Secondary Goat Anti-Rabbit IgG, (H+L), Peroxidase conjugated at 1/10000 dilution. Predicted band size : 37 kDa Blocking/Dilution buffer: 5 % NFDM/TBST.

Flow Cytometry

**Image 3.** Overlay histogram showing A431 cells stained with (ABIN388105 and ABIN2846220) (green line). The cells were fixed with 2 % paraformaldehyde (10 min) and then permeabilized with 90 % methanol for 10 min. The cells were then incubated in 2 % bovine serum albumin to block non-specific protein-protein interactions followed by the antibody ((ABIN388105 and ABIN2846220), 1:25 dilution) for 60 min at 37 °C. The secondary antibody used was Goat-Anti-Rabbit IgG, DyLight® 488 Conjugated Highly Cross-Adsorbed(OH191631) at 1/200 dilution for 40 min at 37 °C. Isotype control antibody (blue line) was rabbit IgG (1 µg/1x10<sup>6</sup> cells) used under the same conditions. Acquisition of >10,000 events was performed.