

Datasheet for ABIN388143  
**anti-APOBEC3G antibody (C-Term)**[Go to Product page](#)

## 2 Images

## Overview

Quantity:	400 µL
Target:	APOBEC3G
Binding Specificity:	AA 352-384, C-Term
Reactivity:	Human
Host:	Rabbit
Clonality:	Polyclonal
Conjugate:	This APOBEC3G antibody is un-conjugated
Application:	Western Blotting (WB), Immunohistochemistry (Paraffin-embedded Sections) (IHC (p))

## Product Details

Immunogen:	This APOBEC3G (CEM15) antibody is generated from rabbits immunized with a KLH conjugated synthetic peptide between 352-384 amino acids from the C-terminal region of human APOBEC3G (CEM15).
Clone:	RB01788
Isotype:	Ig Fraction
Purification:	This antibody is prepared by Saturated Ammonium Sulfate (SAS) precipitation followed by dialysis against PBS.

## Target Details

Target:	APOBEC3G
Alternative Name:	APOBEC3G (CEM15) ( <a href="#">APOBEC3G Products</a> )

## Target Details

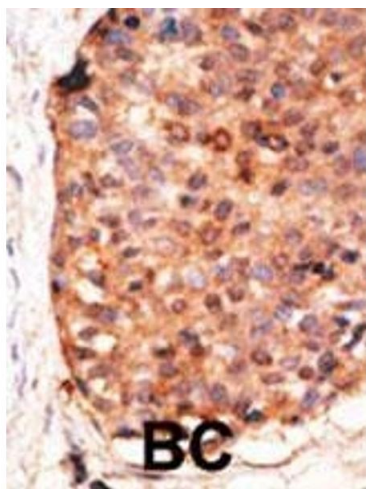
Background:	CEM15 is a member of the cytidine deaminase family. It is the product of one of seven related genes or pseudogenes found in a cluster, thought to result from gene duplication, on chromosome 22. Members of the cluster encode proteins that are structurally and functionally related to the C to U RNA-editing cytidine deaminase APOBEC1. It is thought that the proteins may be RNA editing enzymes and have roles in growth or cell cycle control. CEM15 has been found to be a specific inhibitor of human immunodeficiency virus-1 (HIV-1) infectivity.
Molecular Weight:	46408
Gene ID:	60489
NCBI Accession:	<a href="#">NP_068594</a>
UniProt:	<a href="#">Q9HC16</a>

## Application Details

Application Notes:	WB: 1:1000. IHC-P: 1:50~100
Restrictions:	For Research Use only

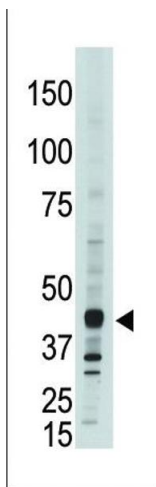
## Handling

Format:	Liquid
Buffer:	Purified polyclonal antibody supplied in PBS with 0.09 % (W/V) sodium azide.
Preservative:	Sodium azide
Precaution of Use:	This product contains Sodium azide: a POISONOUS AND HAZARDOUS SUBSTANCE which should be handled by trained staff only.
Storage:	4 °C, -20 °C
Storage Comment:	Maintain refrigerated at 2-8 °C for up to 6 months. For long term storage store at -20 °C in small aliquots to prevent freeze-thaw cycles.
Expiry Date:	6 months



**Immunohistochemistry (Paraffin-embedded Sections)**

**Image 1.** Formalin-fixed and paraffin-embedded human cancer tissue reacted with the primary antibody, which was peroxidase-conjugated to the secondary antibody, followed by DAB staining. This data demonstrates the use of this antibody for immunohistochemistry, clinical relevance has not been evaluated. BC = breast carcinoma, HC = hepatocarcinoma.



**Western Blotting**

**Image 2.** The anti-CEM15 Pab (ABIN388143 and ABIN2846473) is used in Western blot to detect CEM15 in cell lysate.