

Datasheet for ABIN388153
anti-GATA4 antibody (C-Term)[Go to Product page](#)

3 Images

Overview

Quantity:	400 µL
Target:	GATA4
Binding Specificity:	AA 298-328, C-Term
Reactivity:	Human
Host:	Rabbit
Clonality:	Polyclonal
Conjugate:	This GATA4 antibody is un-conjugated
Application:	Western Blotting (WB), Flow Cytometry (FACS)

Product Details

Immunogen:	This GATA4 antibody is generated from rabbits immunized with a KLH conjugated synthetic peptide between 298-328 amino acids from the C-terminal region of human GATA4.
Clone:	RB13444
Isotype:	Ig Fraction
Predicted Reactivity:	X, M, Rat
Purification:	This antibody is prepared by Saturated Ammonium Sulfate (SAS) precipitation followed by dialysis against PBS.

Target Details

Target:	GATA4
---------	-------

Target Details

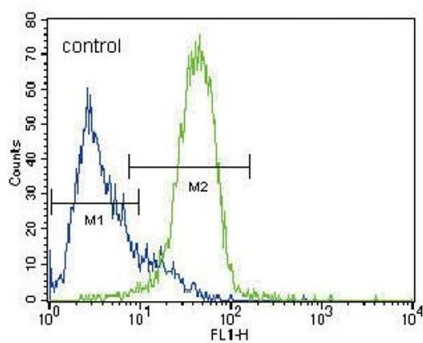
Alternative Name:	GATA4 (GATA4 Products)
Background:	GATA4 is a member of the GATA family of zinc-finger transcription factors. Members of this family recognize the GATA motif which is present in the promoters of many genes. This protein is thought to regulate genes involved in embryogenesis and in myocardial differentiation and function. Mutations in the gene encoding GATA4 have been associated with cardiac septal defects.
Molecular Weight:	44565
Gene ID:	2626
NCBI Accession:	NP_002043
UniProt:	P43694
Pathways:	Peptide Hormone Metabolism , Carbohydrate Homeostasis

Application Details

Application Notes:	WB: 1:1000. WB: 1:1000. FC: 1:10~50
Restrictions:	For Research Use only

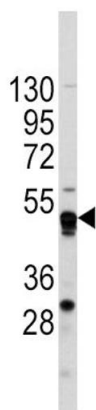
Handling

Format:	Liquid
Buffer:	Purified polyclonal antibody supplied in PBS with 0.09 % (W/V) sodium azide.
Preservative:	Sodium azide
Precaution of Use:	This product contains Sodium azide: a POISONOUS AND HAZARDOUS SUBSTANCE which should be handled by trained staff only.
Storage:	4 °C,-20 °C
Storage Comment:	Maintain refrigerated at 2-8 °C for up to 6 months. For long term storage store at -20 °C in small aliquots to prevent freeze-thaw cycles.
Expiry Date:	6 months



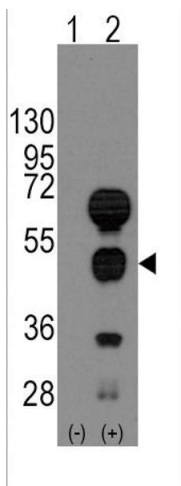
Flow Cytometry

Image 1. GATA4 Antibody (C-term) (ABIN388153 and ABIN2846917) flow cytometric analysis of HepG2 cells (right histogram) compared to a negative control cell (left histogram). FITC-conjugated goat-anti-rabbit secondary antibodies were used for the analysis.



Western Blotting

Image 2. Western blot analysis of anti-GATA4 Antibody (C-term) (ABIN388153 and ABIN2846917) in CEM cell line lysates (35 µg/lane). GATA4 (arrow) was detected using the purified Pab.



Western Blotting

Image 3. Western blot analysis of GATA4 (arrow) using rabbit polyclonal GATA4 Antibody (C-term) (ABIN388153 and ABIN2846917). 293 cell lysates (2 µg/lane) either nontransfected (Lane 1) or transiently transfected with the GATA4 gene (Lane 2) (Origene Technologies).