

Datasheet for ABIN388159

anti-Nanos Homolog 1 antibody (C-Term)

4 Images

[Go to Product page](#)

Overview

Quantity:	400 µL
Target:	Nanos Homolog 1 (NANOS1)
Binding Specificity:	AA 263-292, C-Term
Reactivity:	Human
Host:	Rabbit
Clonality:	Polyclonal
Conjugate:	This Nanos Homolog 1 antibody is un-conjugated
Application:	Western Blotting (WB), Immunofluorescence (IF), Immunohistochemistry (Paraffin-embedded Sections) (IHC (p)), Flow Cytometry (FACS)

Product Details

Immunogen:	This Nanos Homologue 1 (NANOS1) antibody is generated from rabbits immunized with a KLH conjugated synthetic peptide between 263-292 amino acids from the C-terminal region of human Nanos Homologue 1 (NANOS1).
Clone:	RB13839
Isotype:	Ig Fraction
Purification:	This antibody is prepared by Saturated Ammonium Sulfate (SAS) precipitation followed by dialysis against PBS.

Target Details

Target:	Nanos Homolog 1 (NANOS1)
---------	--------------------------

Target Details

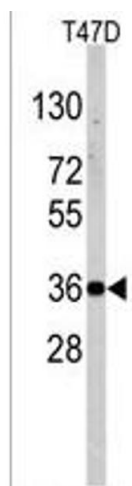
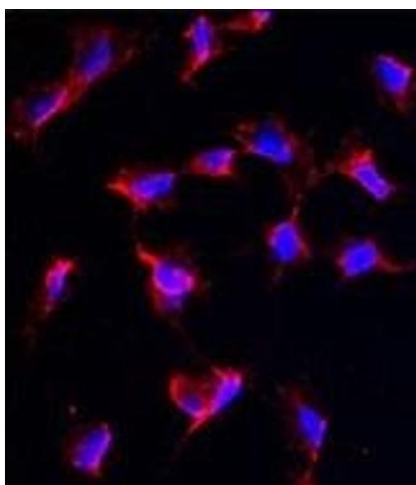
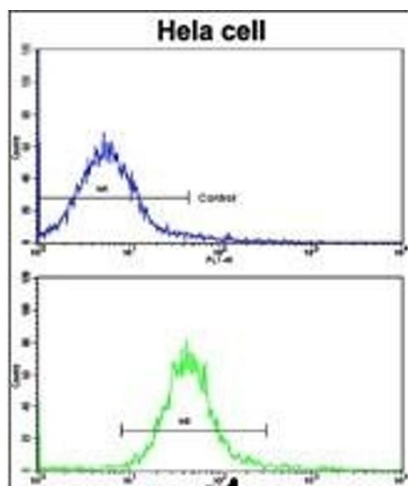
Alternative Name:	Nanos Homologue 1 (NANOS1) (NANOS1 Products)
Background:	NANOS1 may regulate translation of specific mRNAs by forming a complex with PUM2 that associates with the 3'-UTR of mRNA targets.
Molecular Weight:	30230
Gene ID:	340719
NCBI Accession:	NP_955631
UniProt:	Q8WY41
Pathways:	Negative Regulation of Hormone Secretion , Myometrial Relaxation and Contraction

Application Details

Application Notes:	IF: 1:10~50. WB: 1:1000. IHC-P: 1:10~50. FC: 1:10~50
Restrictions:	For Research Use only

Handling

Format:	Liquid
Buffer:	Purified polyclonal antibody supplied in PBS with 0.09 % (W/V) sodium azide.
Preservative:	Sodium azide
Precaution of Use:	This product contains Sodium azide: a POISONOUS AND HAZARDOUS SUBSTANCE which should be handled by trained staff only.
Storage:	4 °C,-20 °C
Storage Comment:	Maintain refrigerated at 2-8 °C for up to 6 months. For long term storage store at -20 °C in small aliquots to prevent freeze-thaw cycles.
Expiry Date:	6 months



Flow Cytometry

Image 1. Flow cytometric analysis of hela cells using Nanos Homologue 1 (NANOS1) Antibody (C-term)(bottom histogram) compared to a negative control cell (top histogram). FITC-conjugated goat-anti-rabbit secondary antibodies were used for the analysis.

Immunofluorescence

Image 2. Immunofluorescence analysis of anti-NANOS1 Antibody (C-term) in HeLa cells. 0.025 mg/mL primary antibody was followed by Alexa-Fluor-546-conjugated donkey anti-rabbit IgG (H+L). Alexa-Fluor-546 emits orange fluorescence. Blue counterstaining is DAPI.

Western Blotting

Image 3. Western blot analysis of anti-NANOS1 Antibody (C-term) (R) in T47D cell line lysates (35 µg/lane). NANOS1 (arrow) was detected using the purified Pab.

Please check the [product details page](#) for more images. Overall 4 images are available for ABIN388159.