

Datasheet for ABIN388430
anti-SIGLEC7 antibody (C-Term)[Go to Product page](#)

2 Images

Overview

Quantity:	400 µL
Target:	SIGLEC7
Binding Specificity:	AA 407-438, C-Term
Reactivity:	Human
Host:	Rabbit
Clonality:	Polyclonal
Conjugate:	This SIGLEC7 antibody is un-conjugated
Application:	Western Blotting (WB), Immunohistochemistry (Paraffin-embedded Sections) (IHC (p))

Product Details

Immunogen:	This SIGLEC7 (D-siglec) antibody is generated from rabbits immunized with a KLH conjugated synthetic peptide between 407-438 amino acids from the C-terminal region of human SIGLEC7 (D-siglec).
Clone:	RB2715
Isotype:	Ig Fraction
Purification:	This antibody is purified through a protein A column, followed by peptide affinity purification.

Target Details

Target:	SIGLEC7
Alternative Name:	SIGLEC7 (D-siglec) (SIGLEC7 Products)

Target Details

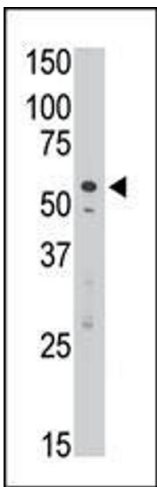
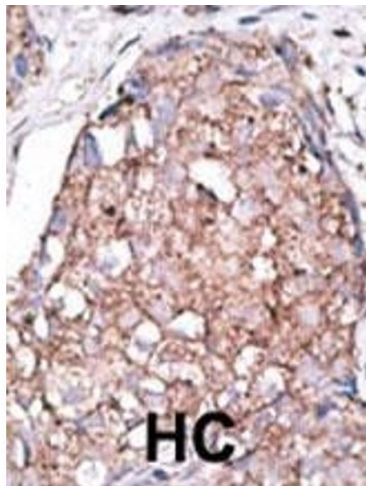
Background:	SIGLECs are cell surface proteins of the Ig superfamily. Most SIGLECs have 1 or more cytoplasmic immune receptor tyrosine-based inhibitory motifs, or ITIMs. A large subgroup of SIGLECs share high homology with SIGLEC3 (CD33) and are localized to 19q13.4. The cDNA for the SLG gene encodes 2 variants, SLG-long (SLGL) and SLG-short (SLGS). The 595-amino acid SLGL protein contains a signal peptide and 2 V-set N-terminal Ig-like domains. The 477-amino acid SLGS protein has a weak signal sequence and, like most SIGLEC3-like SIGLECs, has only 1 V-set N-terminal Ig-like domain. Both variants contain 2 C2-set N-terminal Ig-like domains, a transmembrane domain, and a cytoplasmic tail with a putative ITIM and a putative SLAM-like tyrosine-based motif. The conserved arginine residue thought to be essential for sialic acid binding in other SIGLECs is replaced by a glutamine in SLGS and by a cysteine in SLGL. RT-PCR analysis detected high expression of both variants in spleen and small intestine, and SLGS was highly expressed in adrenal gland and SLGL was highly expressed in bone marrow.
Molecular Weight:	51143
Gene ID:	27036
NCBI Accession:	NP_001264130 , NP_055200 , NP_057627
UniProt:	Q9Y286

Application Details

Application Notes:	WB: 1:1000. IHC-P: 1:50~100
Restrictions:	For Research Use only

Handling

Format:	Liquid
Buffer:	Purified polyclonal antibody supplied in PBS with 0.09 % (W/V) sodium azide.
Preservative:	Sodium azide
Precaution of Use:	This product contains Sodium azide: a POISONOUS AND HAZARDOUS SUBSTANCE which should be handled by trained staff only.
Storage:	4 °C, -20 °C
Storage Comment:	Maintain refrigerated at 2-8 °C for up to 6 months. For long term storage store at -20 °C in small aliquots to prevent freeze-thaw cycles.
Expiry Date:	6 months



Immunohistochemistry (Paraffin-embedded Sections)

Image 1. Formalin-fixed and paraffin-embedded human cancer tissue reacted with the primary antibody, which was peroxidase-conjugated to the secondary antibody, followed by AEC staining. This data demonstrates the use of this antibody for immunohistochemistry, clinical relevance has not been evaluated. BC = breast carcinoma, HC = hepatocarcinoma.

Western Blotting

Image 2. The anti-DSiglec C-term Pab (ABIN388430 and ABIN2837866) is used in Western blot to detect DSiglec in Jurkat cell lysate.