



[Go to Product page](#)

Datasheet for ABIN388443
anti-IL-27 antibody (AA 57-87)

3 Images

Overview

Quantity:	400 µL
Target:	IL-27 (IL27)
Binding Specificity:	AA 57-87
Reactivity:	Human, Mouse
Host:	Rabbit
Clonality:	Polyclonal
Conjugate:	This IL-27 antibody is un-conjugated
Application:	Western Blotting (WB), Flow Cytometry (FACS), Immunohistochemistry (Paraffin-embedded Sections) (IHC (p))

Product Details

Immunogen:	This IL-27 antibody is generated from rabbits immunized with a KLH conjugated synthetic peptide between 57-87 amino acids from the Central region of human IL-27.
Clone:	RB3263
Isotype:	Ig Fraction
Purification:	This antibody is prepared by Saturated Ammonium Sulfate (SAS) precipitation followed by dialysis against PBS.

Target Details

Target:	IL-27 (IL27)
Alternative Name:	IL-27 (IL27 Products)

Target Details

Background: IL-27 is a cytokine that shares the sequence similarity with IL17. The treatment of endothelial cells with this cytokine has been shown to stimulate the production of other cytokines including IL6, IL8 and CSF2/ GM-CSF. The increased expression of IL8 induced by this cytokine was found to be NF-kappa B-dependent.

Molecular Weight: 21893

Gene ID: 53342

NCBI Accession: [NP_612141](#)

UniProt: [Q8TAD2](#)

Application Details

Application Notes: WB: 1:1000. IHC-P: 1:10~50. FC: 1:10~50

Restrictions: For Research Use only

Handling

Format: Liquid

Buffer: Purified polyclonal antibody supplied in PBS with 0.09 % (W/V) sodium azide.

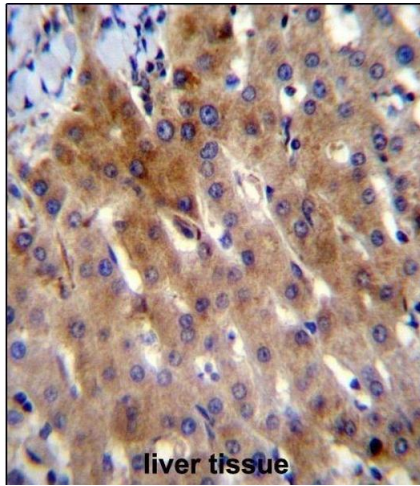
Preservative: Sodium azide

Precaution of Use: This product contains Sodium azide: a POISONOUS AND HAZARDOUS SUBSTANCE which should be handled by trained staff only.

Storage: 4 °C,-20 °C

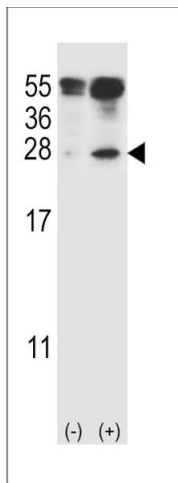
Storage Comment: Maintain refrigerated at 2-8 °C for up to 6 months. For long term storage store at -20 °C in small aliquots to prevent freeze-thaw cycles.

Expiry Date: 6 months



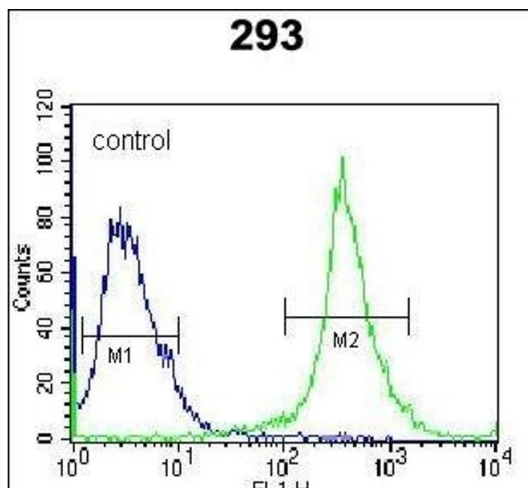
Immunohistochemistry (Paraffin-embedded Sections)

Image 1. IL-27 Antibody (Center) (ABIN388443 and ABIN2848726) immunohistochemistry analysis in formalin fixed and paraffin embedded human liver tissue followed by peroxidase conjugation of the secondary antibody and DAB staining. This data demonstrates the use of IL-27 Antibody (Center) for immunohistochemistry. Clinical relevance has not been evaluated.



Western Blotting

Image 2. Western blot analysis of IL27 (arrow) using rabbit polyclonal IL27 Antibody (C71) (ABIN388443 and ABIN2848726). 293 cell lysates (2 µg/lane) either nontransfected (Lane 1) or transiently transfected (Lane 2) with the IL27 gene.



Flow Cytometry

Image 3. IL-27 Antibody (Center) (ABIN388443 and ABIN2848726) flow cytometric analysis of 293 cells (right histogram) compared to a negative control cell (left histogram). FITC-conjugated goat-anti-rabbit secondary antibodies were used for the analysis.