



[Go to Product page](#)

Datasheet for ABIN388448

## anti-BMP10 antibody (N-Term)

### 2 Images

#### Overview

Quantity:	400 µL
Target:	BMP10
Binding Specificity:	AA 7-35, N-Term
Reactivity:	Human
Host:	Rabbit
Clonality:	Polyclonal
Conjugate:	This BMP10 antibody is un-conjugated
Application:	Western Blotting (WB), Immunohistochemistry (Paraffin-embedded Sections) (IHC (p))

#### Product Details

Immunogen:	This Bmp10 antibody is generated from rabbits immunized with a KLH conjugated synthetic peptide between 7-35 amino acids from the N-terminal region of human Bmp10.
Clone:	RB1867-1868
Isotype:	Ig Fraction
Purification:	This antibody is prepared by Saturated Ammonium Sulfate (SAS) precipitation followed by dialysis against PBS.

#### Target Details

Target:	BMP10
Alternative Name:	Bmp10 ( <a href="#">BMP10 Products</a> )

## Target Details

---

Background:	BMP10 is a member of the TGF-beta family of growth factors. Data suggest that the similar protein in mouse plays an important role in trabeculation of the embryonic heart. In human, this protein may signal through receptor serine/threonine kinases.
Molecular Weight:	48047
Gene ID:	27302
NCBI Accession:	<a href="#">NP_055297</a>
UniProt:	<a href="#">O95393</a>
Pathways:	<a href="#">Hormone Activity</a> , <a href="#">Regulation of Muscle Cell Differentiation</a>

## Application Details

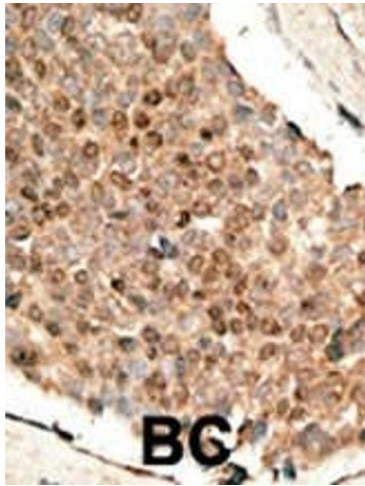
---

Application Notes:	WB: 1:1000. IHC-P: 1:50~100
Restrictions:	For Research Use only

## Handling

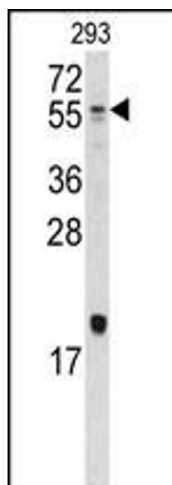
---

Format:	Liquid
Buffer:	Purified polyclonal antibody supplied in PBS with 0.09 % (W/V) sodium azide.
Preservative:	Sodium azide
Precaution of Use:	This product contains Sodium azide: a POISONOUS AND HAZARDOUS SUBSTANCE which should be handled by trained staff only.
Storage:	4 °C,-20 °C
Storage Comment:	Maintain refrigerated at 2-8 °C for up to 6 months. For long term storage store at -20 °C in small aliquots to prevent freeze-thaw cycles.
Expiry Date:	6 months



#### Immunohistochemistry (Paraffin-embedded Sections)

**Image 1.** Formalin-fixed and paraffin-embedded human cancer tissue reacted with the primary antibody, which was peroxidase-conjugated to the secondary antibody, followed by DAB staining. This data demonstrates the use of this antibody for immunohistochemistry, clinical relevance has not been evaluated. BC = breast carcinoma, HC = hepatocarcinoma.



#### Western Blotting

**Image 2.** Western blot analysis of anti-Bmp10 Antibody (N-term) (ABIN388448 and ABIN2848754) in 293 cell line lysates (35 µg/lane). Bmp10 (arrow) was detected using the purified Pab.