

Datasheet for ABIN388449  
**anti-BMP15 antibody (N-Term)**[Go to Product page](#)

## 1 Image

## Overview

Quantity:	400 µL
Target:	BMP15
Binding Specificity:	AA 4-33, N-Term
Reactivity:	Human
Host:	Rabbit
Clonality:	Polyclonal
Conjugate:	This BMP15 antibody is un-conjugated
Application:	Western Blotting (WB)

## Product Details

Immunogen:	This Bmp15 antibody is generated from rabbits immunized with a KLH conjugated synthetic peptide between 4-33 amino acids from the N-terminal region of human Bmp15.
Clone:	RB1869
Isotype:	Ig Fraction
Purification:	This antibody is prepared by Saturated Ammonium Sulfate (SAS) precipitation followed by dialysis against PBS.

## Target Details

Target:	BMP15
Alternative Name:	Bmp15 ( <a href="#">BMP15 Products</a> )

## Target Details

Background:	Bmp15 is a member of the bone morphogenetic protein family which is part of the transforming growth factor-beta superfamily. The transforming growth factor-beta superfamily includes large families of growth and differentiation factors. It is thought that this protein may be involved in oocyte maturation and follicular development as a homodimer or by forming heterodimers with a related protein, Gdf9.
-------------	---

Molecular Weight:	45055
-------------------	-------

Gene ID:	9210
----------	------

NCBI Accession:	<a href="#">NP_005439</a>
-----------------	---------------------------

UniProt:	<a href="#">O95972</a>
----------	------------------------

## Application Details

Application Notes:	WB: 1:1000
--------------------	------------

Restrictions:	For Research Use only
---------------	-----------------------

## Handling

Format:	Liquid
---------	--------

Buffer:	Purified polyclonal antibody supplied in PBS with 0.09 % (W/V) sodium azide.
---------	--

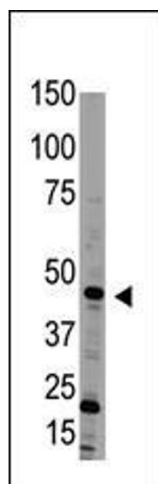
Preservative:	Sodium azide
---------------	--------------

Precaution of Use:	This product contains Sodium azide: a POISONOUS AND HAZARDOUS SUBSTANCE which should be handled by trained staff only.
--------------------	--

Storage:	4 °C,-20 °C
----------	-------------

Storage Comment:	Maintain refrigerated at 2-8 °C for up to 6 months. For long term storage store at -20 °C in small aliquots to prevent freeze-thaw cycles.
------------------	--

Expiry Date:	6 months
--------------	----------



#### Western Blotting

**Image 1.** Western blot analysis of anti-Bmp15 Antibody (N-term) (ABIN388449 and ABIN2848764) in HL60 cell line lysate (35 µg/lane). Bmp15 (arrow) was detected using the purified Pab.