

Datasheet for ABIN388456
anti-BMP6 antibody (N-Term)[Go to Product page](#)

2 Images

1 Publication

Overview

Quantity:	400 µL
Target:	BMP6
Binding Specificity:	AA 25-55, N-Term
Reactivity:	Human
Host:	Rabbit
Clonality:	Polyclonal
Conjugate:	This BMP6 antibody is un-conjugated
Application:	Western Blotting (WB), Immunohistochemistry (Paraffin-embedded Sections) (IHC (p))

Product Details

Immunogen:	This Bmp6 antibody is generated from rabbits immunized with a KLH conjugated synthetic peptide between 25-55 amino acids from the N-terminal region of human Bmp6.
Clone:	RB01862
Isotype:	Ig Fraction
Purification:	This antibody is prepared by Saturated Ammonium Sulfate (SAS) precipitation followed by dialysis against PBS.

Target Details

Target:	BMP6
Alternative Name:	Bmp6 (BMP6 Products)

Target Details

Background:	The bone morphogenetic proteins (BMPs) are a family of secreted signaling molecules that can induce ectopic bone growth. Many BMPs are part of the transforming growth factor-beta (TGFB) superfamily. BMPs were originally identified by an ability of demineralized bone extract to induce endochondral osteogenesis in vivo in an extraskeletal site. Based on its expression early in embryogenesis, Bmp6 has a proposed role in early development. In addition, the fact that BMP6 is closely related to BMP5 and BMP7 has lead to speculation of possible bone inductive activity.
Molecular Weight:	57226
Gene ID:	654
NCBI Accession:	NP_001709
UniProt:	P22004
Pathways:	Regulation of Hormone Metabolic Process , Regulation of Hormone Biosynthetic Process

Application Details

Application Notes:	WB: 1:1000. IHC-P: 1:10~50
Restrictions:	For Research Use only

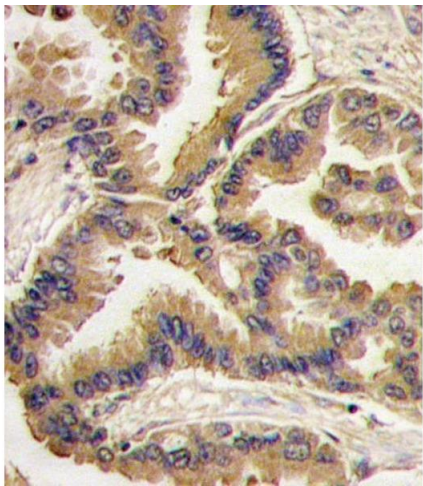
Handling

Format:	Liquid
Buffer:	Purified polyclonal antibody supplied in PBS with 0.09 % (W/V) sodium azide.
Preservative:	Sodium azide
Precaution of Use:	This product contains Sodium azide: a POISONOUS AND HAZARDOUS SUBSTANCE which should be handled by trained staff only.
Storage:	4 °C,-20 °C
Storage Comment:	Maintain refrigerated at 2-8 °C for up to 6 months. For long term storage store at -20 °C in small aliquots to prevent freeze-thaw cycles.
Expiry Date:	6 months

Publications

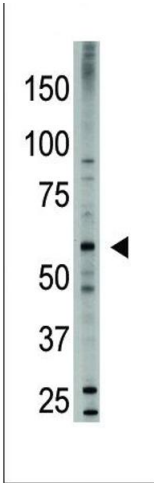
Product cited in:	Stegmaier, Wong, Ross, Chow, Peck, Wright, Lessnick, Kung, Golub: "Signature-based small
-------------------	--

molecule screening identifies cytosine arabinoside as an EWS/FLI modulator in Ewing sarcoma." in: **PLoS medicine**, Vol. 4, Issue 4, pp. e122, (2007) ([PubMed](#)).



Immunohistochemistry (Paraffin-embedded Sections)

Image 1. Formalin-fixed and paraffin-embedded human lung carcinoma tissue reacted with Bmp6 antibody (N-term) (ABIN388456 and ABIN2848818) , which was peroxidase-conjugated to the secondary antibody, followed by DAB staining. This data demonstrates the use of this antibody for immunohistochemistry, clinical relevance has not been evaluated.



Western Blotting

Image 2. The anti-Bmp6 (N-term) Pab (ABIN388456 and ABIN2848818) is used in Western blot to detect Bmp6 in HL60 cell lysate.