



[Go to Product page](#)

Datasheet for ABIN388457
anti-BMP7 antibody (N-Term)

3 Images

1 Publication

Overview

Quantity:	400 µL
Target:	BMP7
Binding Specificity:	AA 15-44, N-Term
Reactivity:	Human
Host:	Rabbit
Clonality:	Polyclonal
Conjugate:	This BMP7 antibody is un-conjugated
Application:	Western Blotting (WB), Immunofluorescence (IF), Immunohistochemistry (Paraffin-embedded Sections) (IHC (p))

Product Details

Immunogen:	This Bmp7 antibody is generated from rabbits immunized with a KLH conjugated synthetic peptide between 15-44 amino acids from the N-terminal region of human Bmp7.
Clone:	RB1863-1864
Isotype:	Ig Fraction
Predicted Reactivity:	M
Purification:	This antibody is prepared by Saturated Ammonium Sulfate (SAS) precipitation followed by dialysis against PBS.

Target Details

Target:	BMP7
---------	------

Target Details

Alternative Name:	Bmp7 (BMP7 Products)
Background:	The bone morphogenetic proteins (BMPs) are a family of secreted signaling molecules that can induce ectopic bone growth. Many BMPs are part of the transforming growth factor-beta (TGFB) superfamily. BMPs were originally identified by an ability of demineralized bone extract to induce endochondral osteogenesis in vivo in an extraskeletal site. Based on its expression early in embryogenesis, BMP7 has a proposed role in early development. In addition, the fact that BMP7 is closely related to BMP5 and BMP6 has lead to speculation of possible bone inductive activity.
Molecular Weight:	49313
Gene ID:	655
NCBI Accession:	NP_001710
UniProt:	P18075
Pathways:	Steroid Hormone Mediated Signaling Pathway , Stem Cell Maintenance

Application Details

Application Notes:	IF: 1:50~100. WB: 1:1000. IHC-P: 1:50~100
Restrictions:	For Research Use only

Handling

Format:	Liquid
Buffer:	Purified polyclonal antibody supplied in PBS with 0.09 % (W/V) sodium azide.
Preservative:	Sodium azide
Precaution of Use:	This product contains Sodium azide: a POISONOUS AND HAZARDOUS SUBSTANCE which should be handled by trained staff only.
Storage:	4 °C, -20 °C
Storage Comment:	Maintain refrigerated at 2-8 °C for up to 6 months. For long term storage store at -20 °C in small aliquots to prevent freeze-thaw cycles.
Expiry Date:	6 months

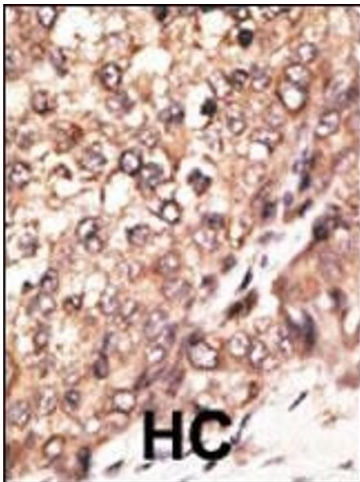
Product cited in:

Curioni-Fontecedro, Knights, Tinguely, Nuber, Schneider, Thomson, von Boehmer, Bossart, Pahlich, Gehring, Moch, Renner, Knuth, Zippelius: "MAGE-C1/CT7 is the dominant cancer-testis antigen targeted by humoral immune responses in patients with multiple myeloma." in: **Leukemia**, Vol. 22, Issue 8, pp. 1646-8, (2008) ([PubMed](#)).

Dubovsky, Albertini, McNeel: "MAD-CT-2 identified as a novel melanoma cancer-testis antigen using phage immunoblot analysis." in: **Journal of immunotherapy (Hagerstown, Md. : 1997)**, Vol. 30, Issue 7, pp. 675-83, (2007) ([PubMed](#)).

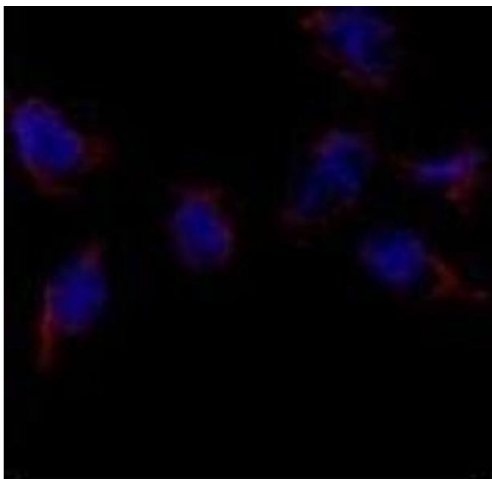
Kondo, Zhu, Asa, Ezzat: "The cancer/testis antigen melanoma-associated antigen-A3/A6 is a novel target of fibroblast growth factor receptor 2-IIIb through histone H3 modifications in thyroid cancer." in: **Clinical cancer research : an official journal of the American Association for Cancer Research**, Vol. 13, Issue 16, pp. 4713-20, (2007) ([PubMed](#)).

Images



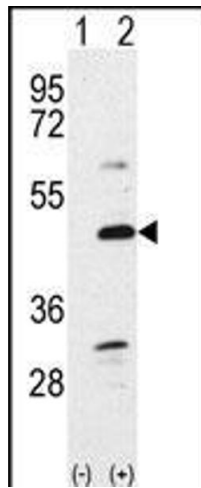
Immunohistochemistry (Paraffin-embedded Sections)

Image 1. Formalin-fixed and paraffin-embedded human cancer tissue reacted with the primary antibody, which was peroxidase-conjugated to the secondary antibody, followed by DAB staining. This data demonstrates the use of this antibody for immunohistochemistry, clinical relevance has not been evaluated. BC = breast carcinoma, HC = hepatocarcinoma.



Immunofluorescence

Image 2. Immunofluorescence analysis of Bmp7 Antibody (N-term) (ABIN388457 and ABIN2848828) in HeLa cells. 0.025 mg/mL primary antibody was followed by Alexa-Fluor-546-conjugated donkey anti-rabbit IgG (H+L). Alexa-Fluor-546 emits orange fluorescence. Blue counterstaining is DI.



Western Blotting

Image 3. Western blot analysis of Bmp7 (arrow) using rabbit polyclonal Bmp7 Antibody (N-term) (ABIN388457 and ABIN2848828). 293 cell lysates (2 µg/lane) either nontransfected (Lane 1) or transiently transfected with the Bmp7 gene (Lane 2) (Origene Technologies).