



[Go to Product page](#)

Datasheet for ABIN388461  
**anti-BMP2K antibody (AA 260-291)**

2 Images

Overview

Quantity:	400 µL
Target:	BMP2K
Binding Specificity:	AA 260-291
Reactivity:	Human, Mouse
Host:	Rabbit
Clonality:	Polyclonal
Conjugate:	This BMP2K antibody is un-conjugated
Application:	Western Blotting (WB), Immunohistochemistry (Paraffin-embedded Sections) (IHC (p))

Product Details

Immunogen:	This BIKE antibody is generated from rabbits immunized with a KLH conjugated synthetic peptide between 260-291 amino acids from the Central region of human BIKE.
Clone:	RB2058
Isotype:	Ig Fraction
Purification:	This antibody is prepared by Saturated Ammonium Sulfate (SAS) precipitation followed by dialysis against PBS.

Target Details

Target:	BMP2K
Alternative Name:	BIKE ( <a href="#">BMP2K Products</a> )

## Target Details

---

**Background:** BIKE is the human homolog of mouse BMP-2-inducible kinase. Bone morphogenic proteins (BMPs) play a key role in skeletal development and patterning. Expression of the mouse gene is increased during BMP-2 induced differentiation and the gene product is a putative serine/threonine protein kinase containing a nuclear localization signal. Therefore, the protein encoded by this human homolog is thought to be a protein kinase with a putative regulatory role in attenuating the program of osteoblast differentiation.

**Molecular Weight:** 129172

**Gene ID:** 55589

**NCBI Accession:** [NP\\_060063](#), [NP\\_942595](#)

**UniProt:** [Q9NSY1](#)

## Application Details

---

**Application Notes:** WB: 1:1000. IHC-P: 1:50~100

**Restrictions:** For Research Use only

## Handling

---

**Format:** Liquid

**Buffer:** Purified polyclonal antibody supplied in PBS with 0.09 % (W/V) sodium azide.

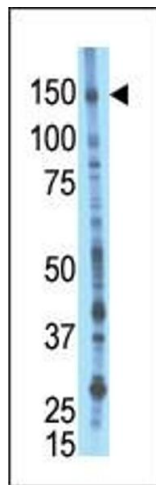
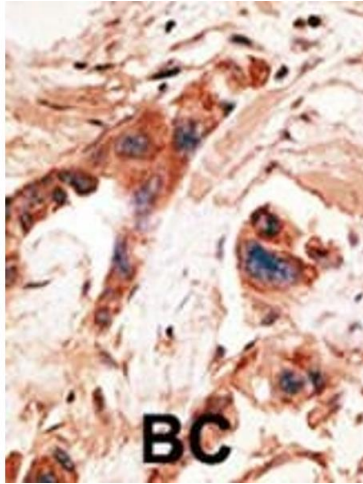
**Preservative:** Sodium azide

**Precaution of Use:** This product contains Sodium azide: a POISONOUS AND HAZARDOUS SUBSTANCE which should be handled by trained staff only.

**Storage:** 4 °C, -20 °C

**Storage Comment:** Maintain refrigerated at 2-8 °C for up to 6 months. For long term storage store at -20 °C in small aliquots to prevent freeze-thaw cycles.

**Expiry Date:** 6 months



### Immunohistochemistry (Paraffin-embedded Sections)

**Image 1.** Formalin-fixed and paraffin-embedded human cancer tissue reacted with the primary antibody, which was peroxidase-conjugated to the secondary antibody, followed by AEC staining. This data demonstrates the use of this antibody for immunohistochemistry, clinical relevance has not been evaluated. BC = breast carcinoma, HC = hepatocarcinoma.

### Western Blotting

**Image 2.** The anti-Bike C-term Pab (ABIN388461 and ABIN2848879) is used in Western blot to detect Bike in mouse liver tissue lysate.