

Datasheet for ABIN388474

anti-MAP1LC3A antibody (C-Term)

3 Images

12 Publications

[Go to Product page](#)

Overview

Quantity:	400 µL
Target:	MAP1LC3A
Binding Specificity:	AA 77-106, C-Term
Reactivity:	Human
Host:	Rabbit
Clonality:	Polyclonal
Conjugate:	This MAP1LC3A antibody is un-conjugated
Application:	Western Blotting (WB), Immunohistochemistry (Paraffin-embedded Sections) (IHC (p))

Product Details

Immunogen:	This LC3 antibody is generated from rabbits immunized with a KLH conjugated synthetic peptide between 77-106 amino acids from the C-terminal region of human LC3.
Clone:	RB7485
Isotype:	Ig Fraction
Purification:	This antibody is prepared by Saturated Ammonium Sulfate (SAS) precipitation followed by dialysis against PBS.

Target Details

Target:	MAP1LC3A
Alternative Name:	LC3 (MAP1LC3A Products)

Target Details

Background:	Macroautophagy is the major inducible pathway for the general turnover of cytoplasmic constituents in eukaryotic cells, it is also responsible for the degradation of active cytoplasmic enzymes and organelles during nutrient starvation. Macroautophagy involves the formation of double-membrane bound autophagosomes which enclose the cytoplasmic constituent targeted for degradation in a membrane bound structure, which then fuse with the lysosome (or vacuole) releasing a single-membrane bound autophagic bodies which are then degraded within the lysosome (or vacuole). MAP1A and MAP1B are microtubule-associated proteins which mediate the physical interactions between microtubules and components of the cytoskeleton. These proteins are involved in formation of autophagosomal vacuoles (autophagosomes). MAP1A and MAP1B each consist of a heavy chain subunit and multiple light chain subunits. MAP1LC3b is one of the light chain subunits and can associate with either MAP1A or MAP1B. The precursor molecule is cleaved by APG4B/ATG4B to form the cytosolic form, LC3-I. This is activated by APG7L/ATG7, transferred to ATG3 and conjugated to phospholipid to form the membrane-bound form, LC3-II.
Molecular Weight:	14688
Gene ID:	81631
NCBI Accession:	NP_073729
UniProt:	Q9GZQ8
Pathways:	Autophagy

Application Details

Application Notes:	WB: 1:1000. IHC-P: 1:50~100. IHC-P: 1:50~100
Restrictions:	For Research Use only

Handling

Format:	Liquid
Buffer:	Purified polyclonal antibody supplied in PBS with 0.09 % (W/V) sodium azide.
Preservative:	Sodium azide
Precaution of Use:	This product contains Sodium azide: a POISONOUS AND HAZARDOUS SUBSTANCE which should be handled by trained staff only.
Storage:	4 °C, -20 °C

Handling

Storage Comment: Maintain refrigerated at 2-8 °C for up to 6 months. For long term storage store at -20 °C in small aliquots to prevent freeze-thaw cycles.

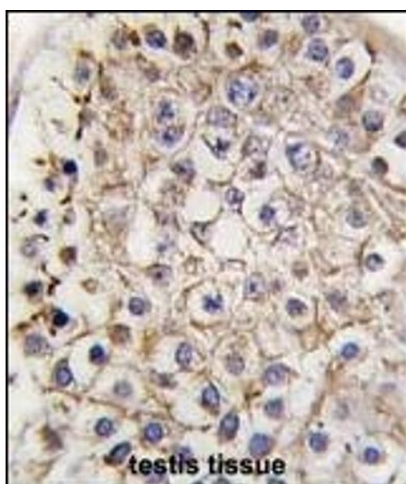
Expiry Date: 6 months

Publications

Product cited in: Hedlund, Karlsson, Osborn, Ludwig, Isacson: "Global gene expression profiling of somatic motor neuron populations with different vulnerability identify molecules and pathways of degeneration and protection." in: **Brain : a journal of neurology**, Vol. 133, Issue Pt 8, pp. 2313-30, (2010) ([PubMed](#)).

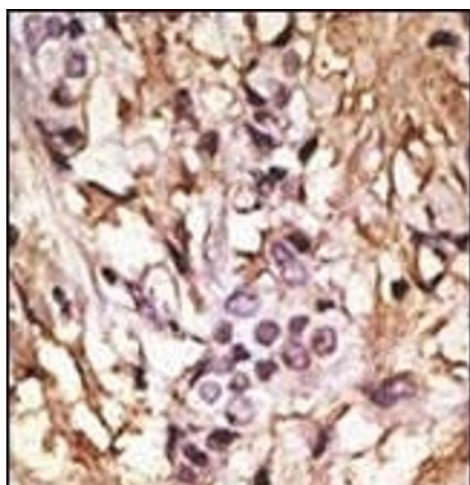
There are more publications referencing this product on: [Product page](#)

Images



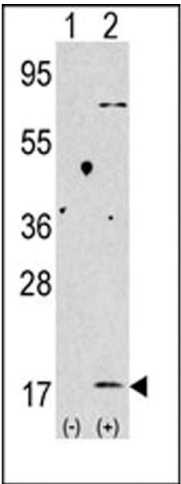
Immunohistochemistry (Paraffin-embedded Sections)

Image 1. Formalin-fixed and paraffin-embedded human testis tissue reacted with Autophagy LC3 antibody (G8b) (C-term) 1802b , which was peroxidase-conjugated to the secondary antibody, followed by DAB staining. This data demonstrates the use of this antibody for immunohistochemistry, clinical relevance has not been evaluated.



Immunohistochemistry (Paraffin-embedded Sections)

Image 2. Formalin-fixed and paraffin-embedded human cancer tissue reacted with the primary antibody, which was peroxidase-conjugated to the secondary antibody, followed by DAB staining. This data demonstrates the use of this antibody for immunohistochemistry, clinical relevance has not been evaluated. BC = breast carcinoma, HC = hepatocarcinoma.



Western Blotting

Image 3. Western blot analysis of anti-LC3 (G8b) Pab 1802b in 293 cell line lysates transiently transfected with the LC3 (G8b) gene (2 µg/lane). LC3 (G8b) (arrow) was detected using the purified Pab.