

Datasheet for ABIN388486
anti-ATG3 antibody (N-Term)



[Go to Product page](#)

1 Image

Overview

Quantity:	400 µL
Target:	ATG3
Binding Specificity:	AA 2-31, N-Term
Reactivity:	Human
Host:	Rabbit
Clonality:	Polyclonal
Conjugate:	This ATG3 antibody is un-conjugated
Application:	Western Blotting (WB)

Product Details

Immunogen:	This ATG3 antibody is generated from rabbits immunized with a KLH conjugated synthetic peptide between 2-31 amino acids from the N-terminal region of human ATG3.
Clone:	RB7456
Isotype:	Ig Fraction
Predicted Reactivity:	B, M, Rat, X
Purification:	This antibody is purified through a protein A column, followed by peptide affinity purification.

Target Details

Target:	ATG3
Alternative Name:	ATG3 (ATG3 Products)

Target Details

Background: Macroautophagy is the major inducible pathway for the general turnover of cytoplasmic constituents in eukaryotic cells, it is also responsible for the degradation of active cytoplasmic enzymes and organelles during nutrient starvation. Macroautophagy involves the formation of double-membrane bound autophagosomes which enclose the cytoplasmic constituent targeted for degradation in a membrane bound structure, which then fuse with the lysosome (or vacuole) releasing a single-membrane bound autophagic bodies which are then degraded within the lysosome (or vacuole). APG3L is an E2-like conjugating enzyme facilitating covalent binding of APG8 (MAP1LC3) to phosphatidylethanolamine (PE). APG7 (an E1-like enzyme) facilitates this reaction by forming an E1-E2 complex with APG3. Formation of the PE conjugate is essential for autophagy.

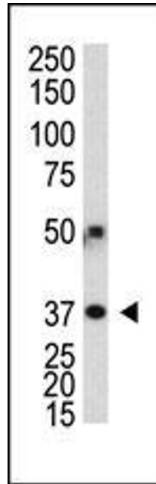
Molecular Weight:	35864
Gene ID:	64422
NCBI Accession:	NP_001265641 , NP_071933
UniProt:	Q9NT62
Pathways:	Autophagy

Application Details

Application Notes:	WB: 1:1000
Restrictions:	For Research Use only

Handling

Format:	Liquid
Buffer:	Purified polyclonal antibody supplied in PBS with 0.09 % (W/V) sodium azide.
Preservative:	Sodium azide
Precaution of Use:	This product contains Sodium azide: a POISONOUS AND HAZARDOUS SUBSTANCE which should be handled by trained staff only.
Storage:	4 °C,-20 °C
Storage Comment:	Maintain refrigerated at 2-8 °C for up to 6 months. For long term storage store at -20 °C in small aliquots to prevent freeze-thaw cycles.
Expiry Date:	6 months



Western Blotting

Image 1. Polyclonal antibody (ABIN388486 and ABIN2849574) was used in Western blot to detect human G3L in transfected 293 cells.