



Datasheet for ABIN388545  
**anti-Beclin 1 antibody (AA 181-210)**



[Go to Product page](#)

3 Images

5 Publications

## Overview

Quantity:	400 µL
Target:	Beclin 1 (BECN1)
Binding Specificity:	AA 181-210
Reactivity:	Human, Mouse
Host:	Rabbit
Clonality:	Polyclonal
Conjugate:	This Beclin 1 antibody is un-conjugated
Application:	Western Blotting (WB), Immunohistochemistry (Paraffin-embedded Sections) (IHC (p))

## Product Details

Immunogen:	This Beclin 1 antibody is generated from rabbits immunized with a KLH conjugated synthetic peptide between 181-210 amino acids from human Beclin 1.
Clone:	RB7461
Isotype:	Ig Fraction
Predicted Reactivity:	B, C
Purification:	This antibody is prepared by Saturated Ammonium Sulfate (SAS) precipitation followed by dialysis against PBS.

## Target Details

Target:	Beclin 1 (BECN1)
---------	------------------

## Target Details

---

Alternative Name: [Beclin 1 \(BECN1 Products\)](#)

Background: Macroautophagy is the major inducible pathway for the general turnover of cytoplasmic constituents in eukaryotic cells, it is also responsible for the degradation of active cytoplasmic enzymes and organelles during nutrient starvation. Macroautophagy involves the formation of double-membrane bound autophagosomes which enclose the cytoplasmic constituent targeted for degradation in a membrane bound structure, which then fuse with the lysosome (or vacuole) releasing a single-membrane bound autophagic bodies which are then degraded within the lysosome (or vacuole). Beclin 1 plays a role in two fundamentally important cell biological pathways: autophagy and apoptosis. Beclin 1 is thought to function as a VPS and autophagy protein as part of a complex with Class III PI3 kinase, Vps34.

Molecular Weight: 51896

Gene ID: 8678

NCBI Accession: [NP\\_003757](#)

UniProt: [Q14457](#)

Pathways: [Autophagy](#)

## Application Details

---

Application Notes: WB: 1:1000. WB: 1:1000. IHC-P: 1:50~100

Restrictions: For Research Use only

## Handling

---

Format: Liquid

Buffer: Purified polyclonal antibody supplied in PBS with 0.09 % (W/V) sodium azide.

Preservative: Sodium azide

Precaution of Use: This product contains Sodium azide: a POISONOUS AND HAZARDOUS SUBSTANCE which should be handled by trained staff only.

Storage: 4 °C,-20 °C

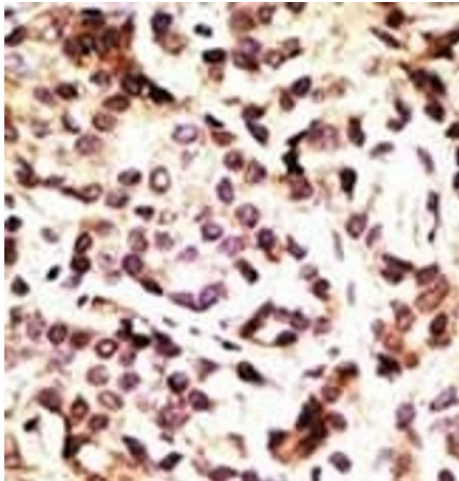
Storage Comment: Maintain refrigerated at 2-8 °C for up to 6 months. For long term storage store at -20 °C in small aliquots to prevent freeze-thaw cycles.

Expiry Date: 6 months

Product cited in:

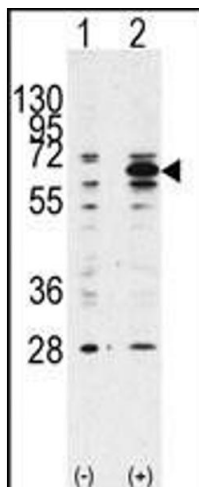
Stegmaier, Wong, Ross, Chow, Peck, Wright, Lessnick, Kung, Golub: "Signature-based small molecule screening identifies cytosine arabinoside as an EWS/FLI modulator in Ewing sarcoma." in: **PLoS medicine**, Vol. 4, Issue 4, pp. e122, (2007) ([PubMed](#)).

Images



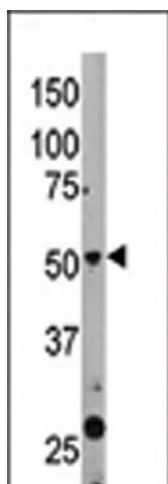
**Immunohistochemistry (Paraffin-embedded Sections)**

**Image 1.** Formalin-fixed and paraffin-embedded human cancer tissue reacted with the primary antibody, which was peroxidase-conjugated to the secondary antibody, followed by DAB staining. This data demonstrates the use of this antibody for immunohistochemistry, clinical relevance has not been evaluated. BC = breast carcinoma, HC = hepatocarcinoma.



**Western Blotting**

**Image 2.** Western blot analysis of anti-hBECN1- Pab (ABIN388545 and ABIN2849691) in 293 cell line lysates transiently transfected with the BECN1 gene (2 µg/lane). hBECN1-(arrow) was detected using the purified Pab.



**Western Blotting**

**Image 3.** The anti-BECN1 Pab (ABIN388545 and ABIN2849691) is used in Western blot to detect BECN1 in mouse liver tissue lysate. BECN1(arrow) was detected using the purified Pab.