

Datasheet for ABIN388566

**anti-LAMP1 antibody (N-Term)****2** Images**4** Publications[Go to Product page](#)

## Overview

Quantity:	400 µL
Target:	LAMP1
Binding Specificity:	AA 125-154, N-Term
Reactivity:	Human, Mouse
Host:	Rabbit
Clonality:	Polyclonal
Conjugate:	This LAMP1 antibody is un-conjugated
Application:	Western Blotting (WB), Immunohistochemistry (Paraffin-embedded Sections) (IHC (p))

## Product Details

Immunogen:	This LAMP1 antibody is generated from rabbits immunized with a KLH conjugated synthetic peptide between 125-154 amino acids from the N-terminal region of human LAMP1.
Clone:	RB12577
Isotype:	IgG
Purification:	This antibody is purified through a protein A column, followed by peptide affinity purification.

## Target Details

Target:	LAMP1
Alternative Name:	LAMP1 ( <a href="#">LAMP1 Products</a> )
Background:	LAMP1 is a member of a family of membrane glycoproteins. This glycoprotein provides

## Target Details

selectins with carbohydrate ligands. It may also play a role in tumor cell metastasis.

Molecular Weight: 44882

Gene ID: 3916

NCBI Accession: [NP\\_005552](#)

UniProt: [P11279](#)

Pathways: [Autophagy](#)

## Application Details

Application Notes: WB: 1:1000. IHC-P: 1:10~50

Restrictions: For Research Use only

## Handling

Format: Liquid

Buffer: Purified polyclonal antibody supplied in PBS with 0.09 % (W/V) sodium azide.

Preservative: Sodium azide

Precaution of Use: This product contains Sodium azide: a POISONOUS AND HAZARDOUS SUBSTANCE which should be handled by trained staff only.

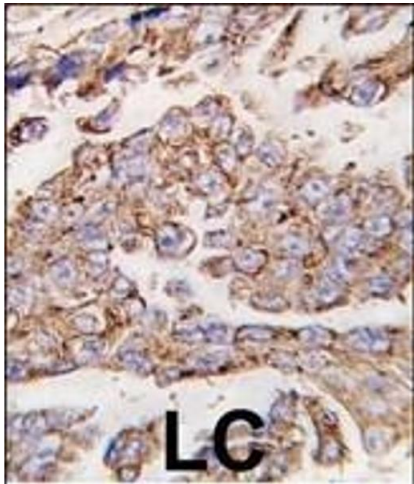
Storage: 4 °C,-20 °C

Storage Comment: Maintain refrigerated at 2-8 °C for up to 6 months. For long term storage store at -20 °C in small aliquots to prevent freeze-thaw cycles.

Expiry Date: 6 months

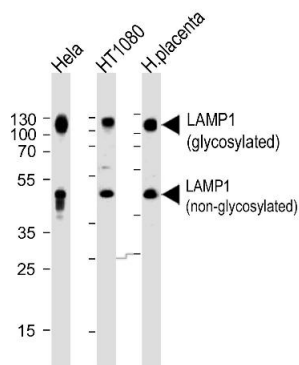
## Publications

Product cited in: Kevin Li-Chun, Schob, Zeller, Pulli, Ali, Wang, Chiou, Tsang, Lee, Stossel, Chen: "Gelsolin decreases actin toxicity and inflammation in murine multiple sclerosis." in: **Journal of neuroimmunology**, Vol. 287, pp. 36-42, (2015) ([PubMed](#)).



**Immunohistochemistry (Paraffin-embedded Sections)**

**Image 1.** Formalin-fixed and paraffin-embedded human lung carcinoma tissue reacted with \*LP1 antibody (N-term) (ABIN388566 and ABIN2849737) , which was peroxidase-conjugated to the secondary antibody, followed by DAB staining. This data demonstrates the use of this antibody for immunohistochemistry, clinical relevance has not been evaluated.



**Western Blotting**

**Image 2.** Western blot analysis of lysates from HeLa,H cell line and human placenta tissue (from left to right),using LP1 Antibody (N-term) (ABIN388566 and ABIN2849737). (ABIN388566 and ABIN2849737) was diluted at 1:1000 at each lane. A goat anti-rabbit IgG H&L(HRP) at 1:5000 dilution was used as the secondary antibody.Lysates at 35 µg per lane.