

Datasheet for ABIN388572  
**anti-AMBRA1 antibody (N-Term)**[Go to Product page](#)

## 2 Images

## Overview

Quantity:	400 µL
Target:	AMBRA1
Binding Specificity:	AA 27-55, N-Term
Reactivity:	Human
Host:	Rabbit
Clonality:	Polyclonal
Conjugate:	This AMBRA1 antibody is un-conjugated
Application:	Western Blotting (WB), Immunohistochemistry (Paraffin-embedded Sections) (IHC (p))

## Product Details

Immunogen:	This AMBRA1 antibody is generated from rabbits immunized with a KLH conjugated synthetic peptide between 27-55 amino acids from the N-terminal region of human AMBRA1.
Clone:	RB13139
Isotype:	Ig Fraction
Predicted Reactivity:	M
Purification:	This antibody is prepared by Saturated Ammonium Sulfate (SAS) precipitation followed by dialysis against PBS.

## Target Details

Target:	AMBRA1
---------	--------

## Target Details

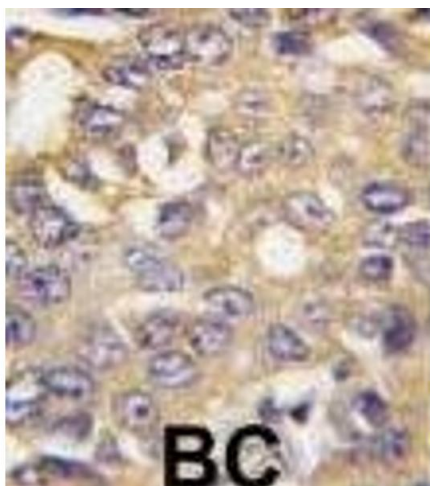
Alternative Name:	AMBRA1 ( <a href="#">AMBRA1 Products</a> )
Background:	AMBRA1 regulates autophagy and development of the nervous system. This protein is involved in autophagy in controlling protein turnover during neuronal development, and in regulating normal cell survival and proliferation.
Molecular Weight:	142507
Gene ID:	55626
NCBI Accession:	<a href="#">NP_001254711</a> , <a href="#">NP_001254712</a> , <a href="#">NP_060219</a>
UniProt:	<a href="#">Q9C0C7</a>
Pathways:	<a href="#">Autophagy</a>

## Application Details

Application Notes:	WB: 1:1000. IHC-P: 1:10~50
Restrictions:	For Research Use only

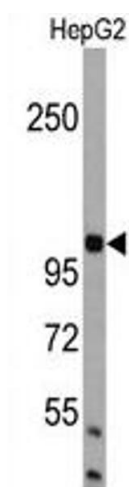
## Handling

Format:	Liquid
Buffer:	Purified polyclonal antibody supplied in PBS with 0.09 % (W/V) sodium azide.
Preservative:	Sodium azide
Precaution of Use:	This product contains Sodium azide: a POISONOUS AND HAZARDOUS SUBSTANCE which should be handled by trained staff only.
Storage:	4 °C, -20 °C
Storage Comment:	Maintain refrigerated at 2-8 °C for up to 6 months. For long term storage store at -20 °C in small aliquots to prevent freeze-thaw cycles.
Expiry Date:	6 months



#### Immunohistochemistry (Paraffin-embedded Sections)

**Image 1.** Formalin-fixed and paraffin-embedded human breast carcinoma tissue reacted with BRA1 antibody (N-term) (ABIN388572 and ABIN2849770), which was peroxidase-conjugated to the secondary antibody, followed by DAB staining. This data demonstrates the use of this antibody for immunohistochemistry, clinical relevance has not been evaluated.



#### Western Blotting

**Image 2.** Western blot analysis of BRA1 Antibody (N-term) in HepG2 cell line lysates (35 µg/lane). BRA1 (arrow) was detected using the purified Pab.