

Datasheet for ABIN388625
anti-NAP1L1 antibody (N-Term)[Go to Product page](#)

2 Images

2 Publications

Overview

Quantity:	400 µL
Target:	NAP1L1
Binding Specificity:	AA 1-30, N-Term
Reactivity:	Human
Host:	Rabbit
Clonality:	Polyclonal
Conjugate:	This NAP1L1 antibody is un-conjugated
Application:	Western Blotting (WB)

Product Details

Immunogen:	This NAP1L1 antibody is generated from rabbits immunized with a KLH conjugated synthetic peptide between 1-30 amino acids from the N-terminal region of human NAP1L1.
Clone:	RB8368
Isotype:	Ig Fraction
Predicted Reactivity:	B, M, Rat
Purification:	This antibody is prepared by Saturated Ammonium Sulfate (SAS) precipitation followed by dialysis against PBS.

Target Details

Target:	NAP1L1
---------	--------

Target Details

Alternative Name:	NAP1L1 (NAP1L1 Products)
Background:	NAP1L1 is a member of the nucleosome assembly protein (NAP) family. This protein participates in DNA replication and may play a role in modulating chromatin formation and contribute to the regulation of cell proliferation.
Molecular Weight:	45374
Gene ID:	4673
NCBI Accession:	NP_004528 , NP_631946
UniProt:	P55209

Application Details

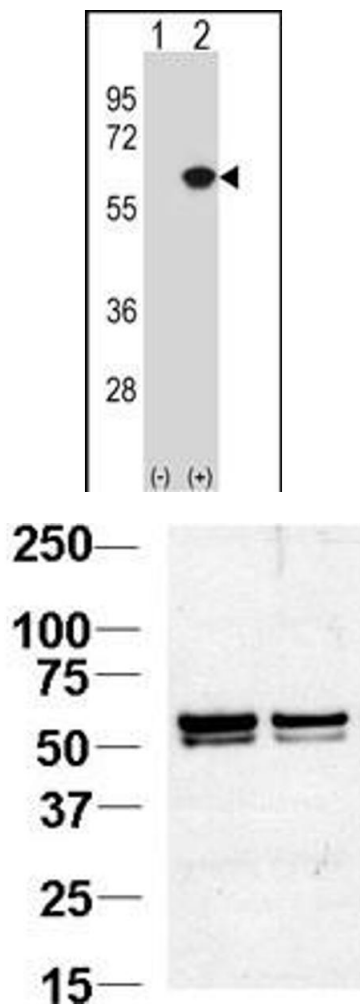
Application Notes:	WB: 1:1000. WB: 1:1000
Restrictions:	For Research Use only

Handling

Format:	Liquid
Buffer:	Purified polyclonal antibody supplied in PBS with 0.09 % (W/V) sodium azide.
Preservative:	Sodium azide
Precaution of Use:	This product contains Sodium azide: a POISONOUS AND HAZARDOUS SUBSTANCE which should be handled by trained staff only.
Storage:	4 °C,-20 °C
Storage Comment:	Maintain refrigerated at 2-8 °C for up to 6 months. For long term storage store at -20 °C in small aliquots to prevent freeze-thaw cycles.
Expiry Date:	6 months

Publications

Product cited in:	Hedlund, Karlsson, Osborn, Ludwig, Isacson: "Global gene expression profiling of somatic motor neuron populations with different vulnerability identify molecules and pathways of degeneration and protection." in: Brain : a journal of neurology , Vol. 133, Issue Pt 8, pp. 2313-30, (2010) (PubMed).
-------------------	---



Western Blotting

Image 1. Western blot analysis of NL1 (arrow) using rabbit polyclonal NL1 Antibody 920b. 293 cell lysates (2 µg/lane) either nontransfected (Lane 1) or transiently transfected (Lane 2) with the NL1 gene.

Western Blotting

Image 2. Western blot analysis of NL1 Antibody (N-term) 920b in Jurkat cell lysates. NL1 was detected using the purified Pab at 1:1000. Data courtesy of Guoqiang Xu, Cornell University.