

Datasheet for ABIN388637  
**anti-EIF2B3 antibody (C-Term)**[Go to Product page](#)

## 1 Image

## Overview

Quantity:	400 µL
Target:	EIF2B3
Binding Specificity:	AA 344-376, C-Term
Reactivity:	Human
Host:	Rabbit
Clonality:	Polyclonal
Conjugate:	This EIF2B3 antibody is un-conjugated
Application:	Western Blotting (WB)

## Product Details

Immunogen:	This EIF2B3 antibody is generated from rabbits immunized with a KLH conjugated synthetic peptide between 344-376 amino acids from the C-terminal region of human EIF2B3.
Clone:	RB8435
Isotype:	Ig Fraction
Predicted Reactivity:	Pr
Purification:	This antibody is prepared by Saturated Ammonium Sulfate (SAS) precipitation followed by dialysis against PBS.

## Target Details

Target:	EIF2B3
---------	--------

## Target Details

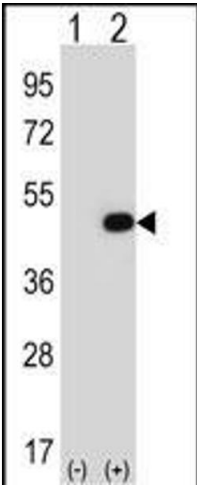
Alternative Name:	EIF2B3 ( <a href="#">EIF2B3 Products</a> )
Background:	EIF2B3 catalyzes the exchange of eukaryotic initiation factor 2-bound GDP for GTP. Mutations in each of the five subunits of translation initiation factor eIF2B, including subunit 3, can cause leukoencephalopathy with vanishing white matter. EIF2B3 has also been identified as a cofactor of hepatitis C virus internal ribosome entry site-mediated translation.
Molecular Weight:	50240
Gene ID:	8891
NCBI Accession:	<a href="#">NP_001160060</a> , <a href="#">NP_001248347</a> , <a href="#">NP_065098</a>
UniProt:	<a href="#">Q9NR50</a>

## Application Details

Application Notes:	WB: 1:1000
Restrictions:	For Research Use only

## Handling

Format:	Liquid
Buffer:	Purified polyclonal antibody supplied in PBS with 0.09 % (W/V) sodium azide.
Preservative:	Sodium azide
Precaution of Use:	This product contains Sodium azide: a POISONOUS AND HAZARDOUS SUBSTANCE which should be handled by trained staff only.
Storage:	4 °C,-20 °C
Storage Comment:	Maintain refrigerated at 2-8 °C for up to 6 months. For long term storage store at -20 °C in small aliquots to prevent freeze-thaw cycles.
Expiry Date:	6 months



Western Blotting

**Image 1.** Western blot analysis of EIF2B3 (arrow) using rabbit polyclonal EIF2B3 Antibody (ABIN388637 and ABIN2838310). 293 cell lysates (2 µg/lane) either nontransfected (Lane 1) or transiently transfected (Lane 2) with the EIF2B3 gene.