

Datasheet for ABIN388651
anti-RPL23A antibody (C-Term)[Go to Product page](#)

3 Images

2 Publications

Overview

Quantity:	400 µL
Target:	RPL23A
Binding Specificity:	AA 111-140, C-Term
Reactivity:	Human, Mouse, Rat
Host:	Rabbit
Clonality:	Polyclonal
Conjugate:	This RPL23A antibody is un-conjugated
Application:	Western Blotting (WB), Immunohistochemistry (Paraffin-embedded Sections) (IHC (p))

Product Details

Immunogen:	This RPL23A antibody is generated from rabbits immunized with a KLH conjugated synthetic peptide between 111-140 amino acids from the C-terminal region of human RPL23A.
Clone:	RB9668
Isotype:	Ig Fraction
Predicted Reactivity:	B
Purification:	This antibody is purified through a protein A column, followed by peptide affinity purification.

Target Details

Target:	RPL23A
Alternative Name:	RPL23A (RPL23A Products)

Target Details

Background: Ribosomes, the organelles that catalyze protein synthesis, consist of a small 40S subunit and a large 60S subunit. Together these subunits are composed of 4 RNA species and approximately 80 structurally distinct proteins. RPL23A is a ribosomal protein that is a component of the 60S subunit. The protein belongs to the L23P family of ribosomal proteins. It is located in the cytoplasm. The protein may be one of the target molecules involved in mediating growth inhibition by interferon. In yeast, the corresponding protein binds to a specific site on the 26S rRNA. This gene is co-transcribed with the U42A, U42B, U101A, and U101B small nucleolar RNA genes, which are located in its third, first, second, and fourth introns, respectively.

Molecular Weight: 17695

Gene ID: 6147

NCBI Accession: [NP_000975](#)

UniProt: [P62750](#)

Application Details

Application Notes: WB: 1:2000. IHC-P: 1:100. IHC-P: 1:100

Restrictions: For Research Use only

Handling

Format: Liquid

Buffer: Purified polyclonal antibody supplied in PBS with 0.09 % (W/V) sodium azide.

Preservative: Sodium azide

Precaution of Use: This product contains Sodium azide: a POISONOUS AND HAZARDOUS SUBSTANCE which should be handled by trained staff only.

Storage: 4 °C,-20 °C

Storage Comment: Maintain refrigerated at 2-8 °C for up to 6 months. For long term storage store at -20 °C in small aliquots to prevent freeze-thaw cycles.

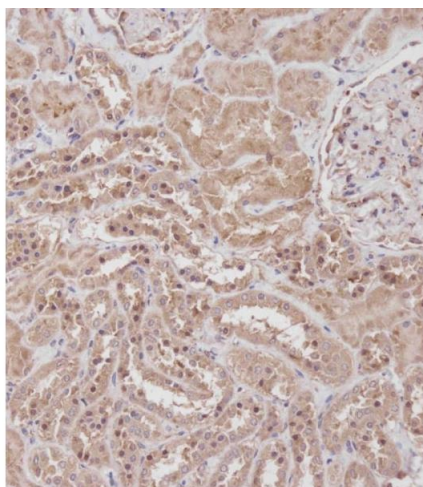
Expiry Date: 6 months

Publications

Product cited in: Wu, Li, Fang, Yi, Chen, Long, Gao, Wei, Chen: "Investigation of synergistic mechanism and identification of interaction site of aldose reductase with the combination of gigantol and

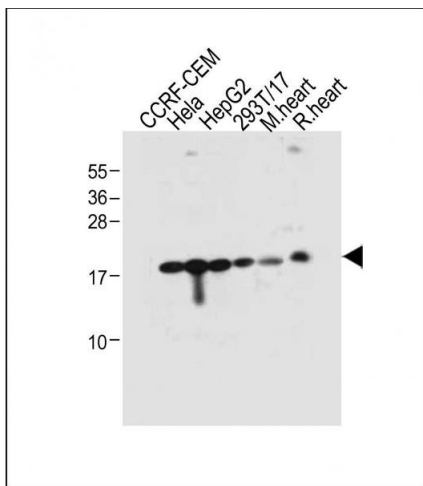
syringic acid for prevention of diabetic cataract." in: **BMC complementary and alternative medicine**, Vol. 16, Issue 1, pp. 286, (2017) ([PubMed](#)).

Guo, Wang, Liu, Myatt, Sun: "Induction of PGF2 γ synthesis by cortisol through GR dependent induction of CBR1 in human amnion fibroblasts." in: **Endocrinology**, Vol. 155, Issue 8, pp. 3017-24, (2014) ([PubMed](#)).



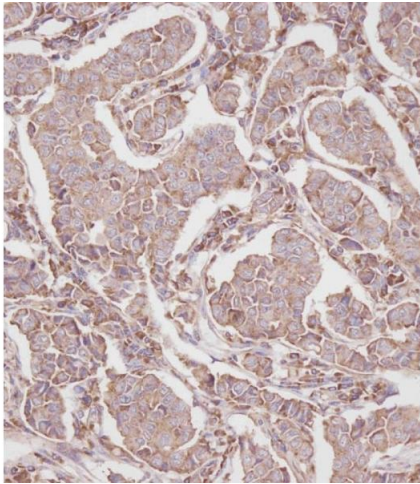
Immunohistochemistry (Paraffin-embedded Sections)

Image 1. Immunohistochemical analysis of B on paraffin-embedded Human kidney tissue. Tissue was fixed with formaldehyde at room temperature. Heat induced epitope retrieval was performed by EDTA buffer (pH 9. 0). Samples were incubated with primary Antibody (1:100) for 1 hour at room temperature. Undiluted CRF Anti-Polyvalent HRP Polymer antibody was used as the secondary antibody.



Western Blotting

Image 2. All lanes : Anti-RPL23A Antibody (C-term) at 1:2000 dilution Lane 1: CCRF-CEM whole cell lysate Lane 2: Hela whole cell lysate Lane 3: HepG2 whole cell lysate Lane 4: 293T/17 whole cell lysate Lane 5: Mouse heart tissue lysate Lane 6: Rat heart tissue lysate Lysates/proteins at 20 μ g per lane. Secondary Goat Anti-Rabbit IgG, (H+L), Peroxidase conjugated at 1/10000 dilution. Predicted band size : 18 kDa Blocking/Dilution buffer: 5 % NFDm/TBST.



Immunohistochemistry (Paraffin-embedded Sections)

Image 3. Immunohistochemical analysis of B on paraffin-embedded Human breast carcinoma tissue. Tissue was fixed with formaldehyde at room temperature. Heat induced epitope retrieval was performed by EDTA buffer (pH 9.0). Samples were incubated with primary Antibody (1:100) for 1 hour at room temperature. Undiluted CRF Anti-Polyvalent HRP Polymer antibody was used as the secondary antibody.