

Datasheet for ABIN388652
anti-RPL23A antibody (AA 44-73)[Go to Product page](#)

1 Image

Overview

Quantity:	400 µL
Target:	RPL23A
Binding Specificity:	AA 44-73
Reactivity:	Human, Mouse
Host:	Rabbit
Clonality:	Polyclonal
Conjugate:	This RPL23A antibody is un-conjugated
Application:	Western Blotting (WB)

Product Details

Immunogen:	This RPL23A antibody is generated from rabbits immunized with a KLH conjugated synthetic peptide between 44-73 amino acids from the Central region of human RPL23A.
Clone:	RB9359
Isotype:	Ig Fraction
Predicted Reactivity:	B, Rat
Purification:	This antibody is prepared by Saturated Ammonium Sulfate (SAS) precipitation followed by dialysis against PBS.

Target Details

Target:	RPL23A
---------	--------

Target Details

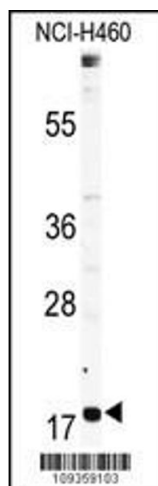
Alternative Name:	RPL23A (RPL23A Products)
Background:	Ribosomes, the organelles that catalyze protein synthesis, consist of a small 40S subunit and a large 60S subunit. Together these subunits are composed of 4 RNA species and approximately 80 structurally distinct proteins. RPL23A is a ribosomal protein that is a component of the 60S subunit. The protein belongs to the L23P family of ribosomal proteins. It is located in the cytoplasm. The protein may be one of the target molecules involved in mediating growth inhibition by interferon. In yeast, the corresponding protein binds to a specific site on the 26S rRNA. This gene is co-transcribed with the U42A, U42B, U101A, and U101B small nucleolar RNA genes, which are located in its third, first, second, and fourth introns, respectively.
Molecular Weight:	17695
Gene ID:	6147
NCBI Accession:	NP_000975
UniProt:	P62750

Application Details

Application Notes:	WB: 1:1000
Restrictions:	For Research Use only

Handling

Format:	Liquid
Buffer:	Purified polyclonal antibody supplied in PBS with 0.09 % (W/V) sodium azide.
Preservative:	Sodium azide
Precaution of Use:	This product contains Sodium azide: a POISONOUS AND HAZARDOUS SUBSTANCE which should be handled by trained staff only.
Storage:	4 °C, -20 °C
Storage Comment:	Maintain refrigerated at 2-8 °C for up to 6 months. For long term storage store at -20 °C in small aliquots to prevent freeze-thaw cycles.
Expiry Date:	6 months



Western Blotting

Image 1. Western blot analysis of anti-RPL23A Antibody (Center) (ABIN388652 and ABIN2838386) in NCI- cell line lysates (35 µg/lane). RPL23A(arrow) was detected using the purified Pab.