



[Go to Product page](#)

Datasheet for ABIN388654
anti-MRPL24 antibody (C-Term)

1 Image

Overview

Quantity:	400 µL
Target:	MRPL24
Binding Specificity:	AA 185-214, C-Term
Reactivity:	Human, Mouse
Host:	Rabbit
Clonality:	Polyclonal
Conjugate:	This MRPL24 antibody is un-conjugated
Application:	Western Blotting (WB)

Product Details

Immunogen:	This MRPL24 antibody is generated from rabbits immunized with a KLH conjugated synthetic peptide between 185-214 amino acids from the C-terminal region of human MRPL24.
Clone:	RB9670
Isotype:	Ig Fraction
Purification:	This antibody is prepared by Saturated Ammonium Sulfate (SAS) precipitation followed by dialysis against PBS.

Target Details

Target:	MRPL24
Alternative Name:	MRPL24 (MRPL24 Products)

Target Details

Background: Mammalian mitochondrial ribosomal proteins are encoded by nuclear genes and help in protein synthesis within the mitochondrion. Mitochondrial ribosomes (mitoribosomes) consist of a small 28S subunit and a large 39S subunit. They have an estimated 75 % protein to rRNA composition compared to prokaryotic ribosomes, where this ratio is reversed. Another difference between mammalian mitoribosomes and prokaryotic ribosomes is that the latter contain a 5S rRNA. Among different species, the proteins comprising the mitoribosome differ greatly in sequence, and sometimes in biochemical properties, which prevents easy recognition by sequence homology. MRPL24 is a 39S subunit protein which is more than twice the size of its E.coli counterpart (EcoL24).

Molecular Weight: 24915

Gene ID: 79590

NCBI Accession: [NP_078816](#), [NP_663781](#)

UniProt: [Q96A35](#)

Application Details

Application Notes: WB: 1:1000

Restrictions: For Research Use only

Handling

Format: Liquid

Buffer: Purified polyclonal antibody supplied in PBS with 0.09 % (W/V) sodium azide.

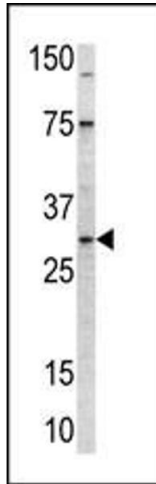
Preservative: Sodium azide

Precaution of Use: This product contains Sodium azide: a POISONOUS AND HAZARDOUS SUBSTANCE which should be handled by trained staff only.

Storage: 4 °C,-20 °C

Storage Comment: Maintain refrigerated at 2-8 °C for up to 6 months. For long term storage store at -20 °C in small aliquots to prevent freeze-thaw cycles.

Expiry Date: 6 months



Western Blotting

Image 1. Western blot analysis of anti-MRPL24 Pab (ABIN388654 and ABIN2838390) in mouse kidney tissue lysate (35 µg/lane). MRPL24 (arrow) was detected using the purified Pab.