

Datasheet for ABIN388670
anti-EIF4B antibody (AA 400-429)[Go to Product page](#)**2** Images

Overview

Quantity:	400 µL
Target:	EIF4B
Binding Specificity:	AA 400-429
Reactivity:	Human
Host:	Rabbit
Clonality:	Polyclonal
Conjugate:	This EIF4B antibody is un-conjugated
Application:	Western Blotting (WB), Immunohistochemistry (Paraffin-embedded Sections) (IHC (p))

Product Details

Immunogen:	This EIF4B antibody is generated from rabbits immunized with a KLH conjugated synthetic peptide between 400-429 amino acids from human EIF4B.
Clone:	RB13724
Isotype:	Ig Fraction
Purification:	This antibody is purified through a protein A column, followed by peptide affinity purification.

Target Details

Target:	EIF4B
Alternative Name:	EIF4B (EIF4B Products)
Background:	EIF4B is required for the binding of mRNA to ribosomes. It functions in close association with

Target Details

EIF4-F and EIF4-A by binding near the 5'- terminal cap of mRNA in presence of EIF-4F and ATP. It also promotes the ATPase activity and the ATP-dependent RNA unwinding activity of both EIF4-A and EIF4-F

Molecular Weight: 69151

Gene ID: 1975

NCBI Accession: [NP_001408](#)

UniProt: [P23588](#)

Application Details

Application Notes: WB: 1:1000. IHC-P: 1:10~50

Restrictions: For Research Use only

Handling

Format: Liquid

Buffer: Purified polyclonal antibody supplied in PBS with 0.09 % (W/V) sodium azide.

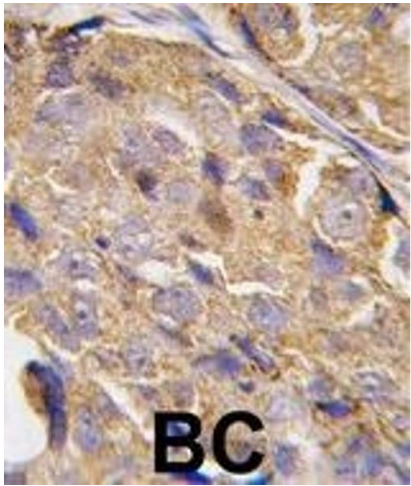
Preservative: Sodium azide

Precaution of Use: This product contains Sodium azide: a POISONOUS AND HAZARDOUS SUBSTANCE which should be handled by trained staff only.

Storage: 4 °C, -20 °C

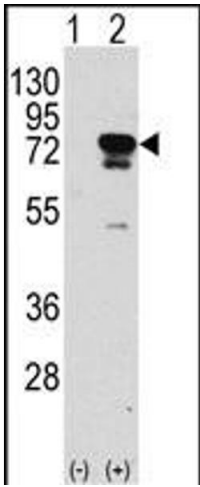
Storage Comment: Maintain refrigerated at 2-8 °C for up to 6 months. For long term storage store at -20 °C in small aliquots to prevent freeze-thaw cycles.

Expiry Date: 6 months



Immunohistochemistry (Paraffin-embedded Sections)

Image 1. Formalin-fixed and paraffin-embedded human breast carcinoma tissue reacted with EIF4B-, which was peroxidase-conjugated to the secondary antibody, followed by DAB staining. This data demonstrates the use of this antibody for immunohistochemistry, clinical relevance has not been evaluated.



Western Blotting

Image 2. Western blot analysis of EIF4B (arrow) using rabbit polyclonal EIF4B Antibody (R). 293 cell lysates (2 µg/lane) either nontransfected (Lane 1) or transiently transfected with the EIF4B gene (Lane 2) (Origene Technologies).