

Datasheet for ABIN388675  
**anti-EIF4E antibody (N-Term)**



[Go to Product page](#)

2 Images

## Overview

Quantity:	400 µL
Target:	EIF4E
Binding Specificity:	AA 32-61, N-Term
Reactivity:	Human
Host:	Rabbit
Clonality:	Polyclonal
Conjugate:	This EIF4E antibody is un-conjugated
Application:	Western Blotting (WB), Immunohistochemistry (Paraffin-embedded Sections) (IHC (p))

## Product Details

Immunogen:	This EIF4E antibody is generated from rabbits immunized with a KLH conjugated synthetic peptide between 32-61 amino acids from the N-terminal region of human EIF4E.
Clone:	RB11725
Isotype:	Ig Fraction
Predicted Reactivity:	Zf, B, M, Rb, Rat, X
Purification:	This antibody is prepared by Saturated Ammonium Sulfate (SAS) precipitation followed by dialysis against PBS.

## Target Details

Target:	EIF4E
---------	-------

## Target Details

---

Alternative Name:	<a href="#">EIF4E (EIF4E Products)</a>
Background:	EIF4F is a multi-subunit complex, the composition of which varies with external and internal environmental conditions. It is composed of at least EIF4A, EIF4E and EIF4G1/EIF4G3. EIF4E is also known to interact with other partners. The interaction with EIF4ENIF1 mediates the import into the nucleus. Nonphosphorylated EIF4EBP1, EIF4EBP2 and EIF4EBP3 compete with EIF4G1/EIF4G3 to interact with EIF4E, insulin stimulated MAP-kinase (MAPK1 and MAPK3) phosphorylation of EIF4EBP1 causes dissociation of the complex allowing EIF4G1/EIF4G3 to bind and consequent initiation of translation. Rapamycin can attenuate insulin stimulation, mediated by FKBP. this gene also interacts mutually exclusive with EIF4A1 and EIF4A2.
Molecular Weight:	25097
Gene ID:	1977
NCBI Accession:	<a href="#">NP_001124150</a> , <a href="#">NP_001124151</a> , <a href="#">NP_001959</a>
UniProt:	<a href="#">P06730</a>
Pathways:	<a href="#">BCR Signaling</a>

## Application Details

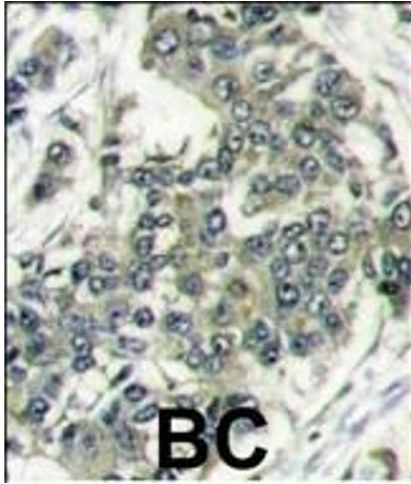
---

Application Notes:	WB: 1:1000. IHC-P: 1:50~100
Restrictions:	For Research Use only

## Handling

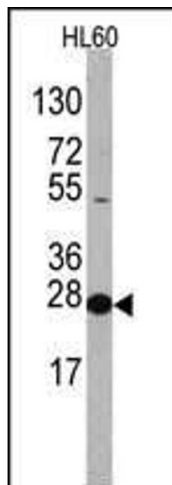
---

Format:	Liquid
Buffer:	Purified polyclonal antibody supplied in PBS with 0.09 % (W/V) sodium azide.
Preservative:	Sodium azide
Precaution of Use:	This product contains Sodium azide: a POISONOUS AND HAZARDOUS SUBSTANCE which should be handled by trained staff only.
Storage:	4 °C,-20 °C
Storage Comment:	Maintain refrigerated at 2-8 °C for up to 6 months. For long term storage store at -20 °C in small aliquots to prevent freeze-thaw cycles.
Expiry Date:	6 months



### Immunohistochemistry (Paraffin-embedded Sections)

**Image 1.** Formalin-fixed and paraffin-embedded human breast carcinoma reacted with EIF4E antibody (N-term) (ABIN388675 and ABIN2838633) , which was peroxidase-conjugated to the secondary antibody, followed by DAB staining. This data demonstrates the use of this antibody for immunohistochemistry, clinical relevance has not been evaluated.



### Western Blotting

**Image 2.** Western blot analysis of anti-EIF4E Antibody (N-term) Pab ((ABIN388675 and ABIN2838633)) in HL60 cell line lysates. EIF4E Antibody (N-term)(arrow) was detected using the purified Pab.