

Datasheet for ABIN388676

anti-EIF4E2 antibody (N-Term)[Go to Product page](#)**2** Images

Overview

Quantity:	400 µL
Target:	EIF4E2
Binding Specificity:	AA 12-41, N-Term
Reactivity:	Human
Host:	Rabbit
Clonality:	Polyclonal
Conjugate:	This EIF4E2 antibody is un-conjugated
Application:	Western Blotting (WB), Immunohistochemistry (Paraffin-embedded Sections) (IHC (p))

Product Details

Immunogen:	This EIF4E2 antibody is generated from rabbits immunized with a KLH conjugated synthetic peptide between 12-41 amino acids from the N-terminal region of human EIF4E2.
Clone:	RB11727
Isotype:	Ig Fraction
Purification:	This antibody is prepared by Saturated Ammonium Sulfate (SAS) precipitation followed by dialysis against PBS.

Target Details

Target:	EIF4E2
Alternative Name:	EIF4E2 (EIF4E2 Products)

Target Details

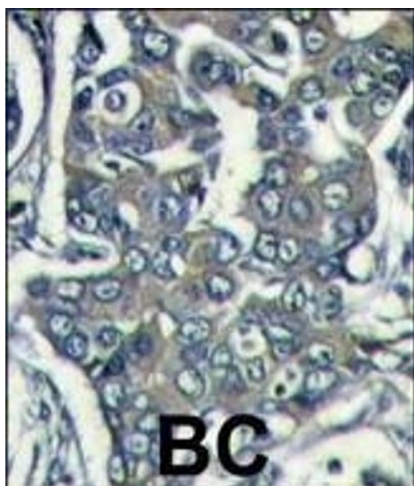
Background:	EIF4E2 is expressed exclusively in the cytoplasm. This protein recognizes and binds the 7 methylguanosine containing mRNA cap during an early step in the initiation of protein synthesis and facilitates ribosome binding by inducing the unwinding of the mRNAs secondary structures.
Molecular Weight:	28362
Gene ID:	9470
NCBI Accession:	NP_004837
UniProt:	O60573
Pathways:	SARS-CoV-2 Protein Interactome

Application Details

Application Notes:	WB: 1:1000. IHC-P: 1:50~100
Restrictions:	For Research Use only

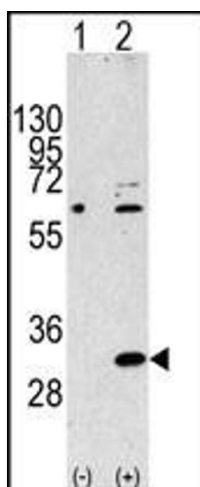
Handling

Format:	Liquid
Buffer:	Purified polyclonal antibody supplied in PBS with 0.09 % (W/V) sodium azide.
Preservative:	Sodium azide
Precaution of Use:	This product contains Sodium azide: a POISONOUS AND HAZARDOUS SUBSTANCE which should be handled by trained staff only.
Storage:	4 °C,-20 °C
Storage Comment:	Maintain refrigerated at 2-8 °C for up to 6 months. For long term storage store at -20 °C in small aliquots to prevent freeze-thaw cycles.
Expiry Date:	6 months



Immunohistochemistry (Paraffin-embedded Sections)

Image 1. Formalin-fixed and paraffin-embedded human breast carcinoma reacted with EIF4E2 Antibody (N-term) (ABIN388676 and ABIN2838643), which was peroxidase-conjugated to the secondary antibody, followed by DAB staining. This data demonstrates the use of this antibody for immunohistochemistry, clinical relevance has not been evaluated.



Western Blotting

Image 2. Western blot analysis of EIF4E2 Antibody (N-term) polyclonal antibody (ABIN388676 and ABIN2838643) (arrow). 293 cell lysates (2 µg/lane) either nontransfected (Lane 1) or transiently transfected with the EIF4E2 gene (Lane 2) (Origene Technologies).