

Datasheet for ABIN388684
anti-URI1 antibody (C-Term)[Go to Product page](#)

1 Image

Overview

Quantity:	400 µL
Target:	URI1
Binding Specificity:	AA 347-376, C-Term
Reactivity:	Human
Host:	Rabbit
Clonality:	Polyclonal
Conjugate:	This URI1 antibody is un-conjugated
Application:	Western Blotting (WB)

Product Details

Immunogen:	This RMP (URI) antibody is generated from rabbits immunized with a KLH conjugated synthetic peptide between 347-376 amino acids from the C-terminal region of human RMP (URI).
Clone:	RB9809
Isotype:	Ig Fraction
Purification:	This antibody is prepared by Saturated Ammonium Sulfate (SAS) precipitation followed by dialysis against PBS.

Target Details

Target:	URI1
Alternative Name:	RMP (URI) (URI1 Products)

Target Details

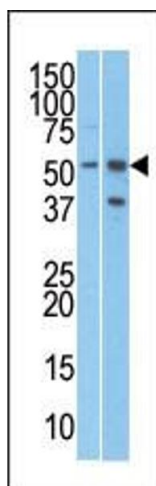
Background:	The protein encoded by this gene binds to RNA polymerase II subunit 5 (RPB5) and negatively modulates transcription through its binding to RPB5. The encoded protein seems to have inhibitory effects on various types of activated transcription, but it requires the RPB5-binding region. This protein acts as a corepressor. It is suggested that it may require signaling processes for its function or that it negatively modulates genes in the chromatin structure. Two alternatively spliced transcript variants encoding different isoforms have been described for this gene.
Molecular Weight:	59832
Gene ID:	8725
NCBI Accession:	NP_001239570 , NP_003787
UniProt:	O94763

Application Details

Application Notes:	WB: 1:1000
Restrictions:	For Research Use only

Handling

Format:	Liquid
Buffer:	Purified polyclonal antibody supplied in PBS with 0.09 % (W/V) sodium azide.
Preservative:	Sodium azide
Precaution of Use:	This product contains Sodium azide: a POISONOUS AND HAZARDOUS SUBSTANCE which should be handled by trained staff only.
Storage:	4 °C,-20 °C
Storage Comment:	Maintain refrigerated at 2-8 °C for up to 6 months. For long term storage store at -20 °C in small aliquots to prevent freeze-thaw cycles.
Expiry Date:	6 months



Western Blotting

Image 1. The anti-R Pab (ABIN388684 and ABIN2838672) is used in Western blot to detect R in T47D (left) and Jurkat (right) cell line lysates.